

Heavy Rainfall & Possible Flooding

Decision Support Briefing **#3**

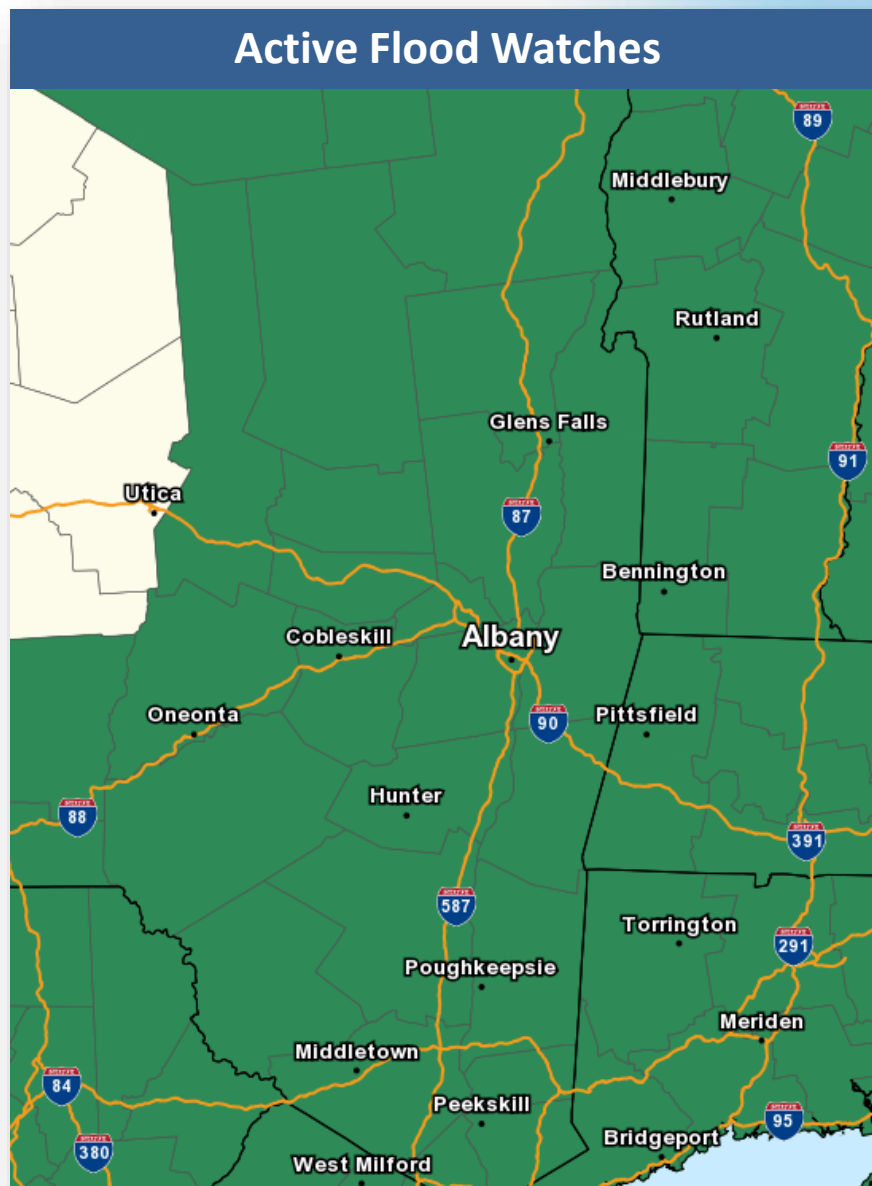
As of: 5:30 AM

Friday, April 19, 2019





What Has Changed?

✓ None



Main Points

Hazard	Impacts	Location	Timing
River Flooding 	<p>Moderate to heavy rainfall on nearly saturated ground with already elevated water levels will result in significant river rises and possible flooding.</p>	<p>Mohawk, Sacandaga, Schroon, Black, Upper Hudson and Hoosic River Basins in eastern New York, and the Deerfield, West River and Housatonic River Basins in western New England</p>	<p>Tonight through Sunday</p>
Flooding 	<p>Urban, low lying and poor drainage flooding is possible. Isolated flash flooding cannot be ruled out.</p>	<p>All of eastern New York and western New England, especially the Catskills, Capital Region & mid Hudson Valley</p>	<p>This evening through Saturday afternoon</p>

River Observations and Forecasts

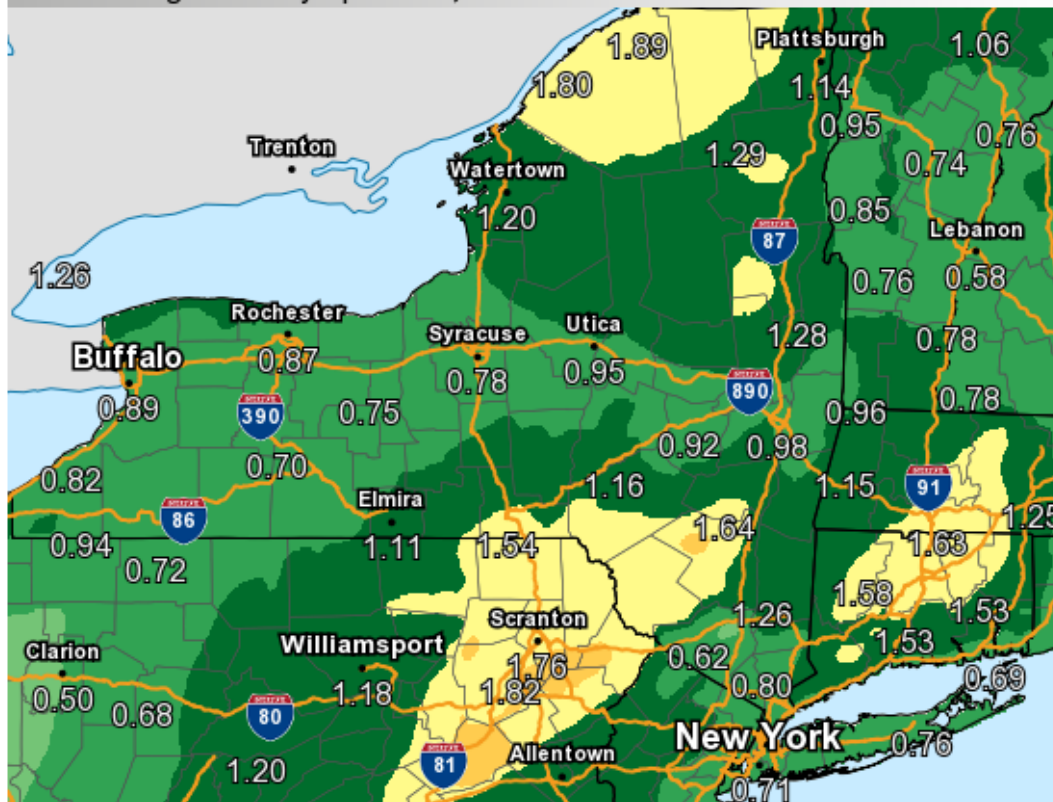
<https://water.weather.gov/ahps2/index.php?wfo=aly>

Forecast Precipitation

National Weather Service

Valid Ending Saturday April 20th, 2019 at 8 PM EDT

- Up to 0.1 inch
- 0.1 to 0.25 inches
- 0.25 to 0.5 inches
- 0.5 to 1.0 inches
- 1.0 to 1.5 inches
- 1.5 to 2.0 inches
- 2.0 to 3.0 inches
- 3.0 to 4.0 inches
- 4.0 to 6.0 inches
- 6.0 to 8.0 inches
- 8.0 to 10.0 inches
- 10.0 to 15.0 inches
- 15.0 to 20.0 inches
- 20.0 to 30.0 inches
- 30.0 to 50.0 inches



**Forecast
Rainfall
Amounts:
Today Through
Saturday**



Graphic Created
April 19th, 2019
5:02 AM EDT

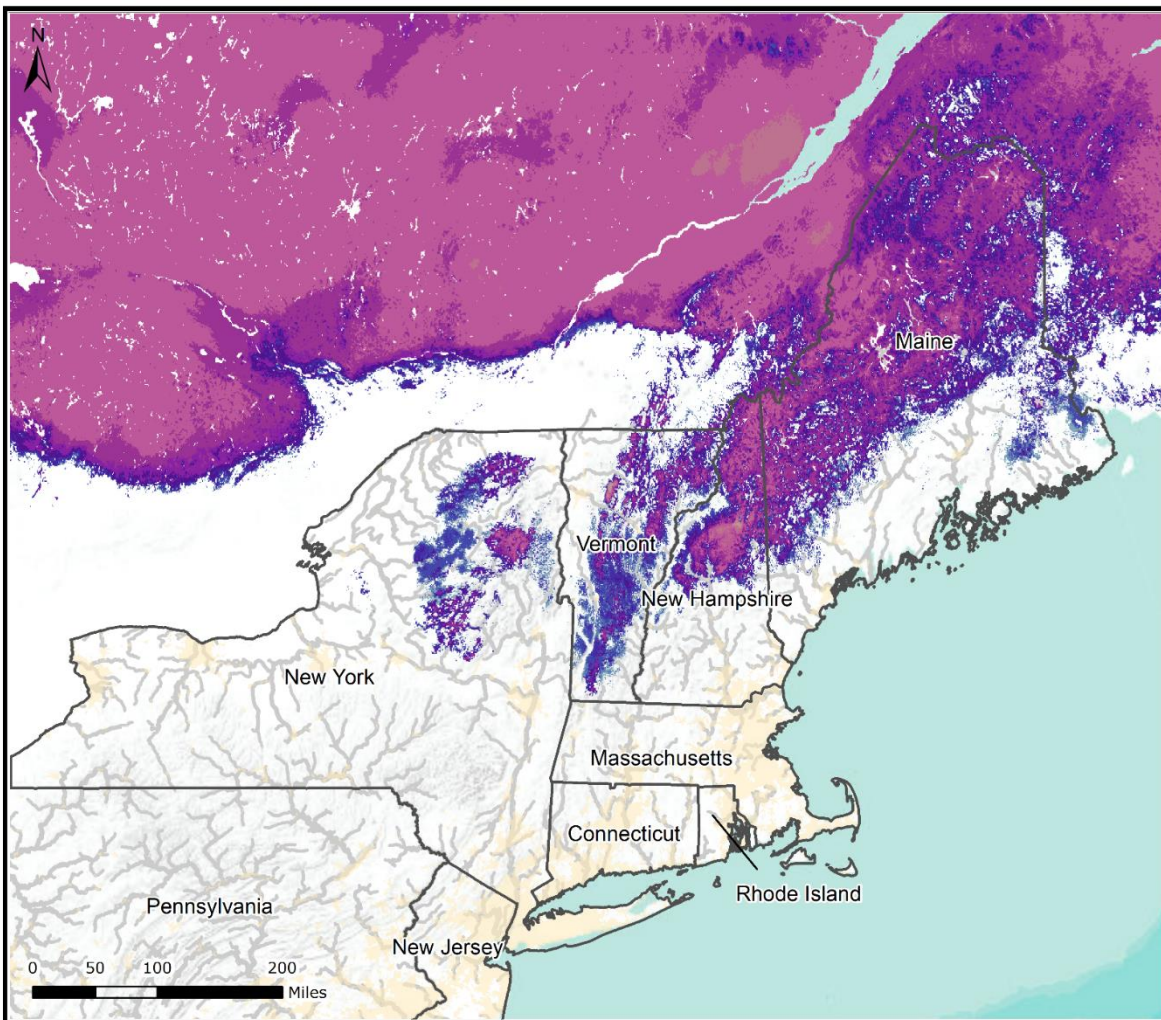




**SNODAS Snow Water Equivalent
For the NERFC Domain**

National SWE Valid 04/18/2019 06:00Z

NWC | NATIONAL WATER CENTER



Snow Water Equivalent

Image (inches)



Areas marked on this map still contain a hydrologic significant snowpack in place.

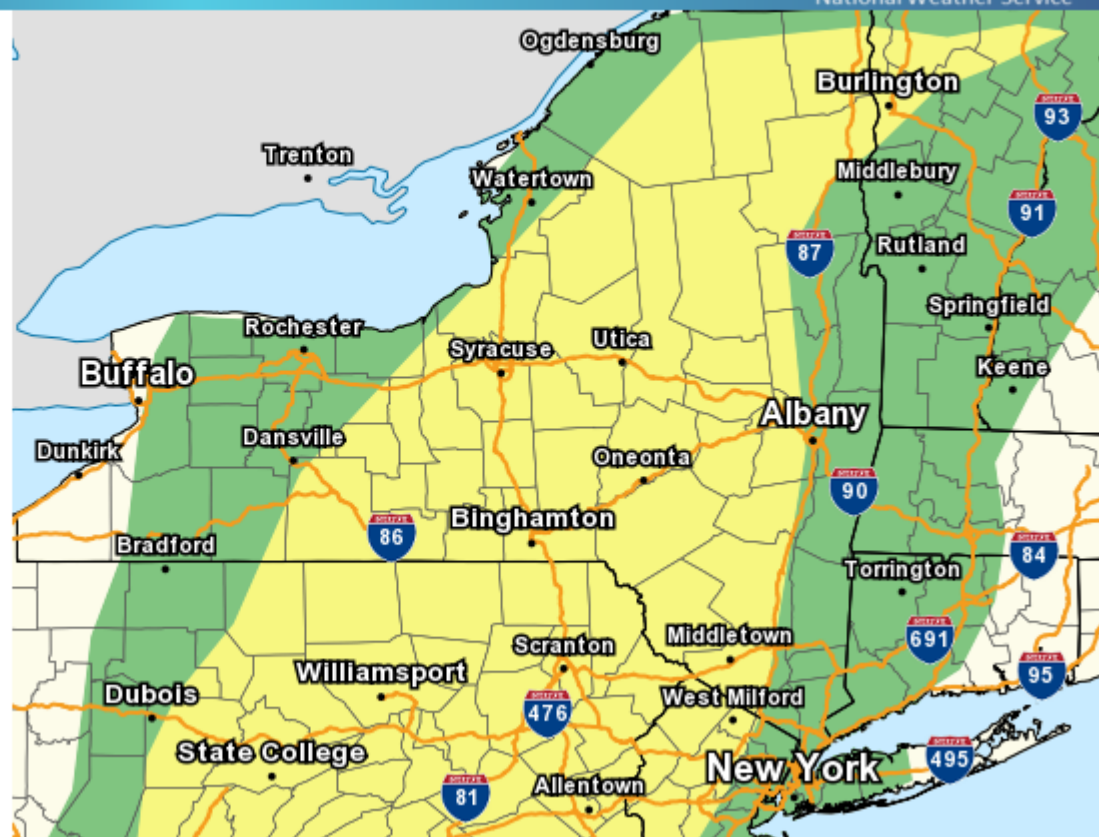
As this snow melts, it will contribute to runoff and river rises this weekend.

Excessive Rainfall Outlook

8 AM Today - 8 AM Saturday

Day One Excessive Rainfall Outlook

- Marginal
- Slight
- Moderate
- High



Event Summary

- ✓ Confidence is **MODERATE** that this event will occur and **MODERATE** on expected impacts
- ✓ Period of greatest impact for **Flooding**: This Evening through Sunday



Moderate to heavy rainfall on nearly saturated ground with already elevated water levels will result in significant river rises and possible flooding, especially across the Adirondacks and western New England. River crests expected Saturday through Sunday.



Urban, low lying, poor drainage flooding and isolated flash flooding is possible this evening through Saturday afternoon for all of the region, with the eastern Catskills, Capital Region and mid Hudson Valley most at risk.

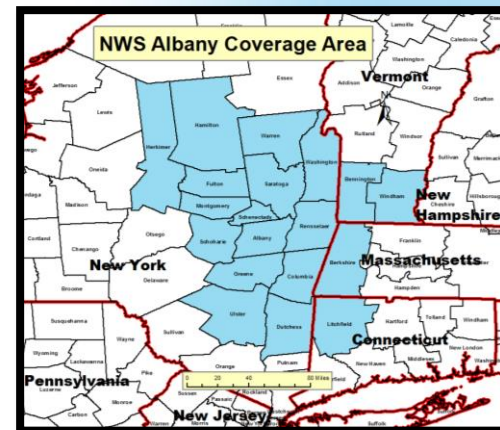
Contact and Next Briefing Information



Next Briefing

When: 6 PM Friday

Method: By Email



Web:

<http://weather.gov/aly>



E-mail:

Alb.stormreport@noaa.gov



Facebook:

[NWSAlbany](https://www.facebook.com/NWSAlbany)



Twitter:

[@NWSAlbany](https://twitter.com/NWSAlbany)



YouTube:

[NWSAlbany](https://www.youtube.com/NWSAlbany)

Disclaimer: The information contained within this briefing is time-sensitive, do not use after 6 PM Friday, April 19, 2019

