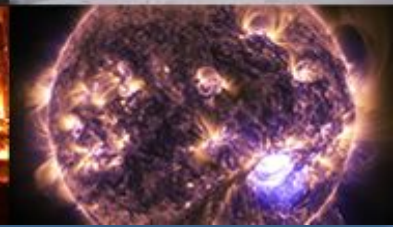
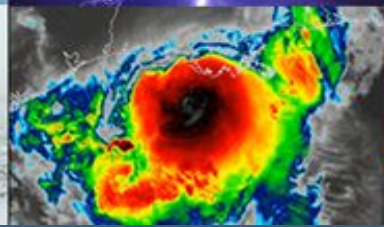


NWS Boston/Norton

Briefing for Jan 6-7, 2022



The background of the slide features a large, semi-transparent NOAA Weather Service logo. The logo includes the word "NOAA" in a bold, sans-serif font, with "NATIONAL WEATHER SERVICE" written in a smaller font below it, all enclosed within a circular emblem.

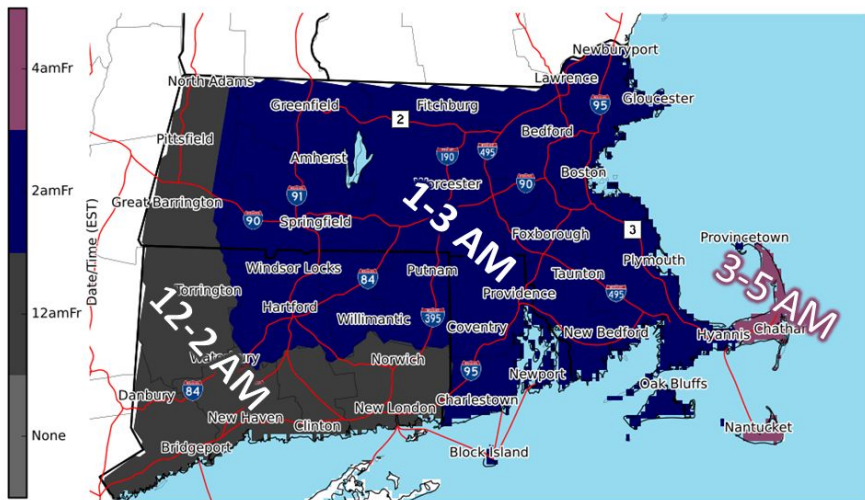
Overview

- High confidence in accumulating snow very late tonight into Friday
 - Westward extent of accumulating snow uncertain
 - Axis of heaviest snow may shift - a situation we will know when snow is on radar
- ***Friday morning rush hour will be impacted***
- No coastal flood issues Friday & Saturday
 - Surge around 1-1.5 ft, but offshore winds (NW) & lower astro tides compared to this past weekend

Onset & Ending Time

Precipitation Onset Time

Valid: Tonight

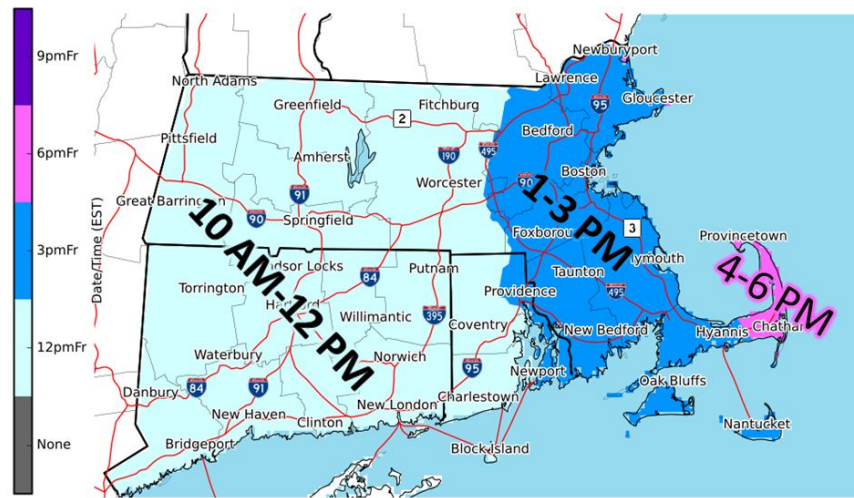


National Weather Service
Boston/Norton, MA
01/06/2022 04:54 AM EST

Follow Us: [f](#) [t](#) [v](#)
weather.gov/Boston

Precipitation Ending Time

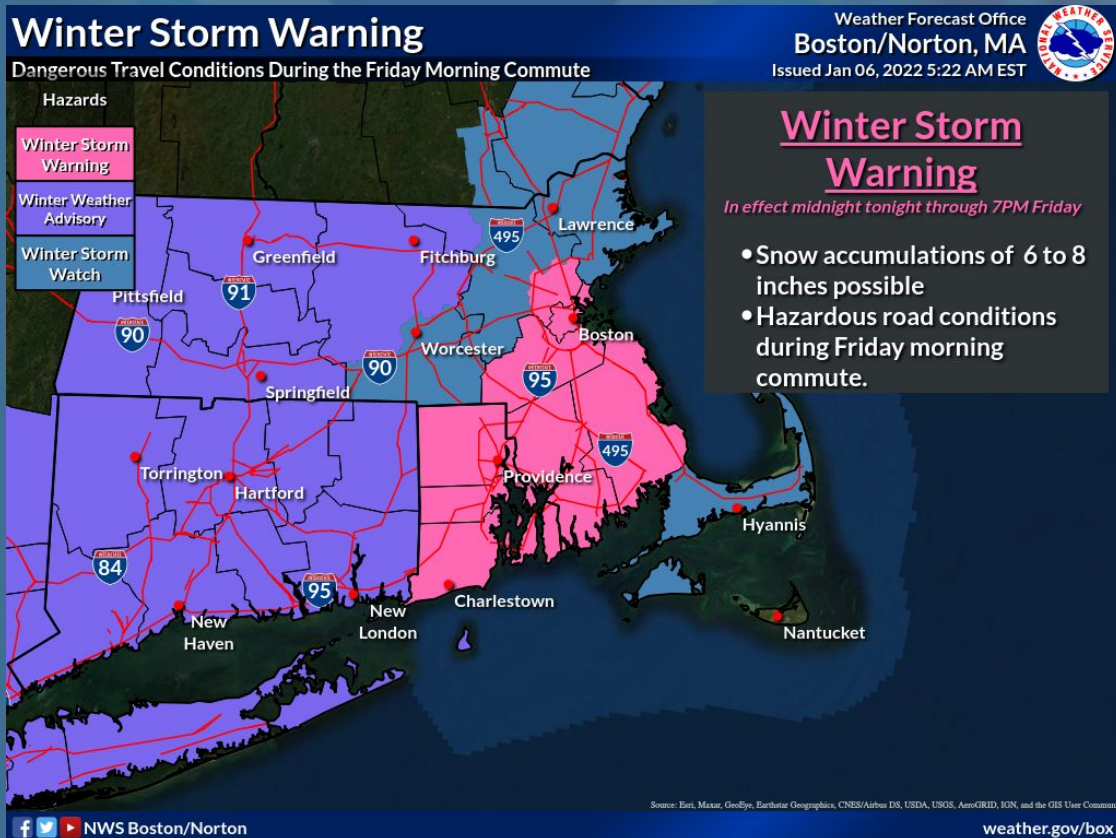
Valid: Friday



National Weather Service
Boston/Norton, MA
01/06/2022 04:54 AM EST

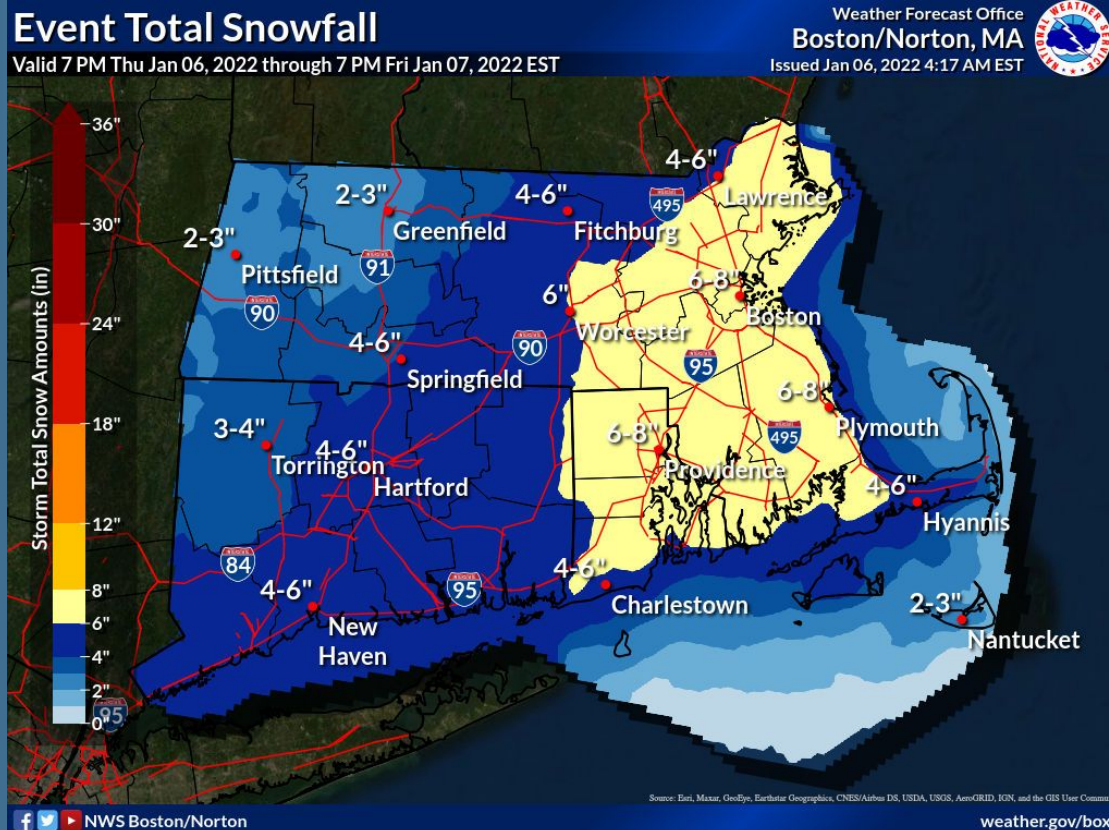
Follow Us: [f](#) [t](#) [v](#)
weather.gov/Boston

Winter Storm Warning



- Warning area is where we have the highest confidence on impact to the Friday morning commute

Snowfall Amounts



- Heaviest snow from roughly 5-10 AM Friday
- 1 inch per hour snowfall rates possible
- Snow not expected to be wet & heavy
- Temperatures cold enough that snow will stick immediately on untreated paved surfaces
- More rain than snow on outer Cape/Islands

- **Hazardous travel due to snow & reduced visibility, which will impact the Friday AM commute**

[illegible]