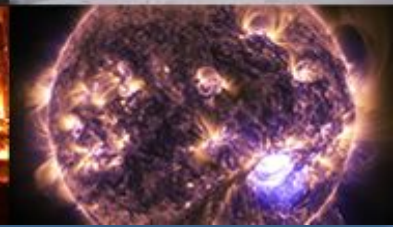
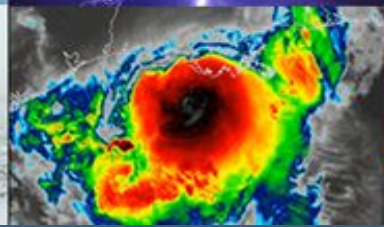


NWS Boston/Norton

Briefing for Jan 6-7, 2022



Overview

- Quick-hitting winter storm with 2-4 hour window of 1-2"/hour snowfall rates across Eastern MA and RI that coincides with Friday morning commute between 6-9 AM.
- First winter storm of this season
- No coastal flood issues Today and Saturday
 - Surge around 1-1.5 ft, but offshore winds (NW) and lower astronomical tides compared to this past weekend



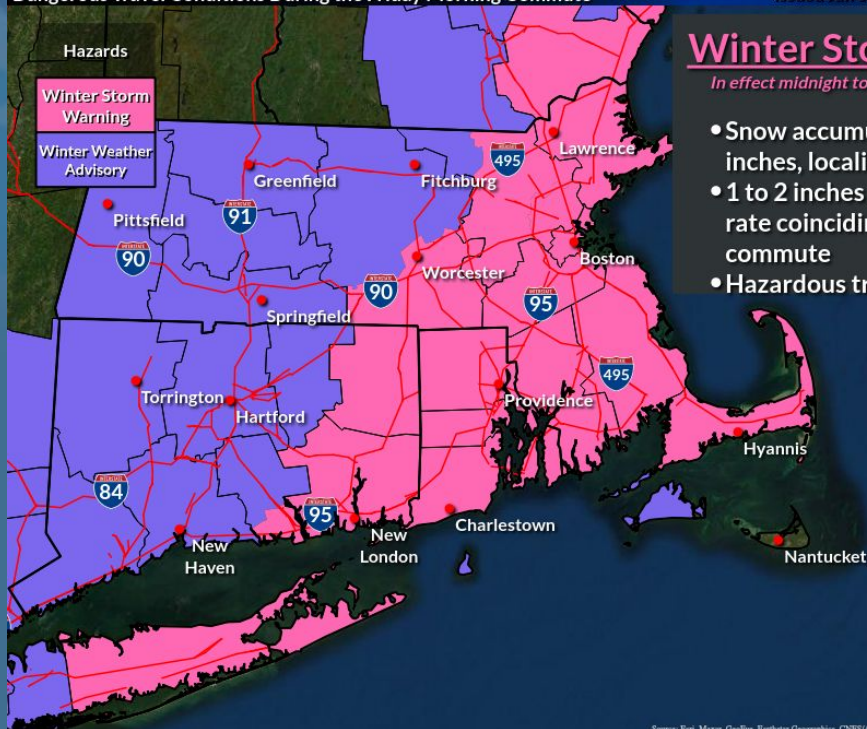
Winter Storm Warning

Winter Storm Warning

Dangerous Travel Conditions During the Friday Morning Commute

Weather Forecast Office
Boston/Norton, MA

Issued Jan 07, 2022 3:13 AM EST



Winter Storm Warning

In effect midnight tonight through 7PM Friday

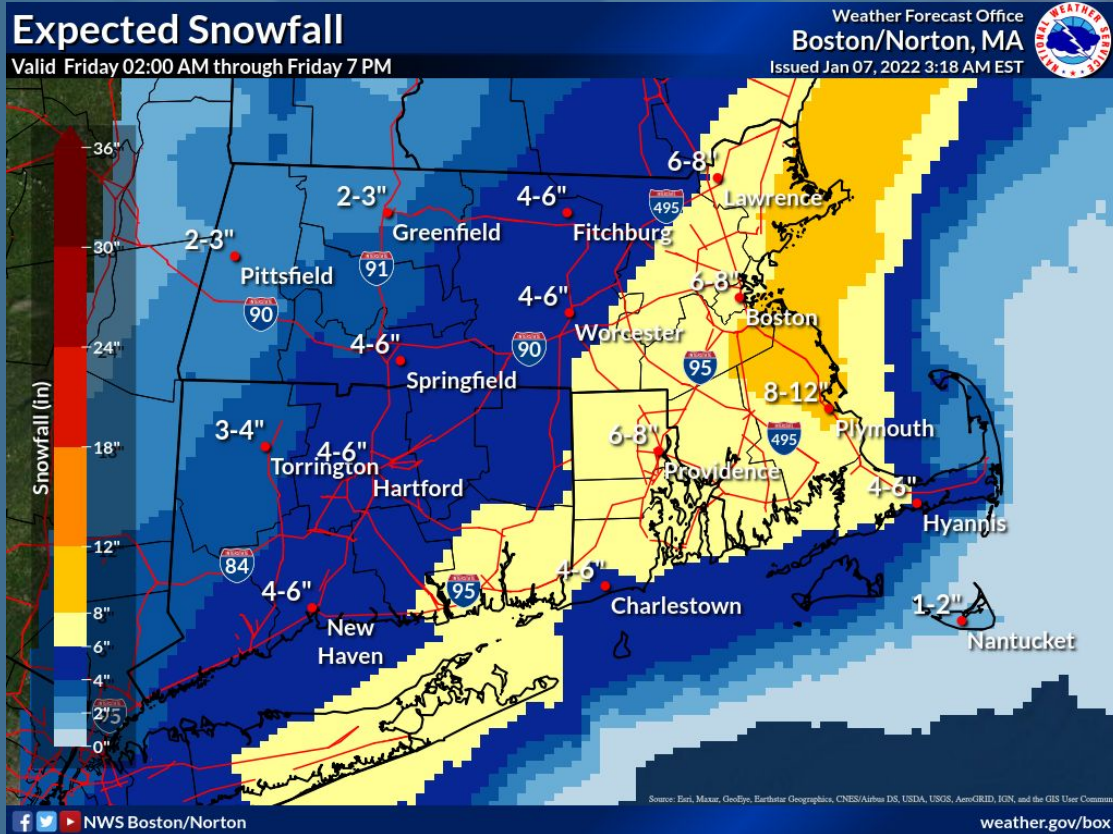
- Snow accumulations of 6 to 8 inches, localized 8 to 10 inches
- 1 to 2 inches per hour snowfall rate coinciding with AM commute
- Hazardous travel conditions

NWS Boston/Norton

Source: Esri, Maxar, GeoEye, Earthstar Geographics, CNES/Airbus DS, USDA, USGS, AeroGRID, IGN, and the GIS User Community

weather.gov/box

Snowfall Amounts

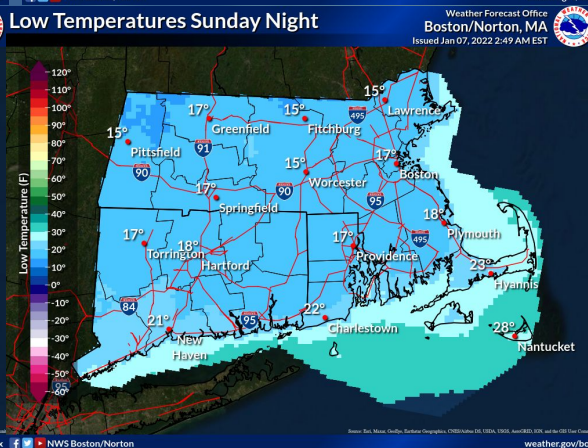
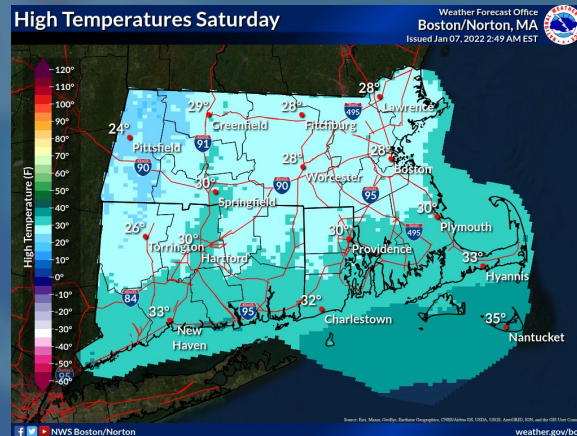


- Main event will be between 5-10 AM today
- 1-2 inches per hour snowfall rates coinciding with the morning commute in Eastern MA and RI
- Snow will stick immediately on untreated paved surfaces
- Snow for Cape Cod and the Islands, except for Nantucket where rain could mix in.

POS

Sunday

freeze-up Sunday
temps fall into the
Sunday night.



Summary

- High confidence in accumulating snow today
- ***Hazardous travel due to 1-2 inches/hour snowfall rate coinciding with the morning commute, including I-95 corridor in RI and MA***
- Dry, but cold and blustery tonight into Saturday
- West to northwest winds 10-20 mph tonight into Saturday. Gusty this evening.
- No coastal flooding expected.
- This is expected to be the last briefing, unless there is a significant change to the forecast.