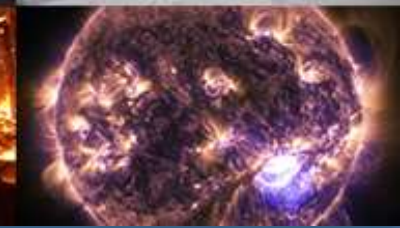
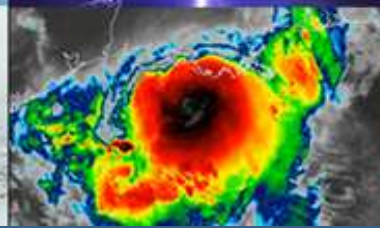




 **NWS Boston/Norton** 
Jan 13, 2022



Highlights

- **Flash Freeze Possible Late Friday In Far Southeast MA Onto Cape Cod:**
 - Rain changes to a brief period of snow Friday afternoon and evening.
 - Very minor accumulations expected but the main concern is for a Flash Freeze.
 - Strong Wind Gusts & Near Whiteout conditions possible east of Hyannis at times Fri Night.
- **High Confidence: Strong Wind Gusts Friday afternoon & night:**
 - *35-50 MPH Wind Gusts Along and southeast of the Boston to Providence corridor.*
 - *60-70 MPH Wind Gusts Across the Cape & Nantucket. Power Outages Possible.*
- **High Confidence: Bitterly Cold Wind Chills Late Friday into early Saturday:**
 - *Wind Chills drop to between 15 and 25 below zero.*
- **High Confidence In Strong Storm Late Sunday Night into Monday, But Impacts Uncertain:**
 - *Main risk for a front end thump of heavy snow across the interior.*
 - *Rain favored along the coast, but a brief burst of snow possible at the onset.*
 - *Period of strong winds and minor Coastal Flooding/Beach Erosion.*

Flash Freeze Potential Friday



Minor Snow Accumulations/Flash Freeze Possible Fri PM

National Weather Service, Boston, MA

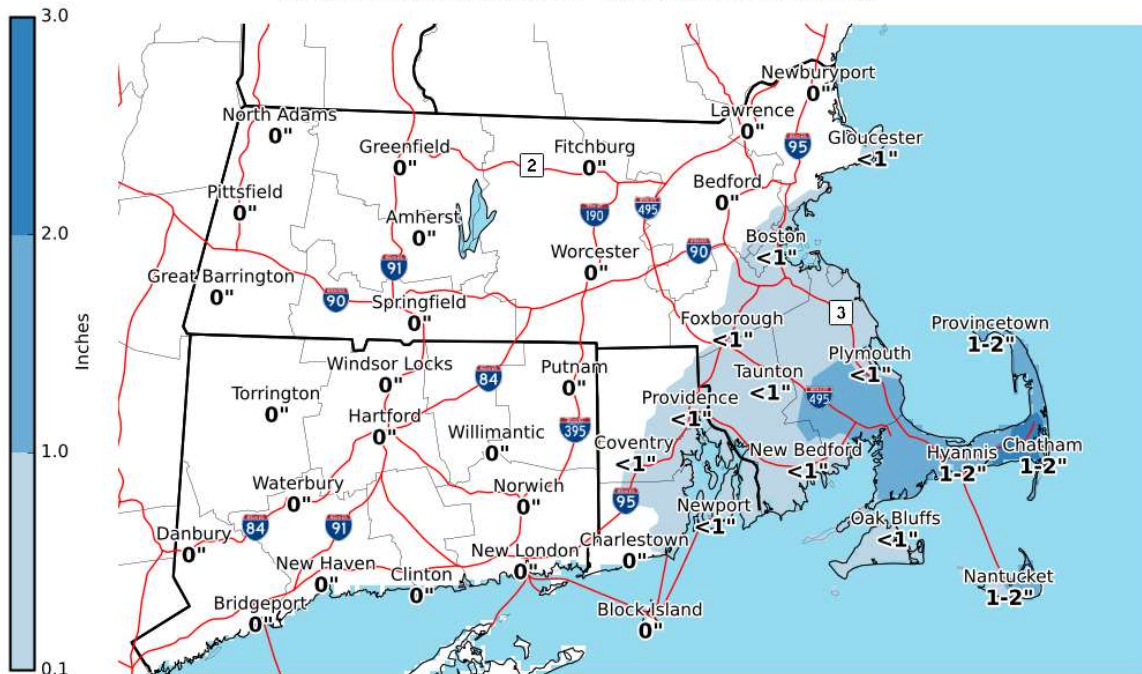


- Rain on Friday will change to a brief period of snow late Friday afternoon and evening.
- Snow Accumulations will be minor on the order a coating to perhaps an inch or two.
- Main concern is a rapid drop in temps resulting in a flash freeze between 3 and 7 pm.

Expected Snowfall Friday Afternoon & Night

Expected Snowfall - Friday Afternoon & Night

Valid: 01/14/2022 07:00 AM - 01/15/2022 01:00 PM EST



- Greatest risk for 1 to 2" of snow will be from Plymouth onto Cape Cod.
- Snow ends west of Hyannis by 8 or 9 PM.
- Ocean effect snow showers linger across the outer Cape into Sat AM. Near white-out conditions possible at times across the outer-Cape given the strong winds.



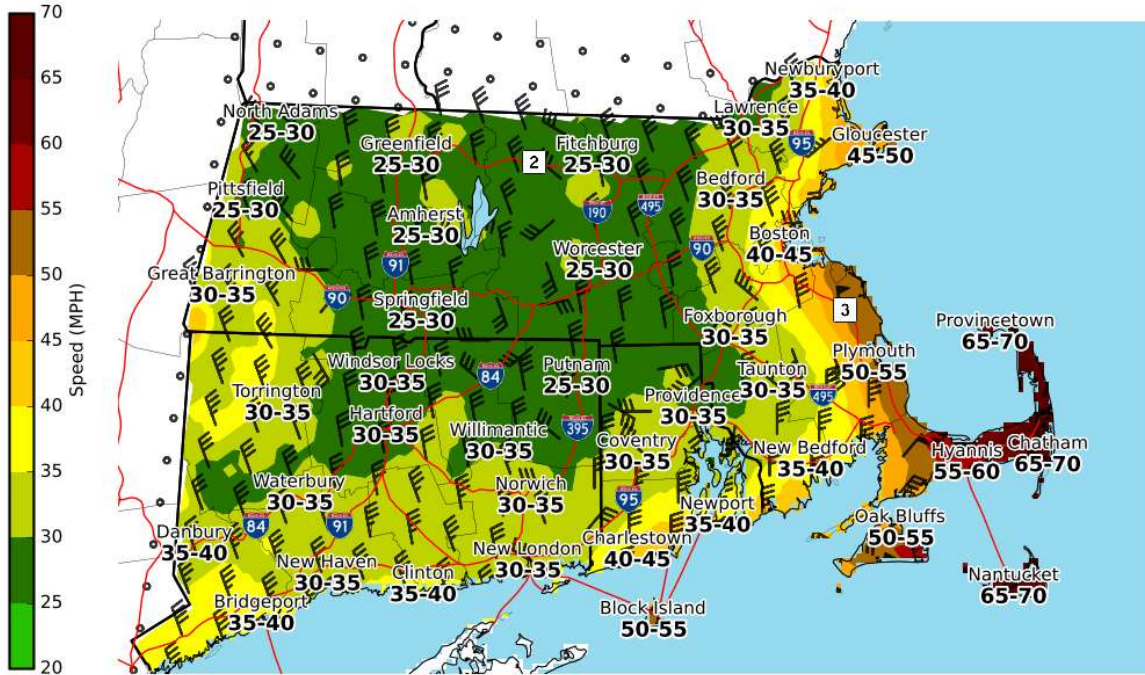
National Weather Service
Boston/Norton, MA
01/13/2022 12:55 PM EST

Follow Us:   
[weather.gov/Boston/winter](https://www.weather.gov/Boston/winter)

Strong Winds Friday Afternoon & Night

Max Wind Gusts (MPH)

Valid: 01/14/2022 10:00 AM - 01/15/2022 08:00 AM EST



National Weather Service
Boston/Norton, MA
01/13/2022 01:00 PM EST

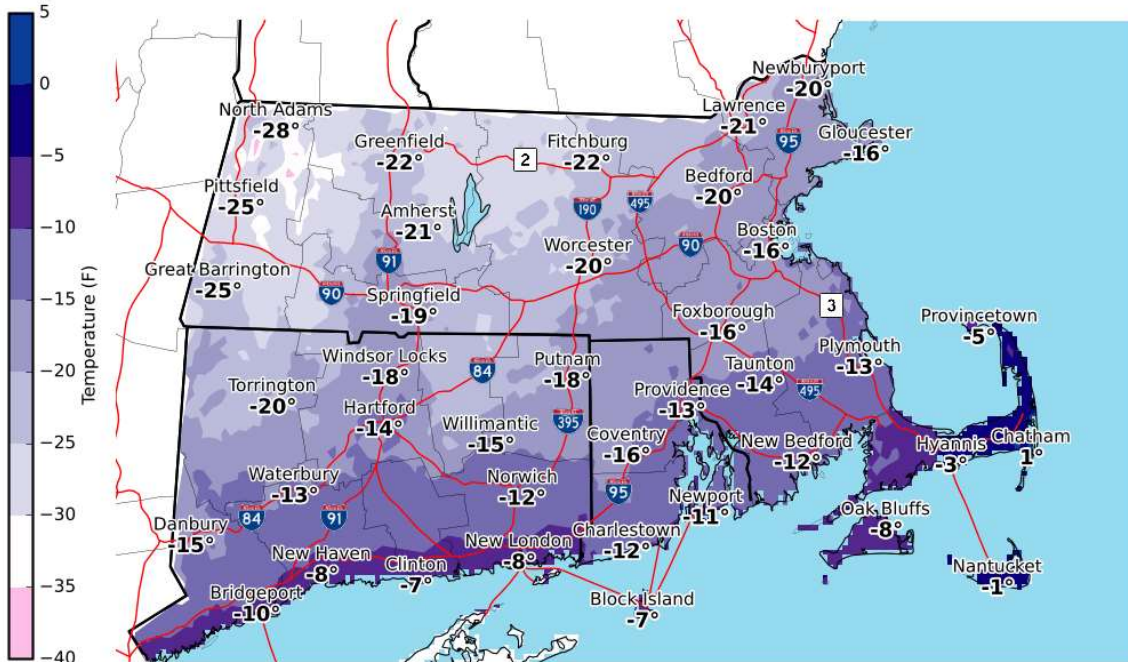
Follow Us: [f](#) [t](#) [v](#)
weather.gov/Boston

- Strongest Winds expected Friday Between 4 PM and Midnight.
- 35-50 MPH Wind Gusts Along the Boston to Providence Corridor.
- 60 to 70 MPH Wind Gusts Across the outer-Cape & Nantucket.

Wind Chills Friday Night Into Early Saturday

Min Apparent Temperature

Valid: Wind Chills Friday Night Into Early Saturday



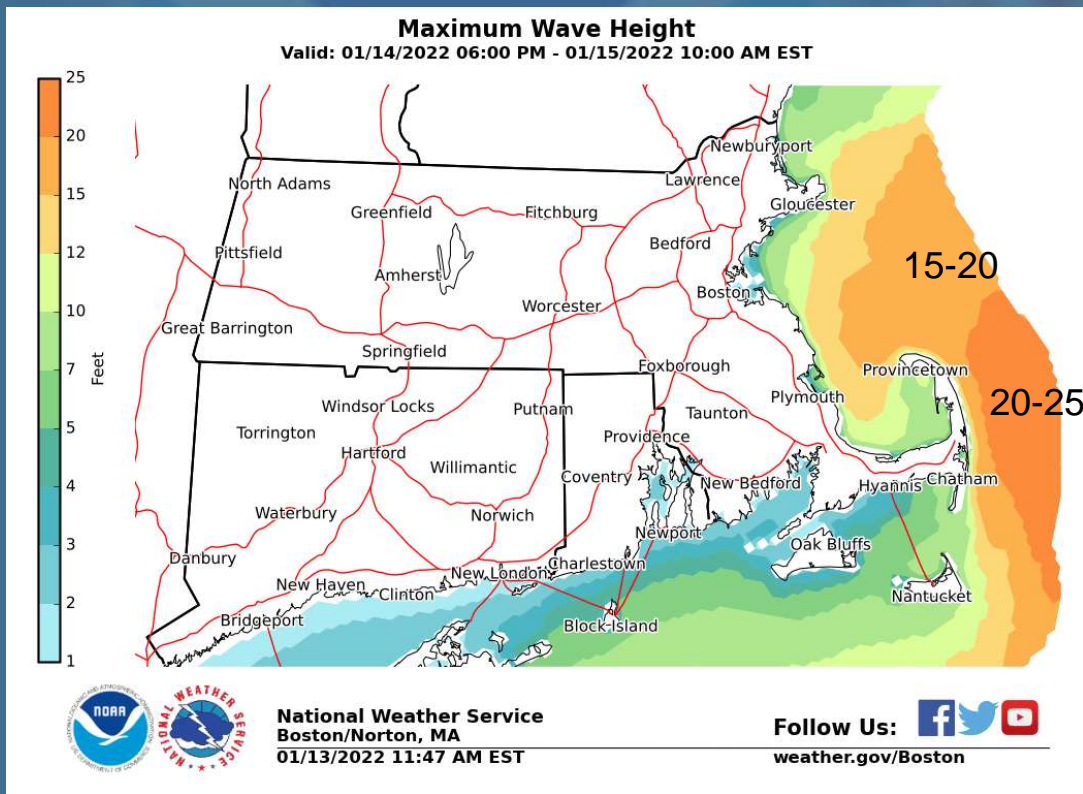
Bitterly Cold
Wind Chills
of 15 to 25
Below Zero.



National Weather Service
Boston/Norton, MA
01/13/2022 02:28 PM EST

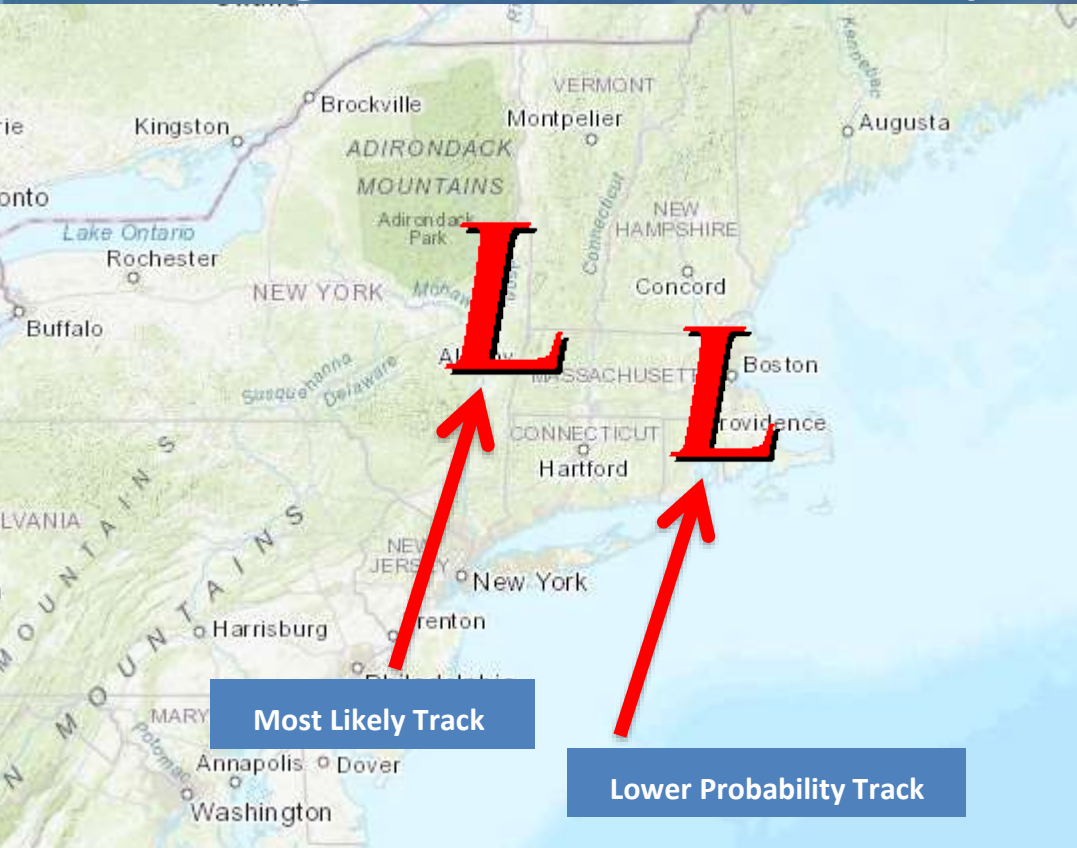
Follow Us:   
[weather.gov/Boston](https://www.weather.gov/Boston)

Dangerous Conditions For Mariners



- Strong Wind gusts of 50-60 knots.
- Seas building to 20+ feet east of Cape Cod.
- Freezing Spray.

Strong Storm Late Sunday Night Into Monday



High Confidence in a Strong Storm:

- Track and Precipitation Types Uncertain
- Impact to the Monday AM Commute Likely
- Potential for a period of strong winds and minor coastal flooding/Beach erosion.

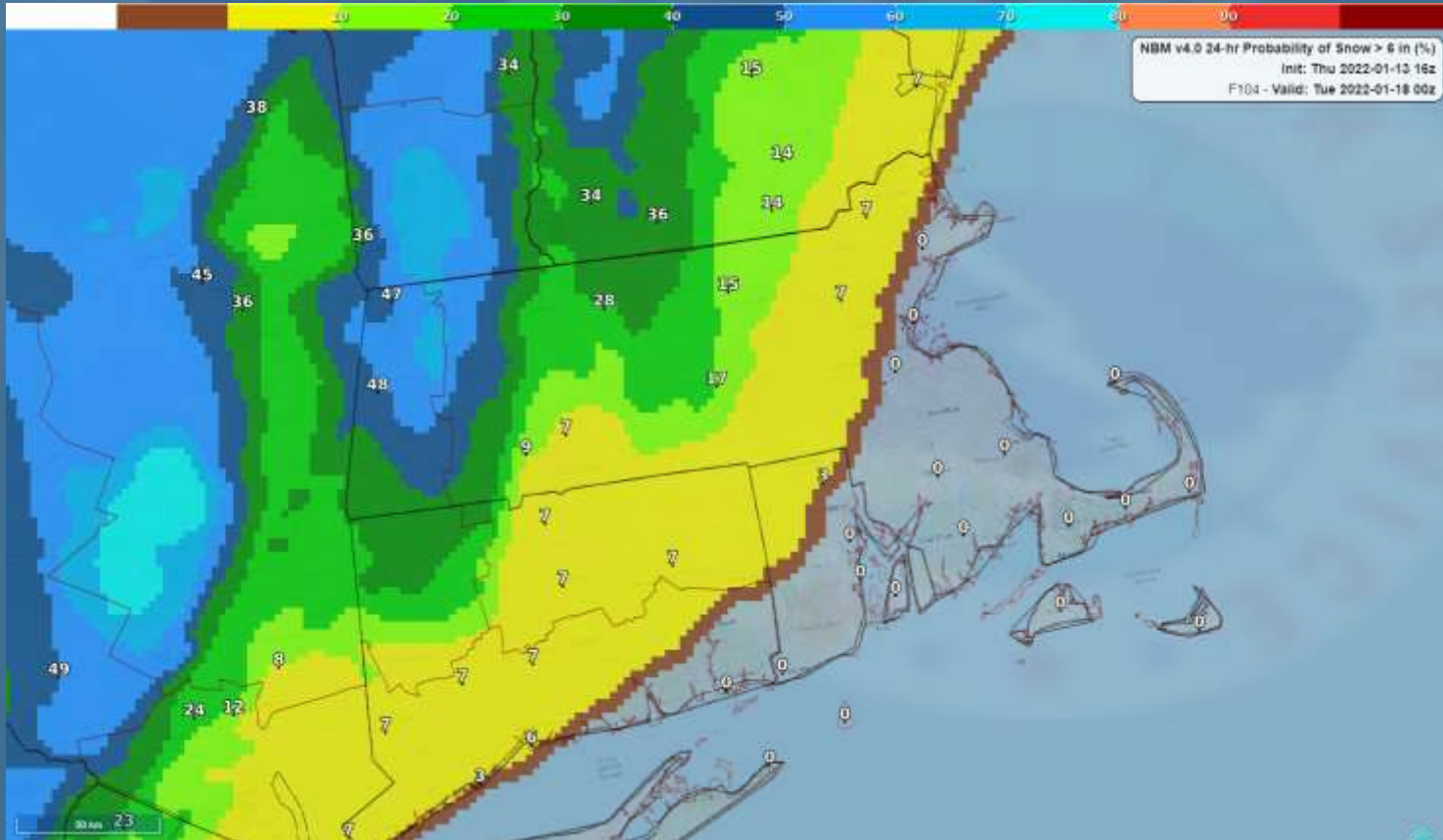
Most Likely Track:

- Greatest risk for 6+” snow will be across western/central MA and northwest CT before a change to rain.
- Rain favored along the Boston to Providence corridor points south and east, but a brief burst of snow is possible at the onset.

Lower Probability Track:

- The potential for 6+” of snow would shift eastward into the Boston to Providence corridor.

Rough Probability 6+” Snow Late Sun Night/Mon



Summary

- **Flash Freeze Possible Late Friday In Far Southeast MA Onto Cape Cod:**
 - Ocean effect snow showers linger across the Outer-Cape into Sat AM. Strong winds will result in near visibility at times, but very localized.
- **High Confidence: Strong Wind Gusts Friday afternoon & night:**
 - *Strongest of the Winds will from 4 PM to midnight across the Cape and Islands. 60-70 MPH Wind Gusts across the Cape & Nantucket*
 - *Power Outages Possible.*
- **High Confidence: Bitterly Cold Wind Chills Late Friday into early Saturday:**
 - *Wind Chills drop to between 15 and 25 below zero.*
- **High Confidence In Strong Storm Late Sunday Night into Monday, But Impacts Uncertain. Main risk for significant snow is across the interior.**