



Hurricane Lee Briefing

5:30 AM ET

Thursday, Sep 14, 2023

Tropical Storm Watches are in effect for the Rhode Island and
Massachusetts coasts



Situation Overview

Hurricane Lee

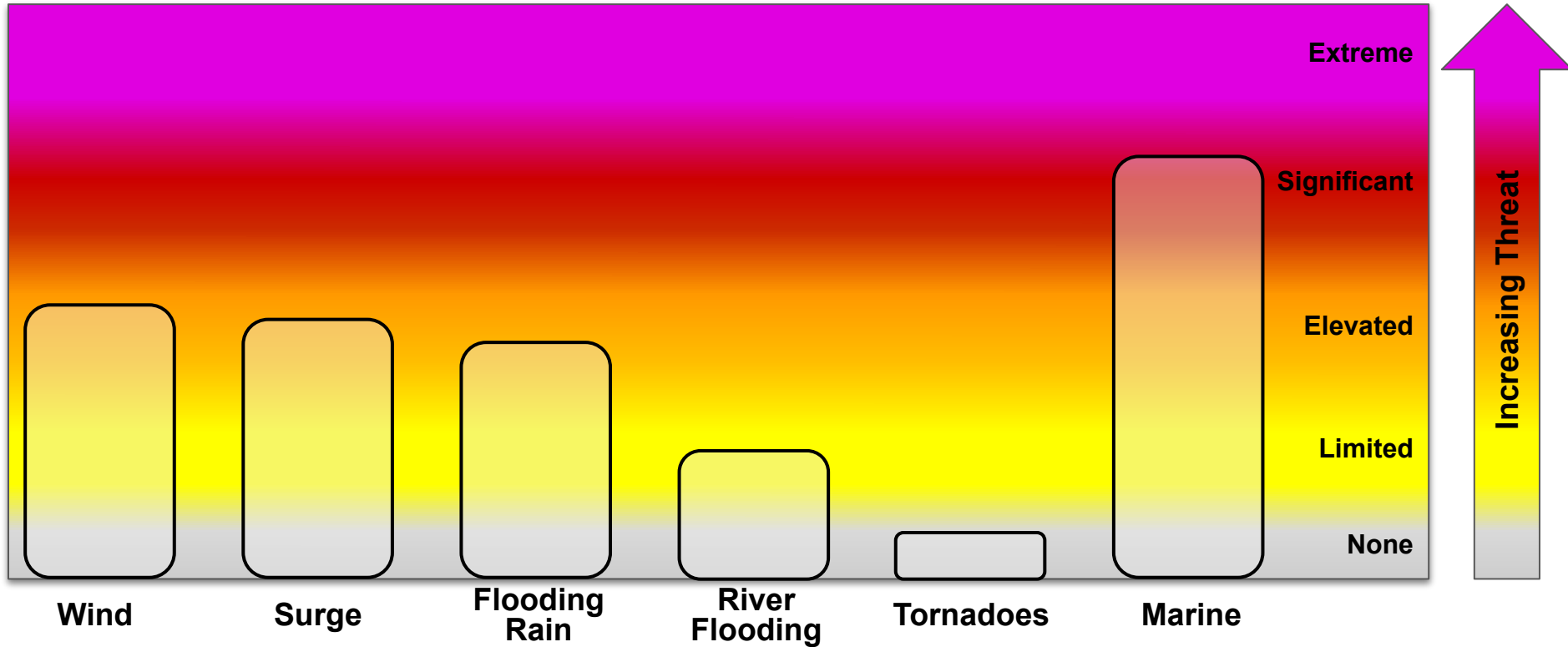
- Hurricane Lee will bring wind, rain and coastal flood impacts to coastal southern New England Friday night into Saturday.
- Wind - Increasing north winds expected Friday night with the peak of the wind after midnight into Saturday afternoon. Strongest winds will impact the Cape and Islands with 55-65 mph gusts possible.
- Storm Surge/Coastal Flooding - The most significant coastal flooding is expected to impact the northern shoreline of Cape Cod and Nantucket around the early morning high tide Saturday. Areas of minor flooding is also possible along east coastal MA during this high tide.
- Rainfall - Heaviest rainfall will occur late Friday night into Saturday, primarily focused across the Cape and Islands where 2 to 4 inches of rain is possible.



Threat Levels

Hurricane Lee

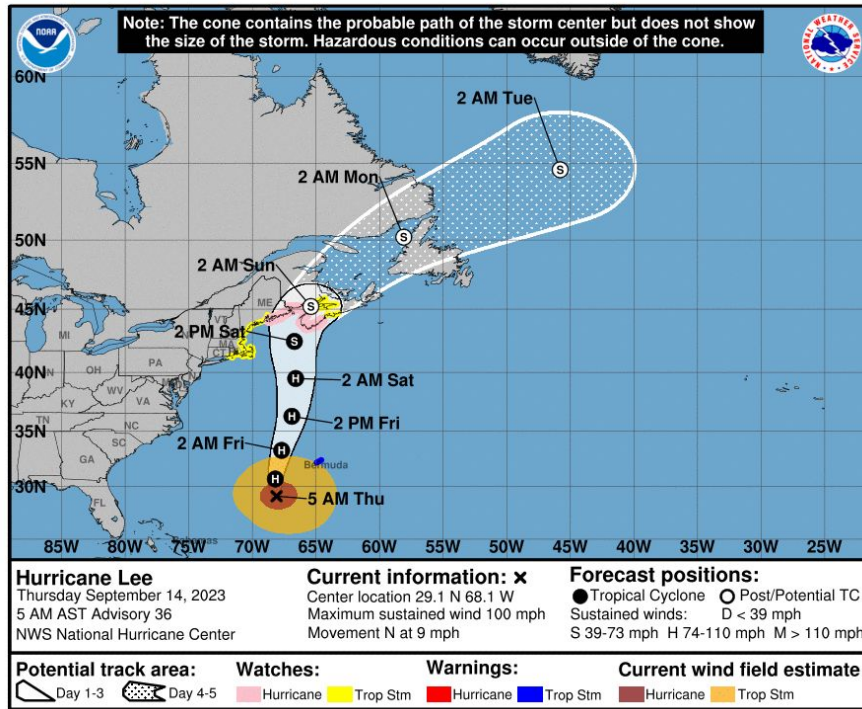
For information on specific hazards in this area, please go to: <https://www.weather.gov/box/tropical>





Situation Overview

Hurricane Lee



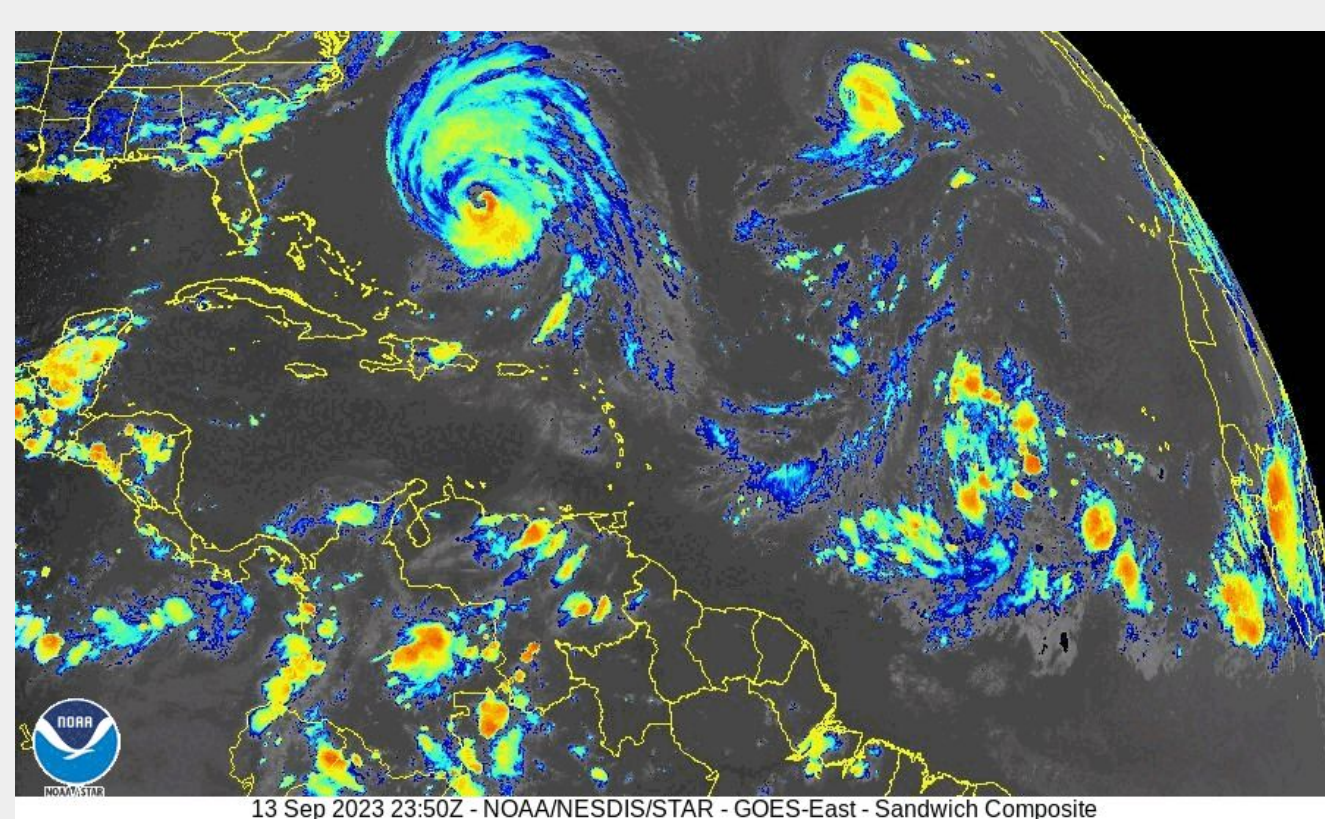
NOTE: Do not focus on the exact track.
Impacts can occur well outside the area enclosed by the cone.

- Tropical Storm Watches are in effect for the Rhode Island and Massachusetts coasts
- Hurricane Lee has a large wind field with wind impacts well to the west of the track
- Storm Surge Watches are in effect for Cape Cod and Nantucket



Current Satellite View

Hurricane Lee



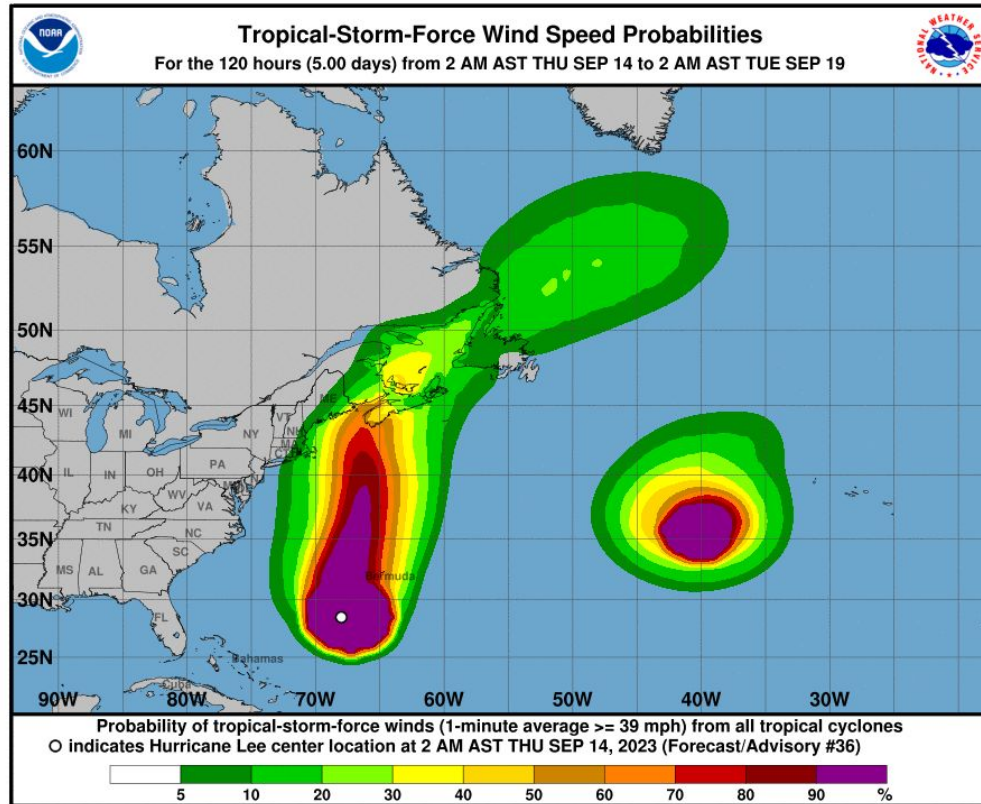
13 Sep 2023 23:50Z - NOAA/NESDIS/STAR - GOES-East - Sandwich Composite

Hurricane Lee is a category 2 hurricane moving north



Tropical Storm Wind Speed Probabilities

Hurricane Lee



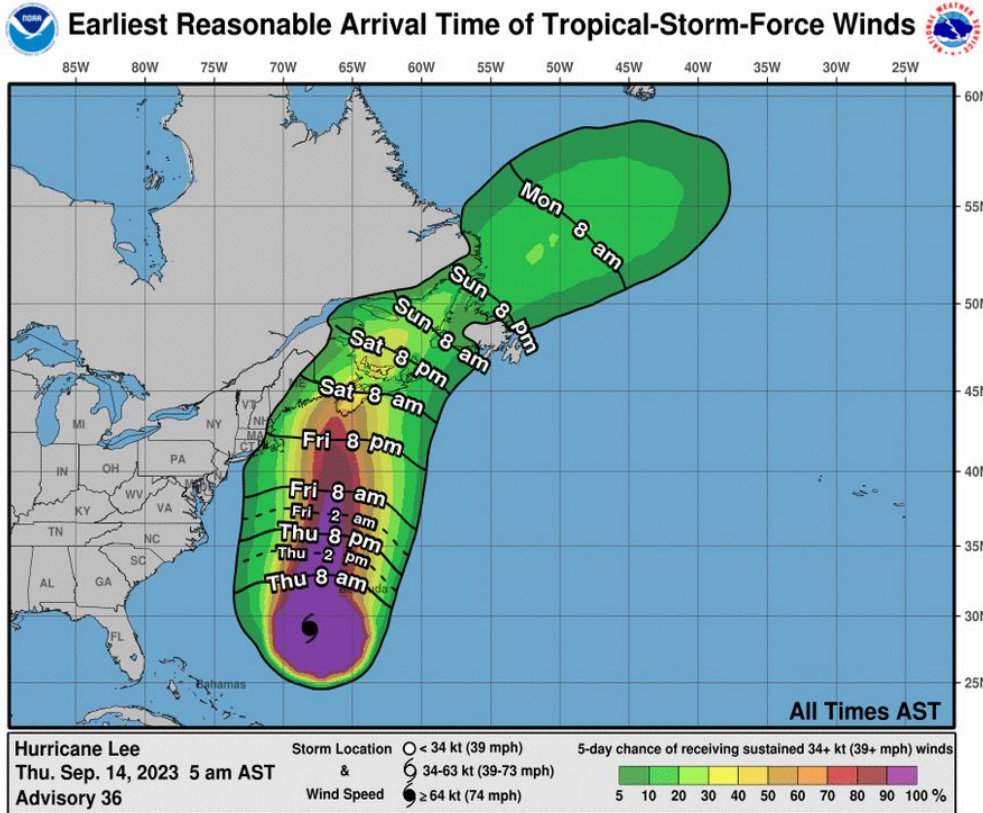
Tropical Storm Force Wind Speed Probabilities:

- There is a 3 in 10 chance for sustained Tropical Storm Force winds across the Cape and Islands
- Cape Cod and the Islands have the greatest risk
- Tropical Storm conditions could begin as early as Friday evening.



Earliest Reasonable Time of Arrival

Hurricane Lee

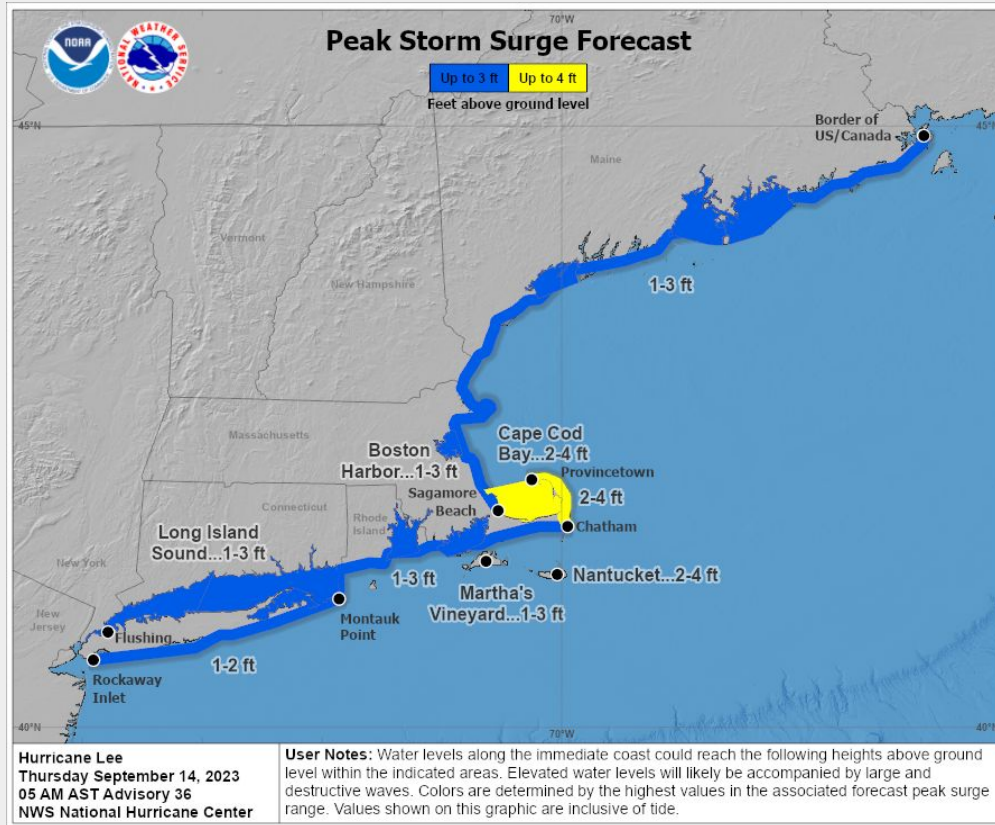


- The earliest reasonable time of arrival of Tropical Storm Force Winds for coastal southern New England will be Friday evening



Peak Storm Surge

Hurricane Lee



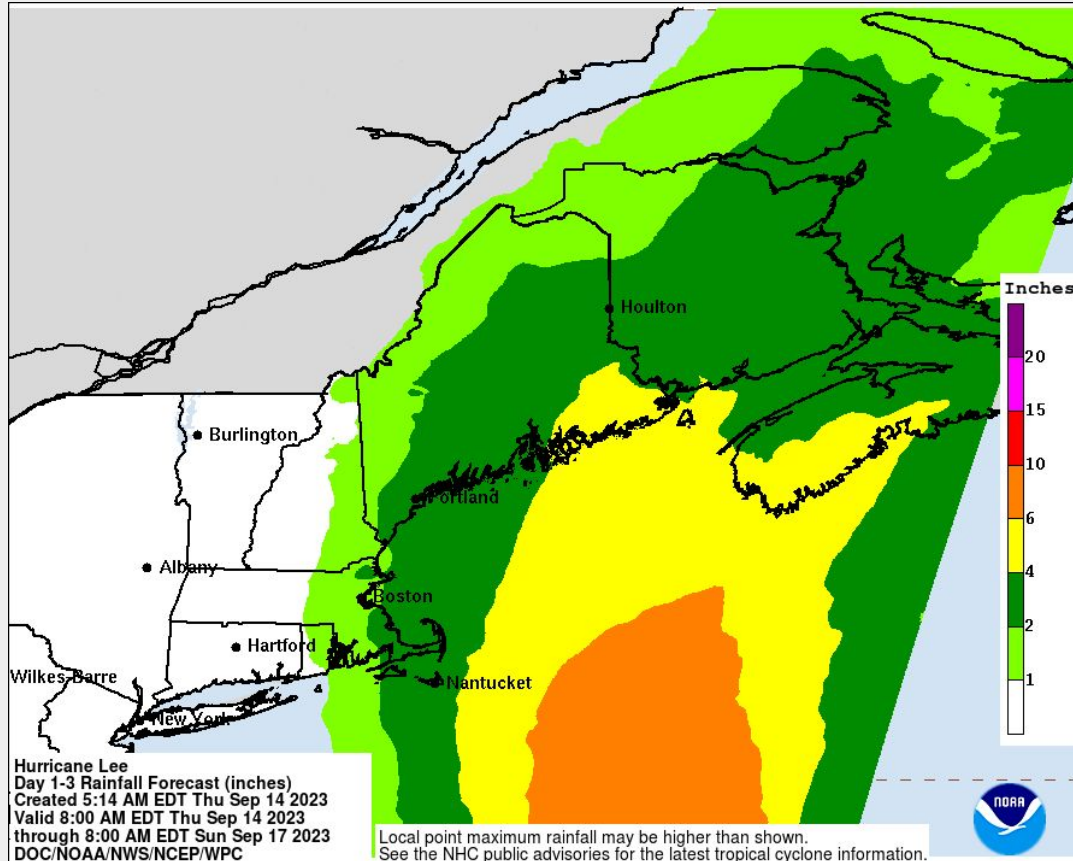
Last updated: 9/14/2023 5:28 AM EDT

National Weather Service - Boston/Norton, MA



Expected Storm Total Rainfall

Hurricane Lee



- Rainfall of 2-4 inches is possible across the Cape and Islands and SE coastal MA

Last updated: 9/14/2023 5:28 AM EDT

National Weather Service - Boston/Norton, MA

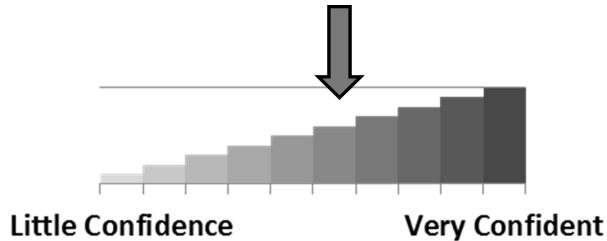


Key Take-Aways

Hurricane Lee

- Hurricane Lee will bring wind, rain and coastal flood impacts to coastal southern New England Friday night into Saturday
- The strongest winds and heaviest rainfall will impact the Cape and Islands
- At least minor coastal flooding is expected along the east coast of MA. More significant coastal flood impacts are possible for Cape Cod and Nantucket

Forecast Confidence



We have moderate confidence in wind and rain impacts, but lower confidence in coastal flood impacts as this will depend on the timing of peak storm surge occurring around high tide



Local Resources

Hurricane Lee

Next Briefing:
5:30 PM ET
Method: Email



Web: weather.gov/box



Phone: 508-622-3280



E-mail: box.operations@noaa.gov



Facebook: [NWSBoston](https://www.facebook.com/NWSBoston)



Twitter: [@NWSBoston](https://twitter.com/NWSBoston)



YouTube: [NWSBoston](https://www.youtube.com/NWSBoston)