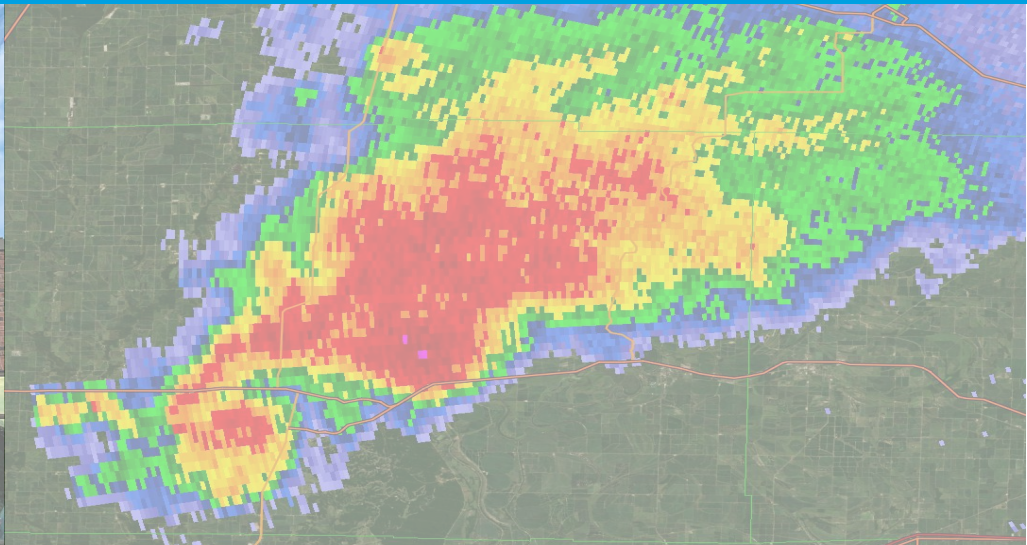




# National Weather Service Boston, MA

## Emergency Management Briefing







## Key Messages:

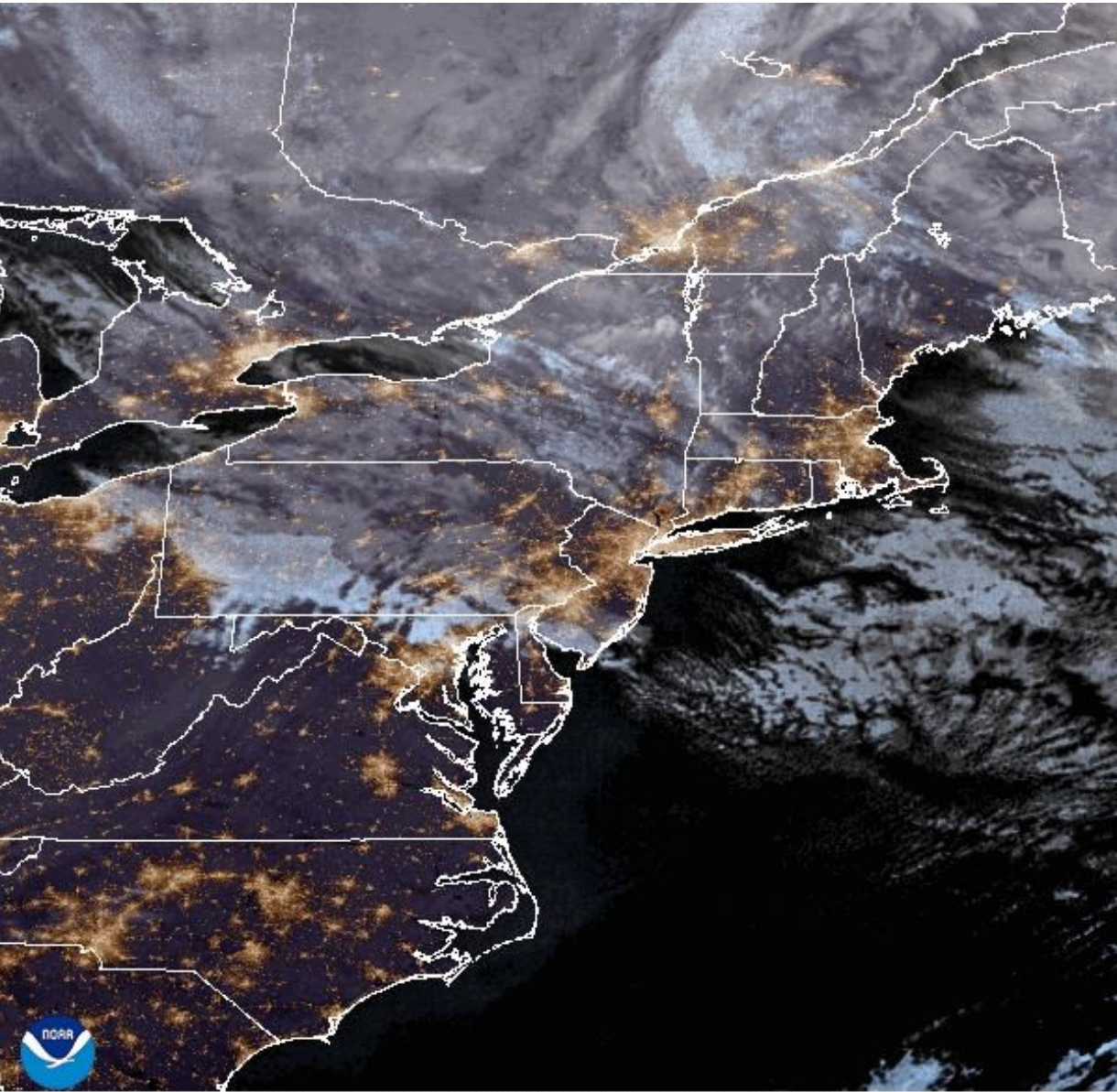
- **Colder than normal temperatures this week.**
- **Series of fast-moving & mainly weak systems midweek thru Monday:**
  - **Tue Night to Wed (mainly rain, higher-elevation light snow to rain)**
  - **Late Fri Night into Sat (light snow to coastal light snow to rain)**
  - **Around next Mon night into next Tue**



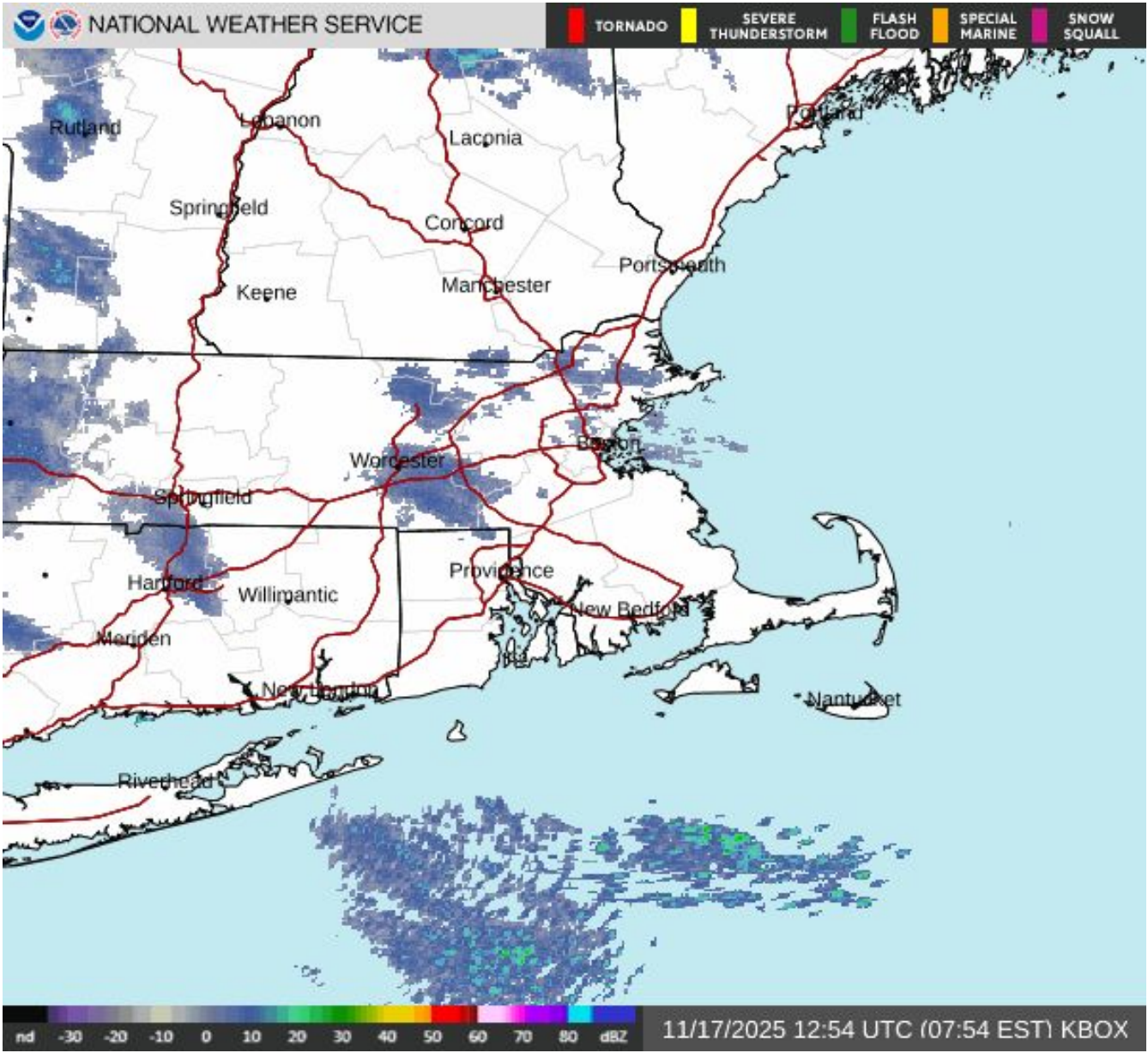


# Current Conditions

December 8, 2025  
9:41 AM



17 Nov 2025 08:11Z - NOAA/NESDIS/STAR - NE - GEOCOLOR Composite



National Oceanic and  
Atmospheric Administration  
U.S. Department of Commerce

National Weather Service  
Boston / Norton, MA





# 7 Day Precipitation Forecast

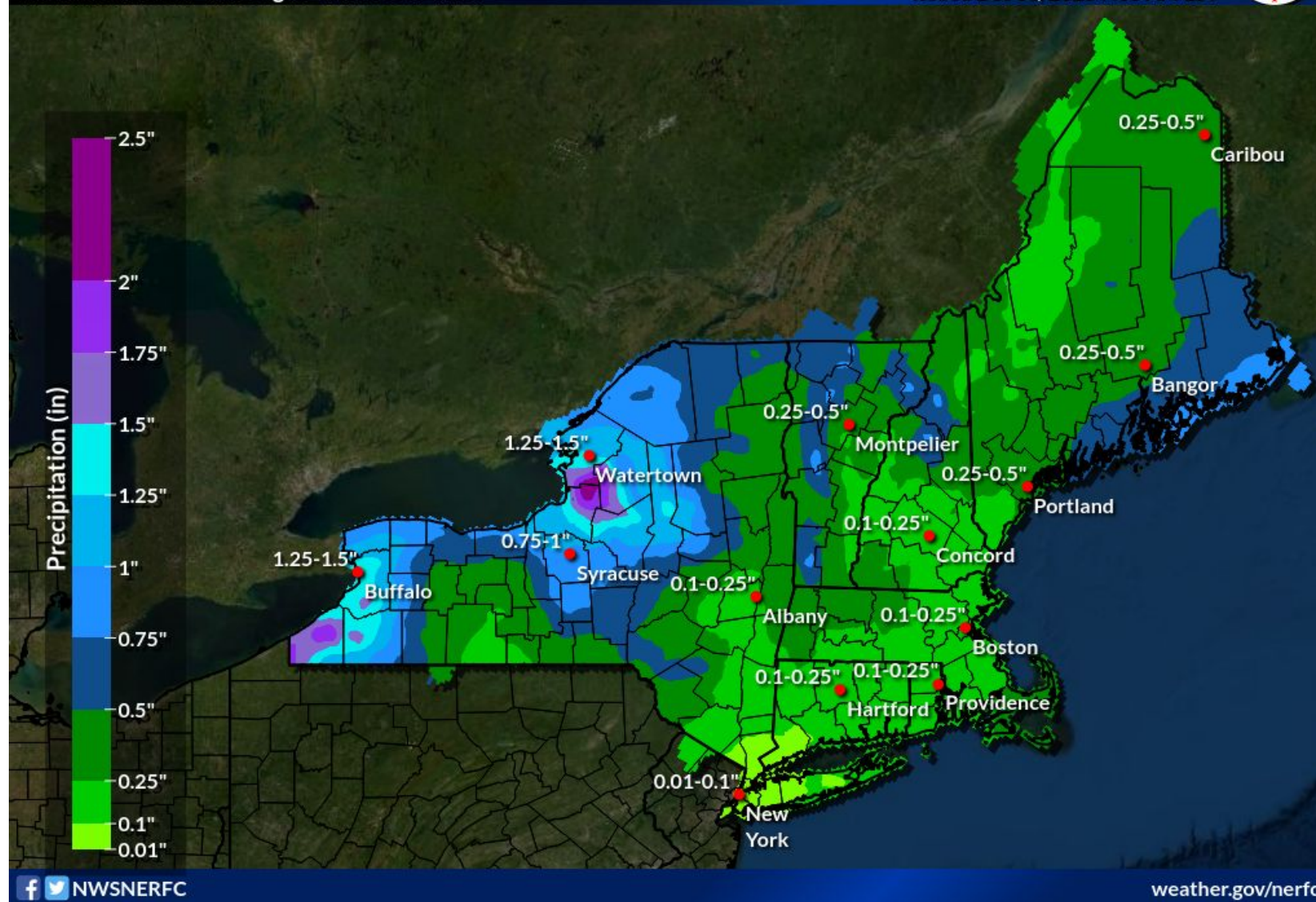
December 8, 2025  
9:41 AM

## 7 Day WPC Precipitation Forecast

Valid Mon 7:00AM through Mon 7:00AM EST

River Forecast Center  
Northeast RFC

Issued Dec 08, 2025 7:05 AM EST



- Series of weaker, fast-moving systems midweek thru Monday:
  - Up to a half-inch of liquid-equivalent precip. in western higher terrain (some falling as snow)
  - Quarter-inch or less of liquid-equivalent precip. (mainly rain, some as snow)



National Oceanic and  
Atmospheric Administration  
U.S. Department of Commerce

National Weather Service  
Boston / Norton, MA





# Precipitation Probability & Weather

December 8, 2025  
9:41 AM

Weather Forecast																															
	12/8 Mon			12/9 Tue				12/10 Wed				12/11 Thu				12/12 Fri				12/13 Sat				12/14 Sun				12/15 Mon			
	6am	12pm	6pm	12am	6am	12pm	6pm	12am	6am	12pm	6pm	12am	6am	12pm	6pm	12am	6am	12pm	6pm	12am	6am	12pm	6pm	12am	6am	12pm	6pm	12am	6am	12pm	
Boston	0%	0%	0%	0%	0%	5%	35%	35%	40%	70%	60%	35%	15%	5%	10%	10%	10%	15%	25%	35%	40%	40%	30%	15%	10%	10%	10%	10%	10%	15%	
Gloucester	0%	0%	0%	0%	0%	5%	40%	40%	40%	70%	60%	40%	15%	10%	10%	10%	15%	15%	20%	35%	45%	40%	35%	20%	15%	15%	10%	10%	10%	15%	
Hartford	0%	0%	0%	0%	0%	5%	25%	25%	50%	75%	65%	35%	10%	5%	10%	10%	10%	15%	30%	45%	40%	35%	25%	15%	10%	10%	10%	10%	5%	10%	
Hyannis	0%	0%	0%	0%	0%	5%	30%	35%	25%	45%	45%	40%	20%	10%	10%	15%	15%	20%	30%	45%	55%	55%	45%	30%	20%	25%	25%	20%	15%	20%	
Lowell	0%	0%	0%	0%	0%	5%	40%	30%	45%	75%	65%	40%	15%	5%	10%	10%	10%	15%	25%	35%	40%	35%	25%	15%	10%	10%	10%	10%	10%	15%	
Nantucket	0%	0%	0%	0%	0%	5%	20%	30%	25%	40%	45%	35%	20%	10%	15%	15%	20%	25%	30%	45%	55%	55%	50%	35%	25%	30%	25%	20%	15%	20%	
New Bedford	0%	0%	0%	0%	0%	5%	30%	30%	25%	55%	50%	35%	15%	10%	10%	10%	15%	20%	30%	40%	50%	45%	35%	20%	15%	15%	20%	15%	15%	15%	
New Haven	0%	0%	0%	0%	0%	0%	20%	20%	40%	65%	65%	35%	15%	5%	5%	10%	10%	15%	25%	45%	45%	35%	25%	15%	10%	10%	10%	10%	10%	10%	
Newport	0%	0%	0%	0%	0%	5%	30%	30%	30%	55%	55%	35%	15%	5%	10%	10%	15%	20%	30%	45%	50%	45%	35%	20%	15%	15%	15%	15%	15%	10%	15%
Pittsfield	0%	0%	0%	0%	0%	5%	45%	45%	70%	90%	90%	65%	30%	15%	20%	20%	20%	20%	20%	40%	50%	50%	50%	40%	25%	10%	15%	15%	15%	10%	15%
Providence	0%	0%	0%	0%	0%	5%	30%	30%	35%	65%	55%	35%	15%	5%	10%	10%	15%	15%	25%	40%	45%	40%	30%	15%	10%	15%	15%	10%	10%	15%	
Springfield	0%	0%	0%	0%	0%	5%	30%	25%	55%	80%	65%	35%	15%	5%	10%	10%	10%	15%	15%	30%	40%	40%	35%	25%	15%	5%	10%	10%	10%	5%	10%
Worcester	0%	0%	0%	0%	0%	5%	35%	30%	45%	75%	65%	35%	15%	5%	10%	10%	10%	15%	15%	25%	35%	35%	25%	15%	10%	10%	10%	10%	5%	15%	

Created: 8 am EST Mon 12/8/2025. Shows most impactful weather for the period beginning at the time shown. Weather symbols display where Probability of Precipitation ≥ 0%.

- Rain +

- Wintry Mix +

- Snow +

Created: 8 am EST Mon 12/8/2025 |





# Temperature Forecast

December 8, 2025  
9:41 AM

## Maximum Temperature Forecast (°F)

	12/9 Tue	12/10 Wed	12/11 Thu	12/12 Fri	12/13 Sat	12/14 Sun	12/15 Mon
Boston	32	46	39	35	34	30	32
Gloucester	35	47	41	37	36	32	34
Hartford	32	43	37	35	33	29	30
Hyannis	39	49	42	38	38	32	37
Lowell	30	42	37	34	32	29	30
Nantucket	41	51	45	40	39	34	38
New Bedford	38	49	42	37	37	32	35
New Haven	34	47	40	37	35	32	33
Newport	38	48	41	37	36	32	35
Pittsfield	26	36	33	28	26	22	24
Providence	34	46	39	36	34	30	32
Springfield	29	41	36	34	31	27	29
Worcester	30	41	35	32	30	27	28



Maximum Temperature Forecast (°F)

Created: 8 am EST Mon 12/8/2025 | Values are maximums over the period beginning at the time shown.

## Minimum Temperature Forecast (°F)

	12/9 Tue	12/10 Wed	12/11 Thu	12/12 Fri	12/13 Sat	12/14 Sun	12/15 Mon
Boston	12	31	28	23	24	18	18
Gloucester	14	29	28	23	24	18	18
Hartford	9	28	26	21	22	18	14
Hyannis	21	37	30	26	25	21	21
Lowell	6	27	24	18	20	13	13
Nantucket	24	41	34	30	29	24	24
New Bedford	13	31	24	24	23	17	17
New Haven	12	30	28	23	23	17	17
Newport	17	38	31	26	26	20	20
Pittsfield	-1	22	21	14	16	8	8
Providence	12	31	27	22	23	16	16
Springfield	6	25	25	18	21	17	12
Worcester	7	27	24	19	20	13	13



Minimum Temperature Forecast (°F)

Created: 8 am EST Mon 12/8/2025 | Values are minimums over the period beginning at the time shown.

Average Highs: Low to mid 40s

Average Lows: Mid 20s to 30





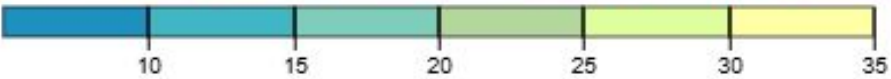


# Wind Gust Forecast

December 8, 2025  
9:41 AM

## Maximum Wind Gust Forecast (mph)

	12/8 Mon		12/9 Tue				12/10 Wed				12/11 Thu				12/12 Fri				12/13 Sat				12/14 Sun				12/15 Mon
	12pm	6pm	12am	6am	12pm	6pm	12am	6am	12pm	6pm	12am	6am	12pm	6pm	12am	6am	12pm	6pm	12am	6am	12pm	6pm	12am	6am	12pm	6pm	12am
Boston	24↘	16↘	10↘	8↗	13↗	14↗	15↗	20↗	21↗	20↗	17↗	21↗	21↗	17↗	15↗	17↗	18↗	15↗	13↗	18↗	21↗	21↗	20↗	22↗	22↗	17↗	15↗
Gloucester	26↘	20↘	17↘	12↘	16↗	21↗	22↗	21↗	23↗	23↗	22↗	22↗	22↗	21↗	20↗	20↗	20↗	18↗	17↗	20↗	23↗	25↗	25↗	24↗	23↗	22↗	20↗
Hartford	22↓	13↓	10↓	7↗	14↗	14↗	14↗	20↗	23↗	21↗	16↗	20↗	21↗	15↗	12↗	16↗	18↗	13↗	12↗	20↗	23↗	22↗	17↗	21↗	22↗	16↗	12↗
Hyannis	30↘	20↓	17↘	12↘	14↗	23↗	24↗	23↗	26↗	26↗	23↗	23↗	23↗	21↗	20↗	20↗	20↗	18↗	17↗	22↗	25↗	28↗	28↗	25↗	24↗	23↗	22↗
Lowell	23↘	10↘	6↗	7↗	10↗	10↗	12↗	17↗	18↗	15↗	14↗	20↗	21↗	15↗	10↗	17↗	17↗	12↗	9↗	16↗	20↗	17↗	16↗	21↗	22↗	15↗	10↗
Nantucket	30↓	23↓	17↓	13↓	14↗	23↗	25↗	24↗	28↗	28↗	25↗	25↗	24↗	22↗	21↗	21↗	21↗	21↗	18↗	23↗	28↗	29↗	29↗	28↗	24↗	24↗	22↗
New Bedford	24↓	17↓	15↓	10↓	14↗	22↗	22↗	24↗	26↗	25↗	22↗	22↗	22↗	18↗	17↗	18↗	20↗	17↗	15↗	21↗	23↗	23↗	23↗	23↗	22↗	20↗	17↗
New Haven	22↓	13↓	9↓	8↗	16↗	21↗	20↗	20↗	23↗	21↗	17↗	21↗	21↗	16↗	13↗	17↗	20↗	14↗	13↗	21↗	23↗	23↗	20↗	21↗	21↗	16↗	13↗
Newport	25↓	17↓	14↓	9↓	14↗	22↗	22↗	24↗	28↗	25↗	22↗	21↗	21↗	18↗	16↗	17↗	18↗	16↗	15↗	20↗	23↗	23↗	23↗	22↗	21↗	20↗	17↗
Pittsfield	15↘	5↘	2↘	6↗	15↗	17↗	17↗	18↗	21↗	18↗	17↗	21↗	21↗	16↗	12↗	16↗	16↗	13↗	10↗	18↗	21↗	20↗	20↗	22↗	22↗	17↗	12↗
Providence	23↓	15↓	8↘	7↗	12↗	13↗	14↗	20↗	22↗	20↗	15↗	20↗	20↗	15↗	12↗	16↗	17↗	13↗	10↗	17↗	21↗	18↗	16↗	21↗	21↗	15↗	12↗
Springfield	21↓	12↓	10↘	7↗	15↗	17↗	17↗	20↗	22↗	21↗	17↗	20↗	21↗	16↗	13↗	16↗	18↗	14↗	13↗	18↗	22↗	21↗	18↗	21↗	22↗	16↗	13↗
Worcester	23↓	12↘	7↗	9↗	13↗	15↗	16↗	20↗	21↗	18↗	18↗	21↗	21↗	16↗	14↗	18↗	20↗	13↗	12↗	20↗	22↗	20↗	20↗	22↗	22↗	15↗	14↗



Maximum Wind Gust Forecast (mph)

Created: 8 am EST Mon 12/8/2025 | Values are maximums over the period beginning at the time shown.



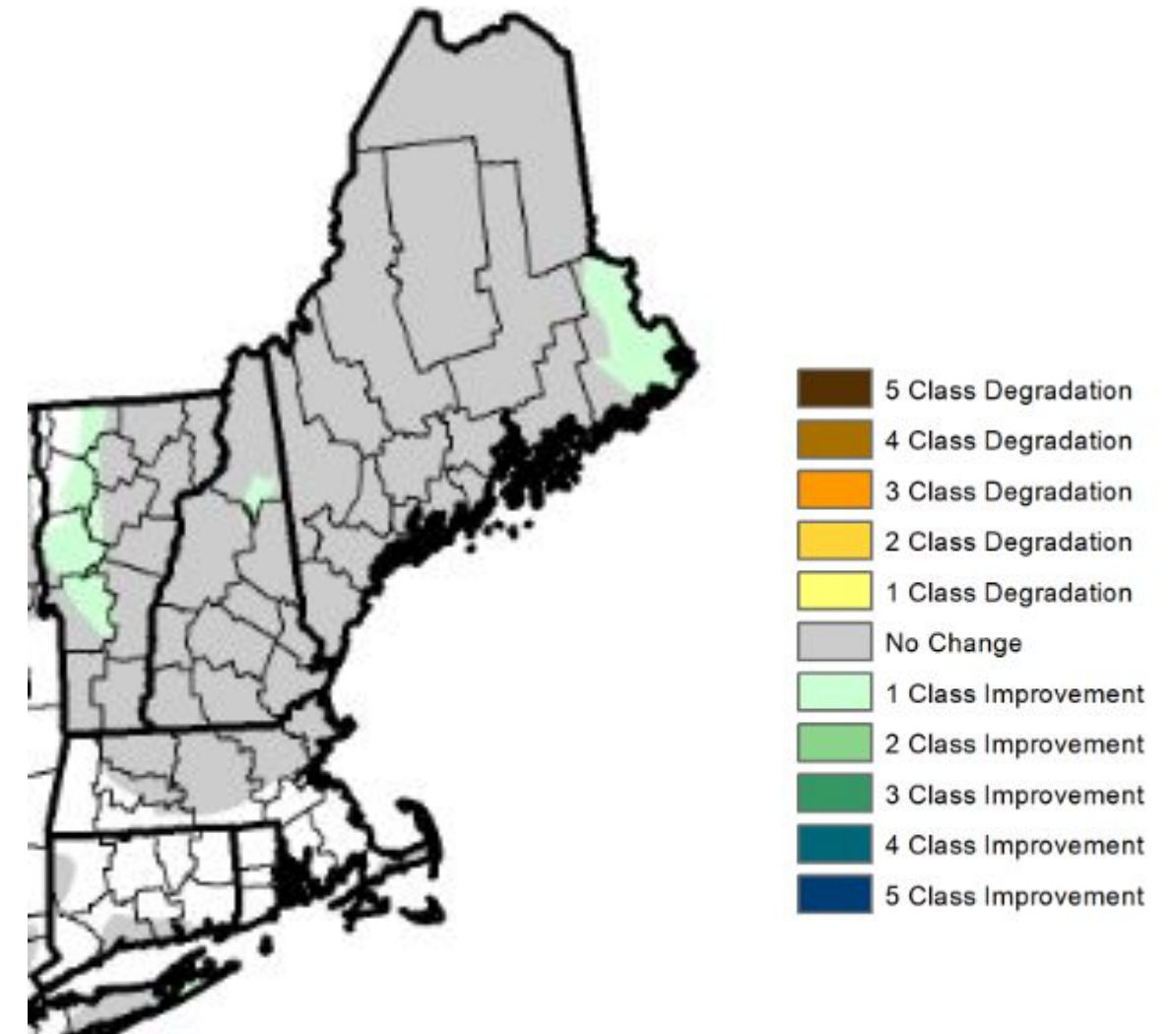
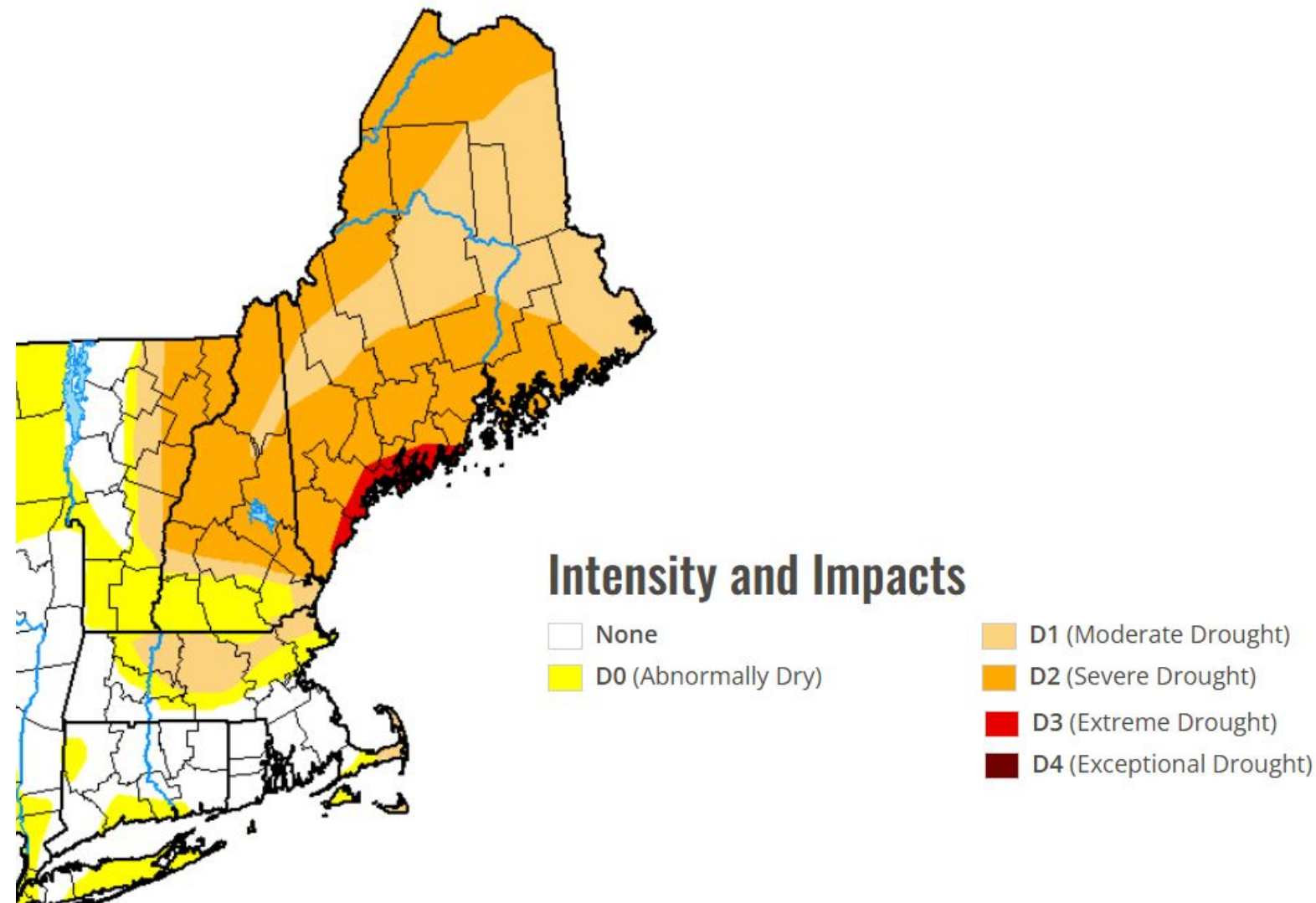




# Drought Monitor

December 8, 2025  
9:41 AM

As of December 2. Next update on Thursday. Refer to the [Drought Monitor](#) website for more information







# 8-14 Day Outlook

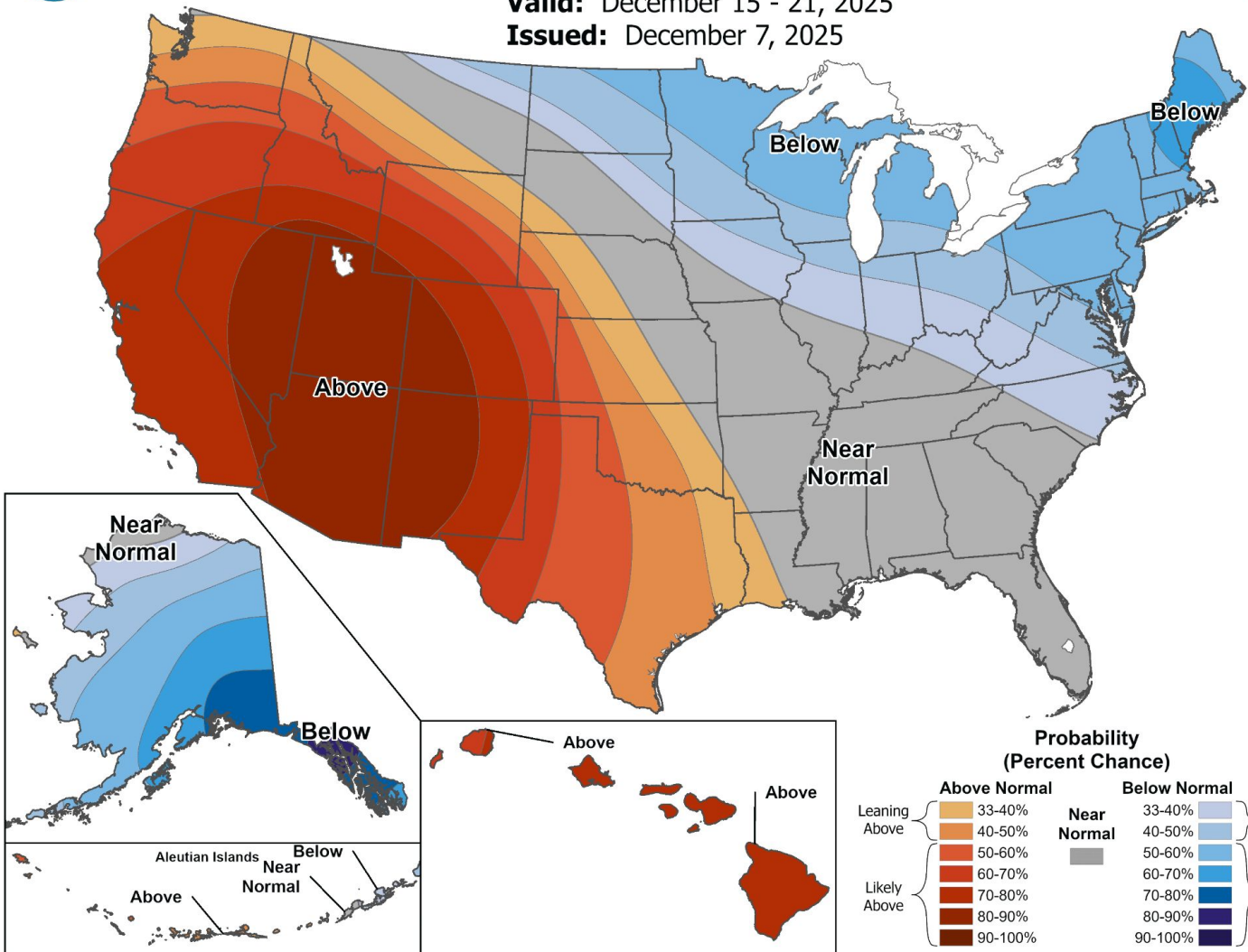
December 8, 2025  
9:41 AM

Monday, December 15 - Sunday, December 21



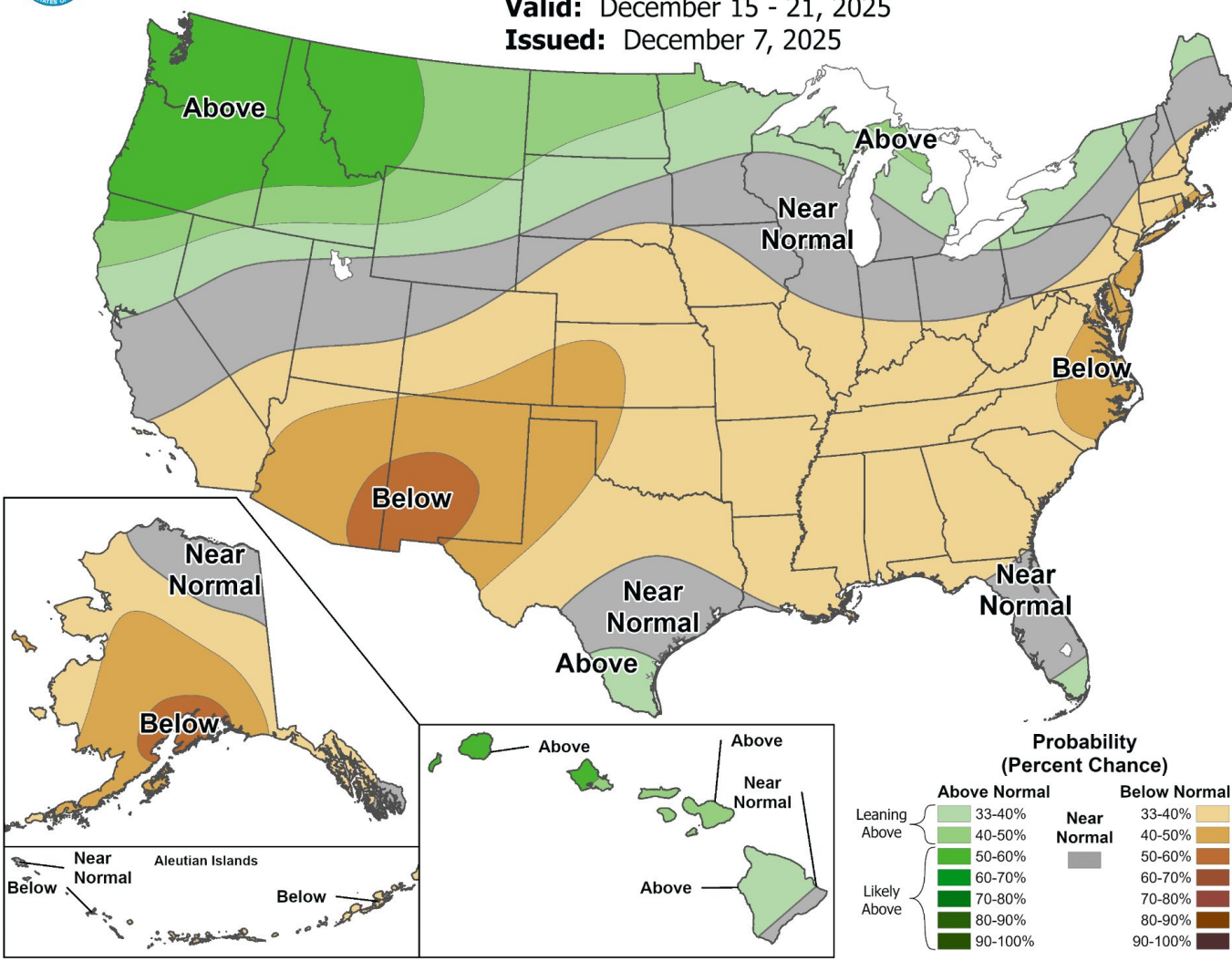
## 8-14 Day Temperature Outlook

Valid: December 15 - 21, 2025  
Issued: December 7, 2025



## 8-14 Day Precipitation Outlook

Valid: December 15 - 21, 2025  
Issued: December 7, 2025







## Key Messages:

- **Colder than normal temperatures this week.**
- **Series of fast-moving, mainly weak systems midweek thru Monday:**
  - **Tue Night to Wed (mainly rain, higher-elevation light snow to rain)**
  - **Late Fri Night into Sat (light snow to coastal light snow to rain)**
  - **Around next Mon night into next Tue**





# NWS Boston - Information Links

December 8, 2025  
9:41 AM

- [Graphical Hazardous Weather Outlook](#)
- [EM Briefing Page](#)
- [Coastal Flood Threat Display](#)
- [Tropical Weather](#)
- [Winter Weather](#)
- [Rivers / Tide Gauges \(National Water Prediction Service\)](#)



508-622-3280  
(unlisted 24/7)



National Oceanic and  
Atmospheric Administration  
U.S. Department of Commerce

**National Weather Service  
Boston / Norton, MA**