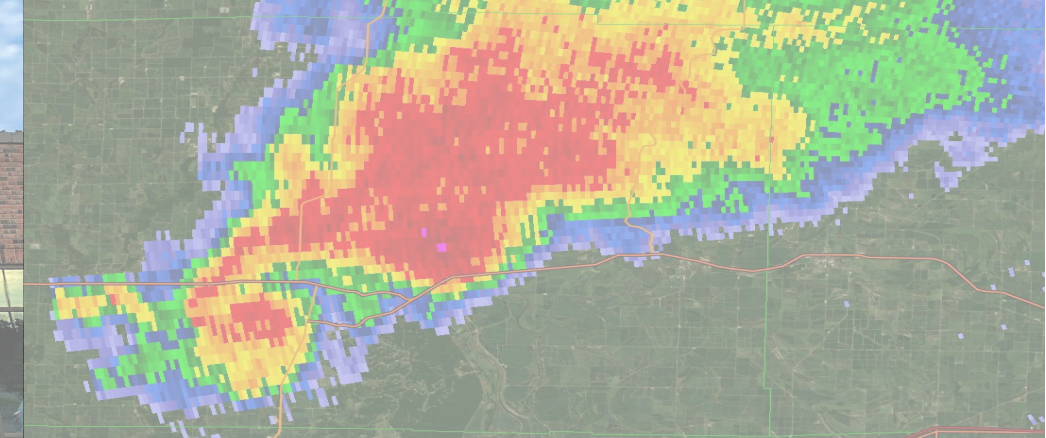




National Weather Service

Boston, MA

Emergency Management Briefing
Winter Storm Jan 25-26th
Sunday 1/25/2026 1:30 PM





Incoming Cold and Late Weekend Storm

January 25, 2026
1:30 PM

For Southern New England

Decision Support Briefing:

Key Messages

- High Impact Winter Storm **NOW** into Monday.
 - Difficult travel, especially this afternoon through early Monday (early Mon commute).



New Information/Updates

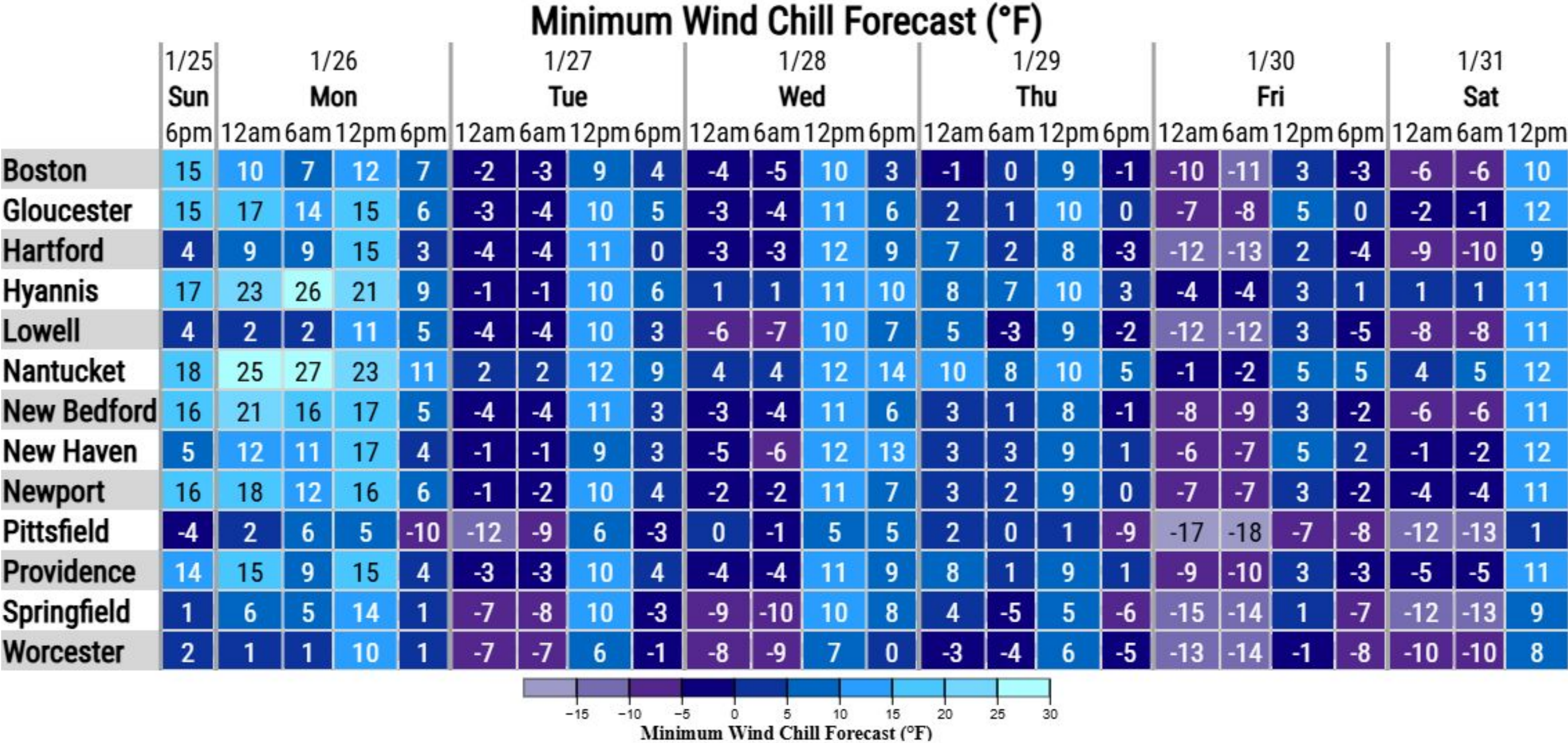
- Totals remain unchanged from this morning. Higher amounts expected in northeast MA, the higher terrain of central MA, and Berkshires.
- Biggest area of uncertainty remains totals along the south coast where mixed precip likely reduces snow totals.
- Next Briefing: Monday morning 1/26.





Forecast Minimum Wind Chills Through The Week

January 25, 2026
1:30 PM





Total snow accumulation from this morning through Monday afternoon/evening

LOW

MEDIUM

HIGH

- Snow has arrived across southern New England and amounts have started accumulating.
- Timing of heaviest snow: 3 PM - 1 AM
- Light to moderate snow lingers through much of Mon, especially central and eastern MA

LOW

MEDIUM

HIGH

- High confidence (80-100%) for a foot or more of snow, especially north of CT/RI border.
- **Lower confidence in amounts for RI and SE MA including Cape and Islands due to potential for snow mixing with or changing to sleet.**

LOW

MEDIUM

HIGH

Travel will be difficult, especially late Sun and Sun evening when snowfall accumulation rates will be highest. Travel impacts continue through Mon.



**National Oceanic and
Atmospheric Administration**
U.S. Department of Commerce

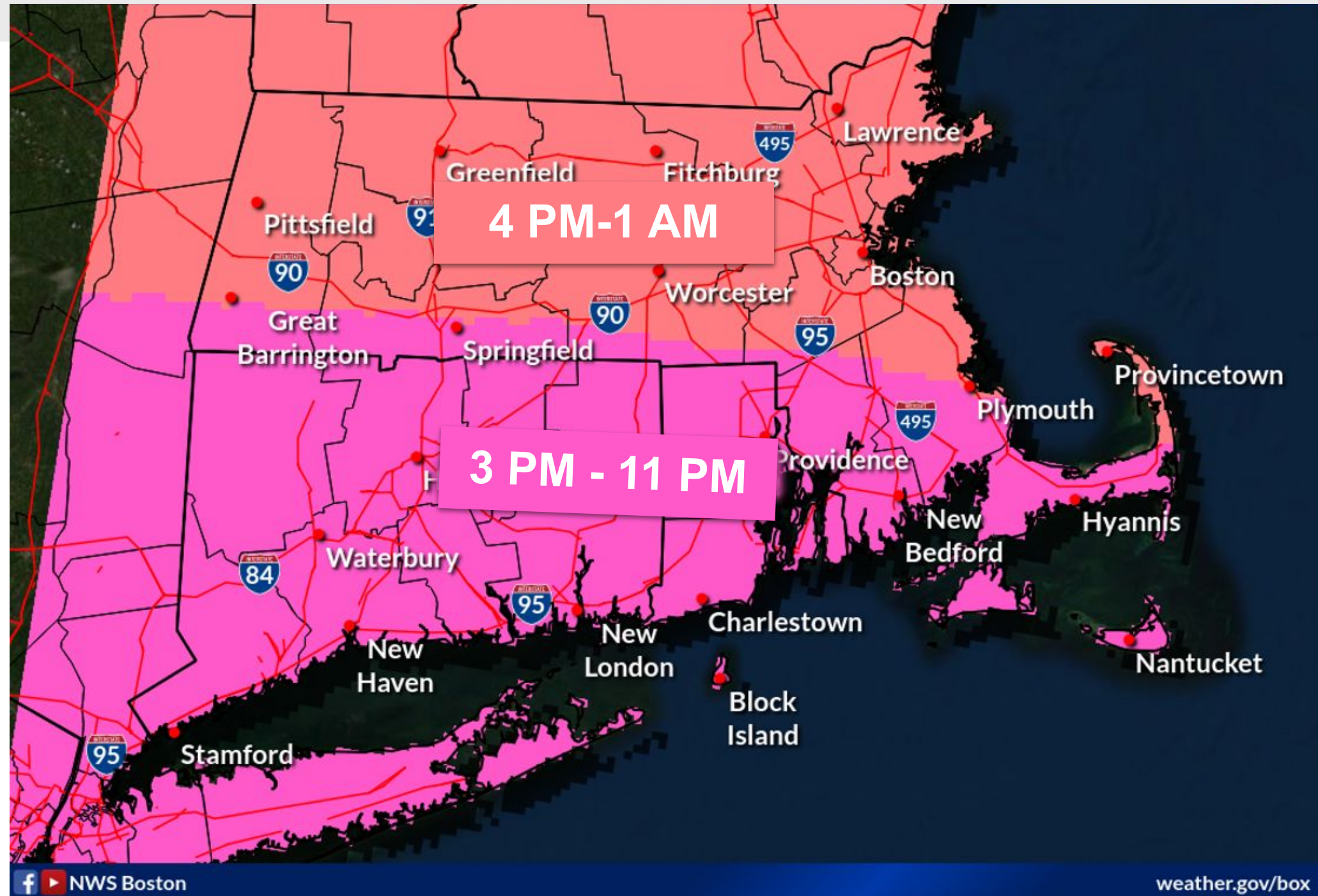
**National Weather Service
Boston / Norton, MA**



Timing of Heaviest Snowfall (1-2"/hr, possibly 3"/hr)

January 25, 2026
1:30 PM

Snowfall rates up to 2"/hr (and possibly 3"/hr) will likely occur in a 3 hour window within this time period

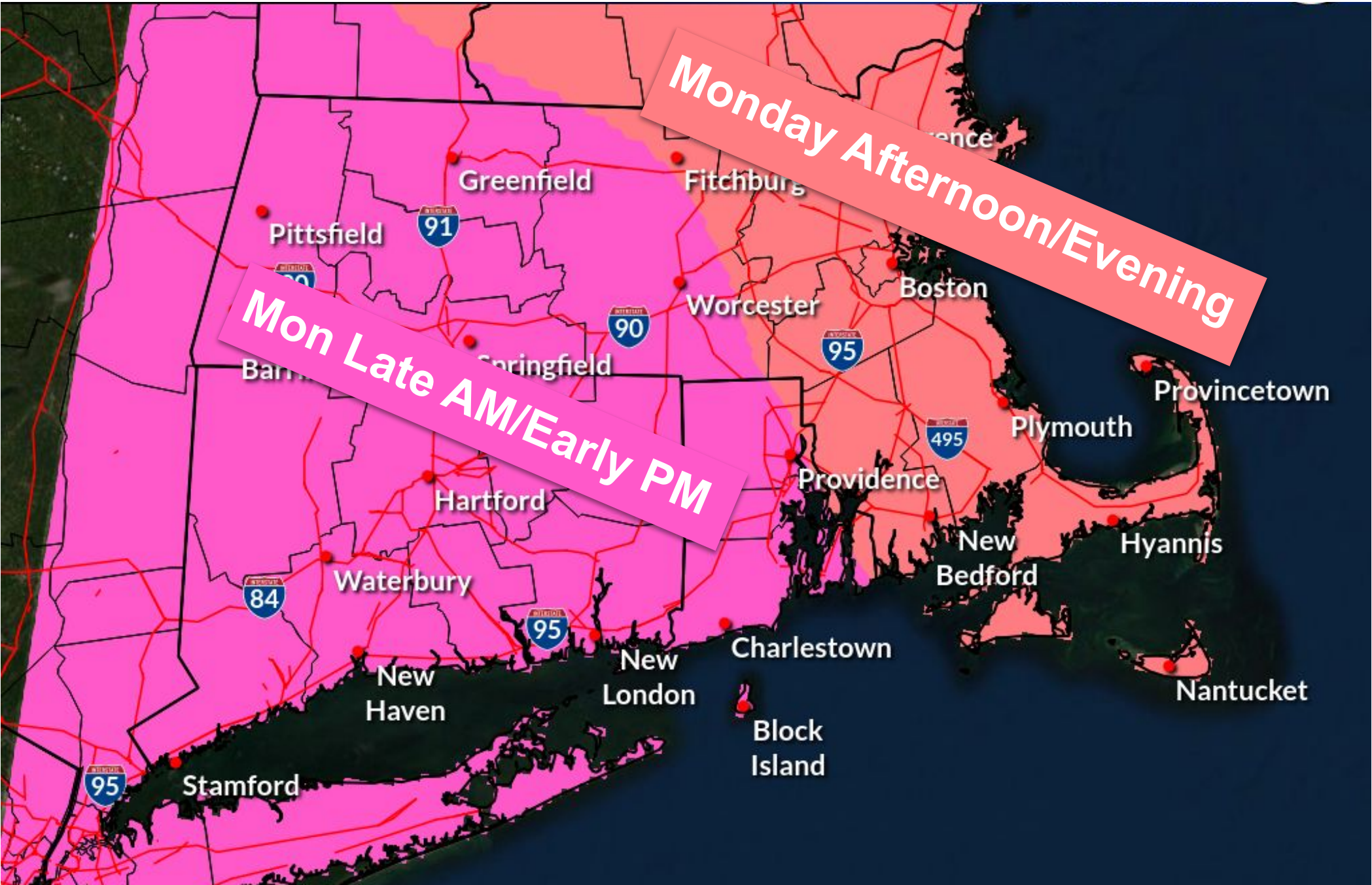




Snow Ending Time

January 25, 2026
1:30 PM

Snow becomes much lighter as it tapers off through the day on Monday

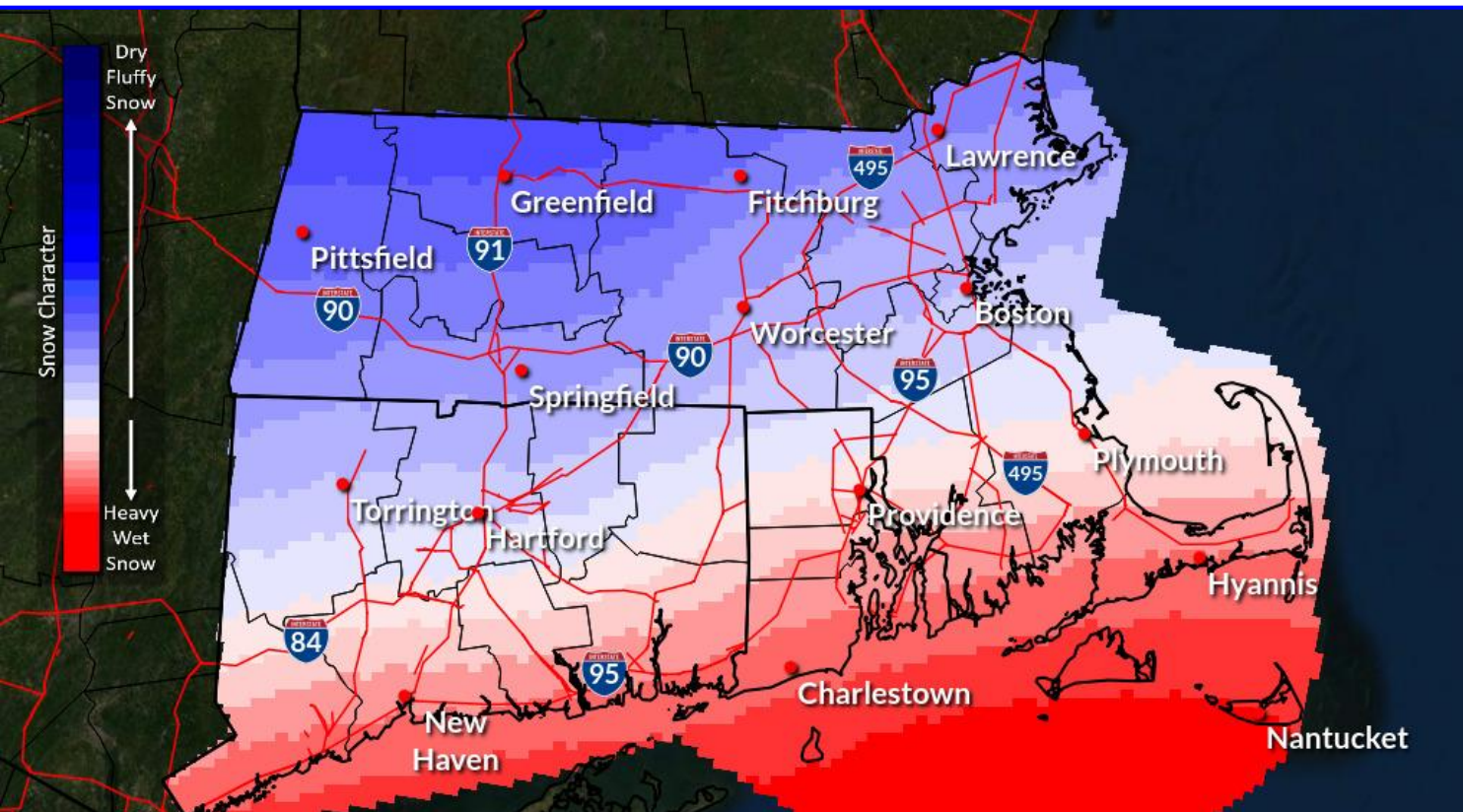




January 25, 2026
1:30 PM

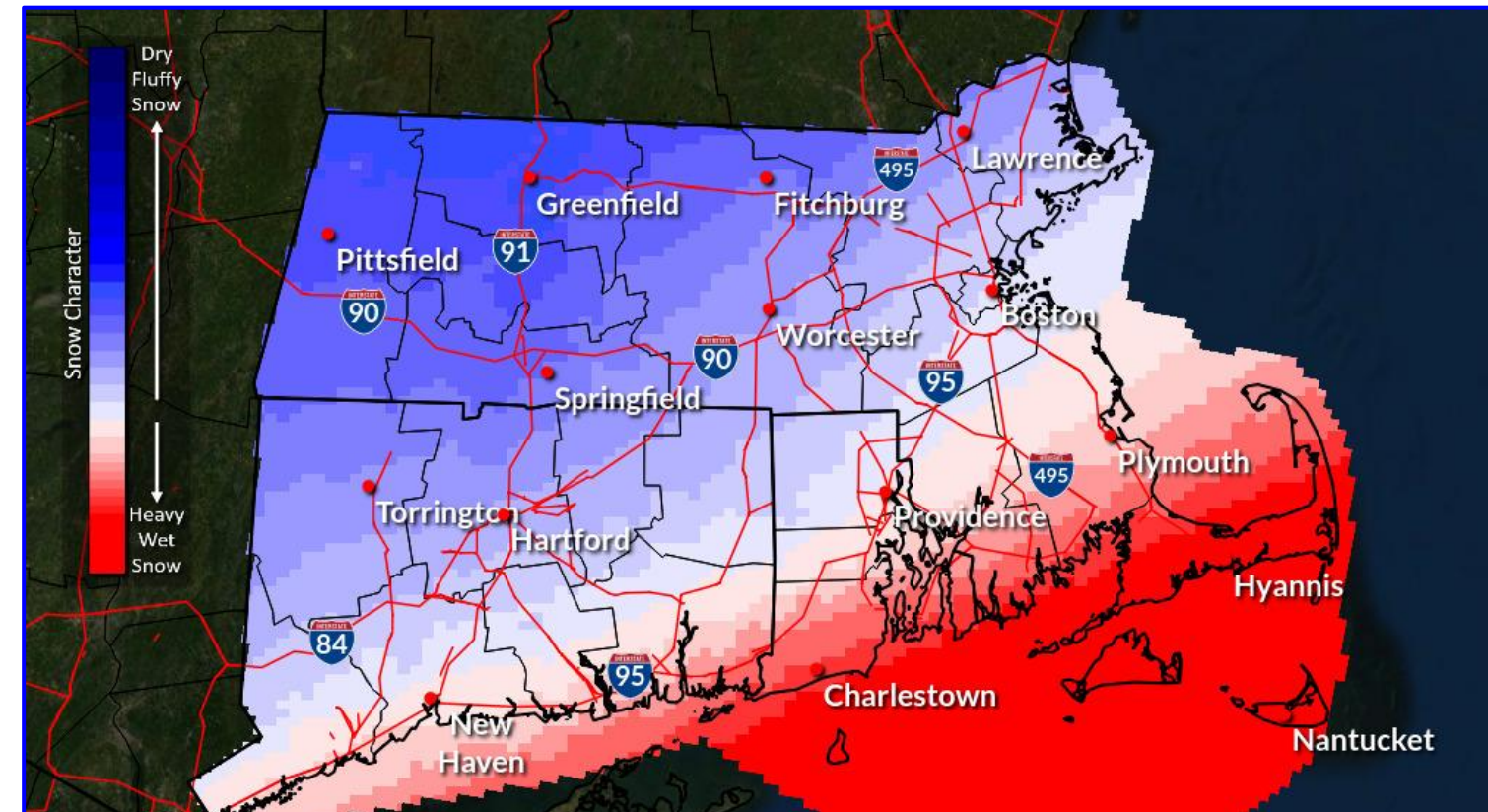
Snow Character (Wet or Dry)

7 PM Sun through 1 AM Monday



Leaning drier and fluffier except over the south coast, including the Cape and Islands.

1 AM Mon through 7 AM Monday



Becoming more "wet" toward end of the storm, especially south.



National Oceanic and
Atmospheric Administration
U.S. Department of Commerce

National Weather Service
Boston / Norton, MA

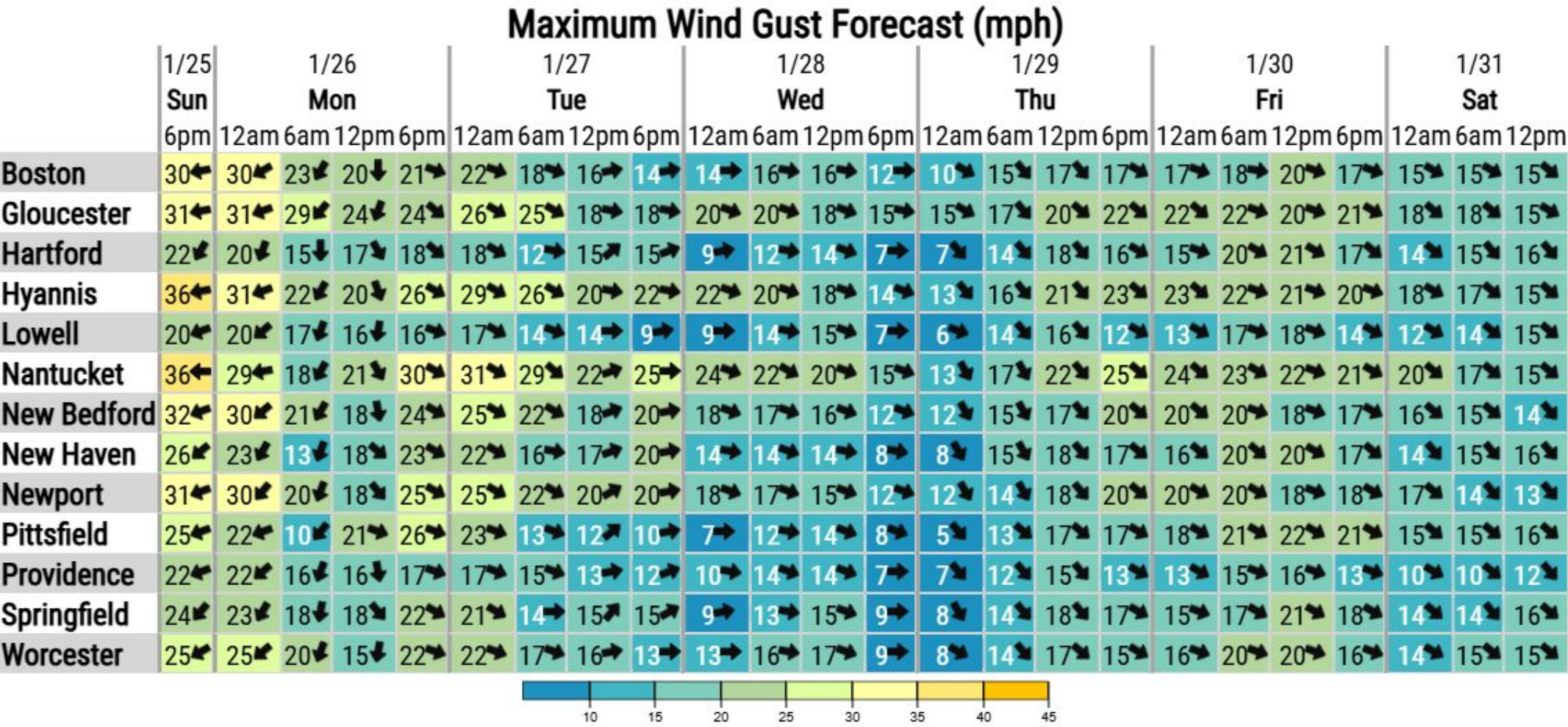


Maximum Wind Gust Forecast

January 25, 2026
1:30 PM

Key Messages:

- Period of gusty winds tonight-early Monday AM.
 - Brief period of near-blizzard conditions possible near coast.



Created: 1 pm EST Sun 1/25/2026 | Values are maximums over the period beginning at the time shown.

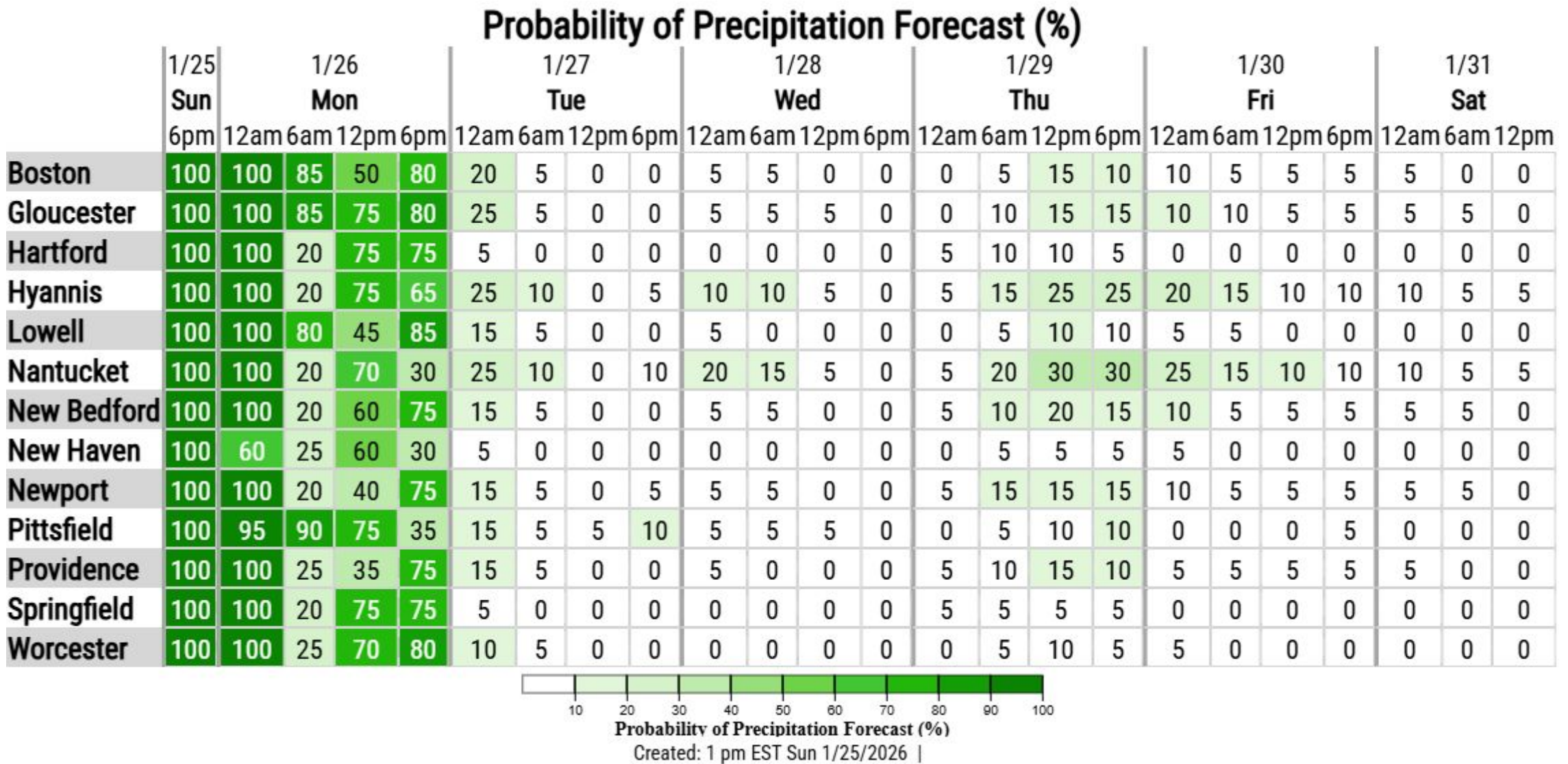




Precipitation Chances

January 25, 2026
1:30 PM

Low chances for precipitation late-week, otherwise mainly dry this week after the storm.

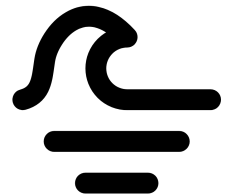


Gale Warning

Sunday Evening through Monday Morning



- Massachusetts and Rhode Island Coastal Waters



SEAS

- Potential for up to 15 FT for east

WIND

- Up to 40 kts outer waters

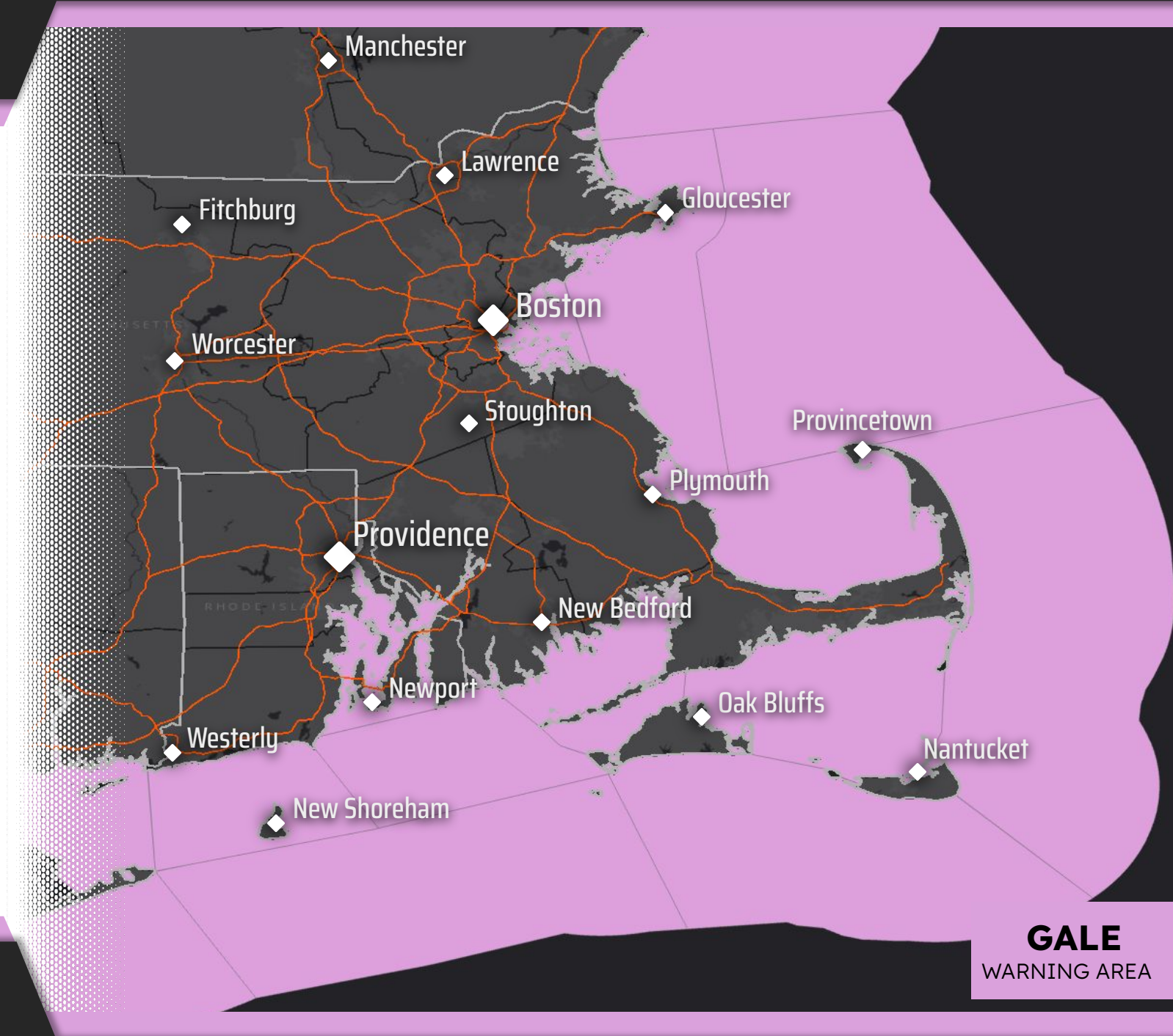


- Wind and wave conditions will be hazardous for small craft.
- Inexperienced mariners, especially those operating smaller vessels, should avoid navigating in these conditions.



NATIONAL WEATHER SERVICE - BOSTON

Follow:   @NWSBoston



Updated: January 25, 2026



Contact and Next Briefing Information

January 25, 2026
1:30 PM

For Southern New England



Next Email Briefing

→ By 4 AM Monday 1/26.



Contact Information

Web

→ weather.gov/box

Phone

→ (508) 622-3280

Email

→ box.operations@noaa.gov

Facebook

→ www.facebook.com/NWSBoston

X

→ [@NWSBoston](https://twitter.com/NWSBoston)

