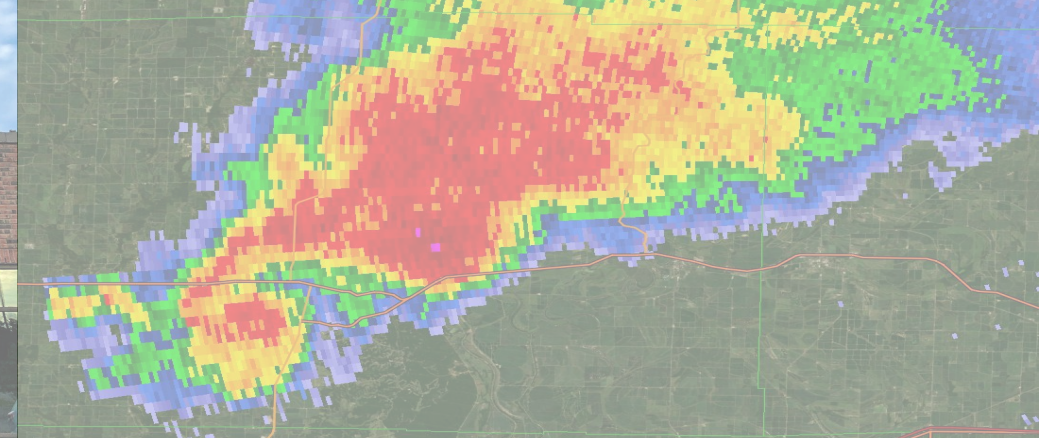




National Weather Service

Boston, MA

Emergency Management Briefing
Winter Storm Jan 25-26th
Monday 1/25/2026 2:00 AM





Incoming Cold and Late Weekend Storm

January 26, 2026
2:09 AM

For Southern New England

Decision Support Briefing:

Key Messages

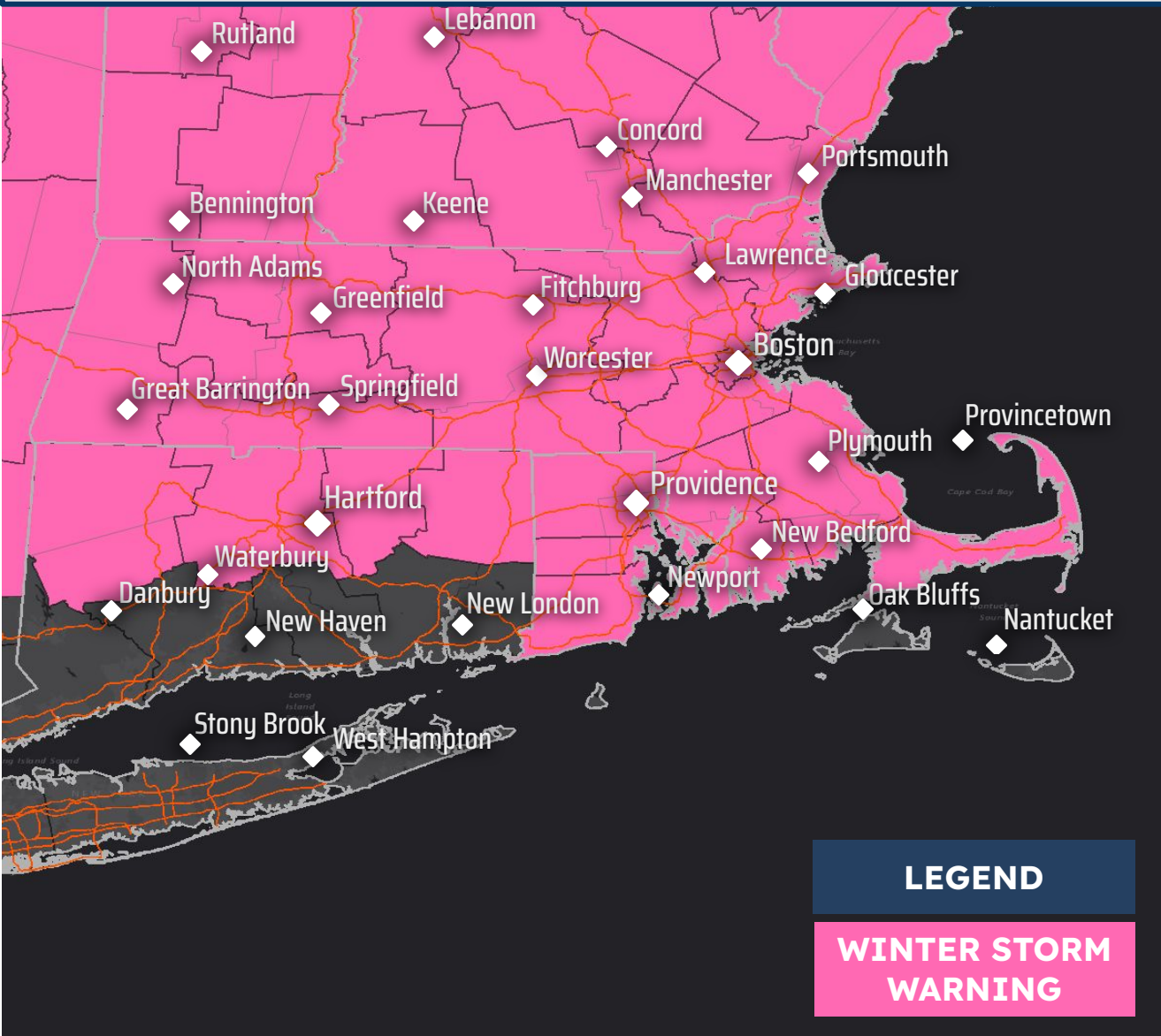
- Winding down behind the storm through Monday.
 - Difficult travel, especially early Monday (early Mon commute).

INFO

New Information/Updates

- We've added:
 - ◆ Observed snowfall through 1 AM Mon.
 - ◆ Additional snowfall expected 1 AM Mon - 1 AM Tue.
- Winter Storm Warning Ended for Coastal CT and the Islands

Current Headlines



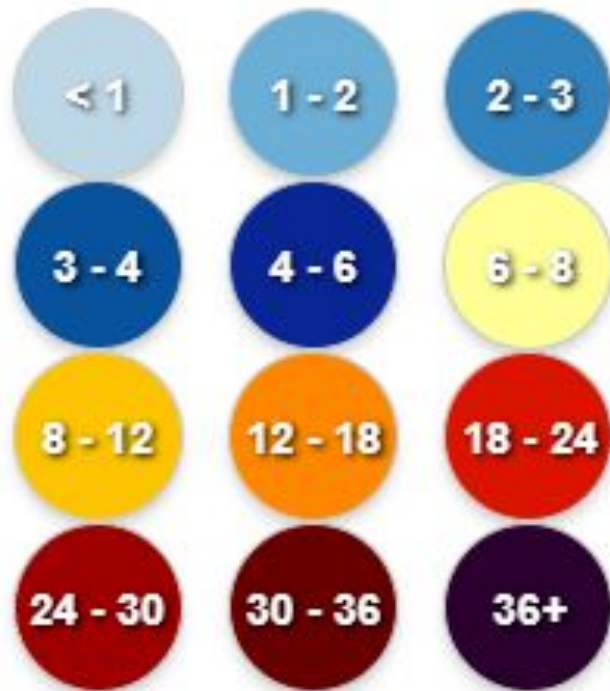


Observed Snowfall Through 1 AM Monday

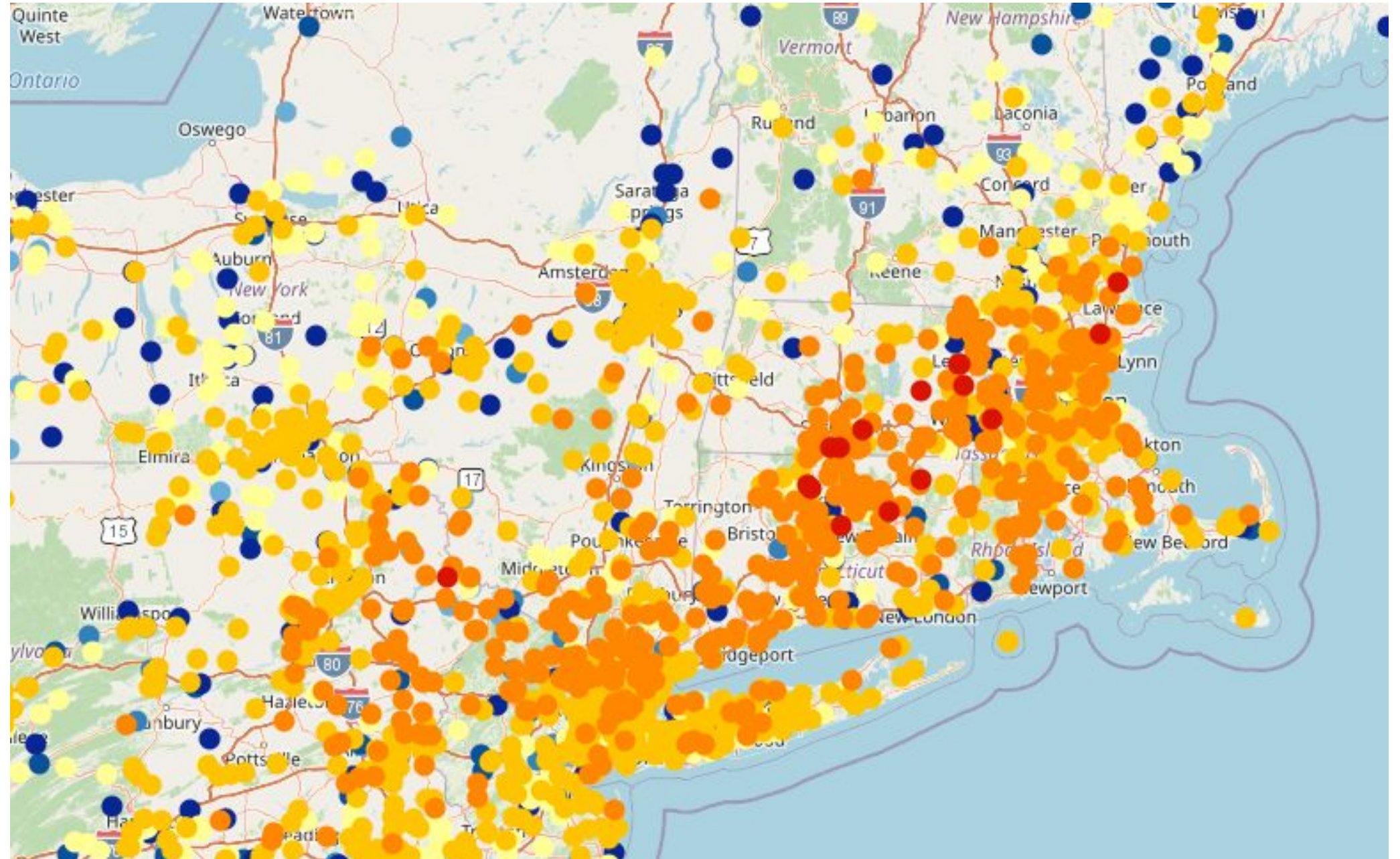
January 26, 2026
2:09 AM

Light snow continues through the day on Monday adding to these totals

Snowfall Legend Measured in inches



[Interactive Snowfall
Report Map Link](#)





Additional Snow Accumulation 1AM Mon - 1AM Tue

January 26, 2026
2:09 AM

Timing Confidence

LOW

MEDIUM

HIGH

- Light to moderate snow lingers through much of Mon, especially central and eastern MA

Snow Amounts Confidence

LOW

MEDIUM

HIGH

- Medium to High confidence in an additional several inches, highest over far eastern/northeastern MA.

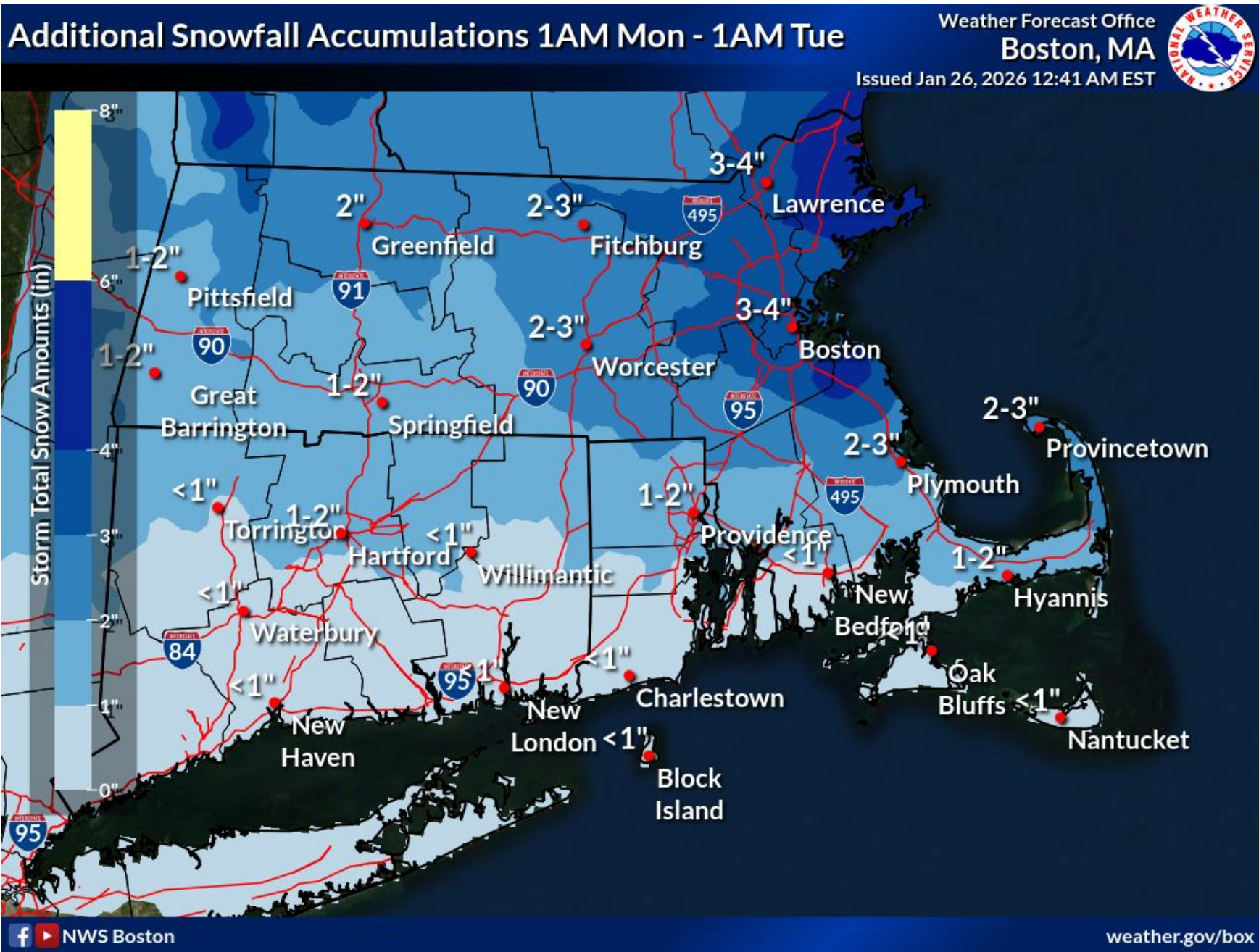
Travel Impacts Confidence

LOW

MEDIUM

HIGH

Travel will be difficult, especially Monday morning's commute.

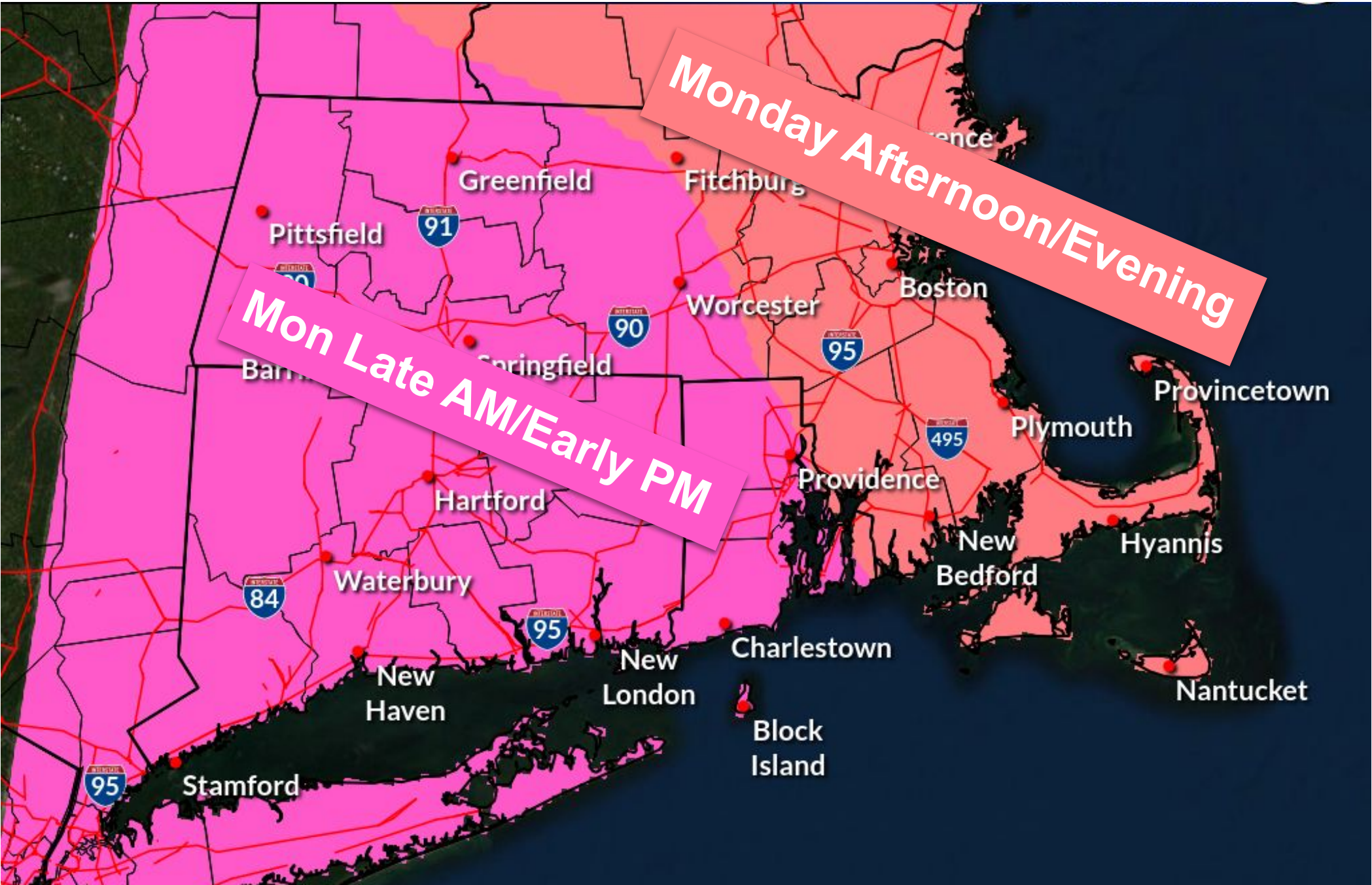




Snow Ending Time

January 26, 2026
2:09 AM

Snow is lighter as it tapers off through the day on Monday





Forecast Minimum Wind Chills Through The Week

January 26, 2026
2:09 AM

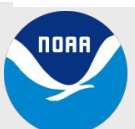
Minimum Wind Chill Forecast (°F)

	1/26 Mon				1/27 Tue				1/28 Wed				1/29 Thu				1/30 Fri				1/31 Sat				2/1 Sun			
	12am	6am	12pm	6pm	12am	6am	12pm	6pm	12am	6am	12pm	6pm	12am	6am	12pm	6pm	12am	6am	12pm	6pm	12am	6am	12pm	6pm	12am	6am	12pm	6pm
Boston	10	7	12	7	-2	-3	9	4	-4	-5	10	3	-1	0	9	-1	-10	-11	3	-3	-6	-6	10	3	-4	-4	14	13
Gloucester	17	14	15	6	-3	-4	10	5	-3	-4	11	6	2	1	10	0	-7	-8	5	0	-2	-1	12	7	1	1	14	15
Hartford	9	9	15	3	-4	-4	11	0	-3	-3	12	9	7	2	8	-3	-12	-13	2	-4	-9	-10	9	-1	-8	-8	14	12
Hyannis	23	26	21	9	-1	-1	10	6	1	1	11	10	8	7	10	3	-4	-4	3	1	1	1	11	9	7	7	16	15
Lowell	2	2	11	5	-4	-4	10	3	-6	-7	10	7	5	-3	9	-2	-12	-12	3	-5	-8	-8	11	2	-6	-7	15	13
Nantucket	25	27	23	11	2	2	12	9	4	4	12	14	10	8	10	5	-1	-2	5	5	4	5	12	12	10	11	17	18
New Bedford	21	16	17	5	-4	-4	11	3	-3	-4	11	6	3	1	8	-1	-8	-9	3	-2	-6	-6	11	4	-3	-3	15	12
New Haven	11	16	16	4	0	-1	8	1	-6	-7	11	13	10	3	9	1	-7	-8	2	-1	-3	-4	9	5	-1	-2	14	14
Newport	18	14	15	5	-2	-2	9	3	-3	-3	11	7	3	2	8	-1	-7	-8	3	-2	-5	-4	10	4	-1	-1	14	13
Pittsfield	1	6	5	-10	-12	-9	6	-3	0	-1	5	5	2	0	0	-9	-17	-18	-8	-8	-12	-13	1	-4	-10	-10	7	3
Providence	15	9	15	4	-3	-3	10	4	-4	-4	11	9	8	1	9	1	-9	-10	3	-3	-5	-5	11	2	-4	-5	16	12
Springfield	6	5	14	1	-7	-8	10	-3	-9	-10	10	8	4	-5	5	-6	-15	-14	1	-7	-12	-13	9	-4	-12	-13	12	8
Worcester	1	1	10	1	-7	-7	6	-1	-8	-9	7	0	-3	-4	6	-5	-13	-14	-1	-8	-10	-10	8	-2	-8	-9	13	9



Minimum Wind Chill Forecast (°F)

Created: 1 am EST Mon 1/26/2026 | Values are minimums over the period beginning at the time shown.



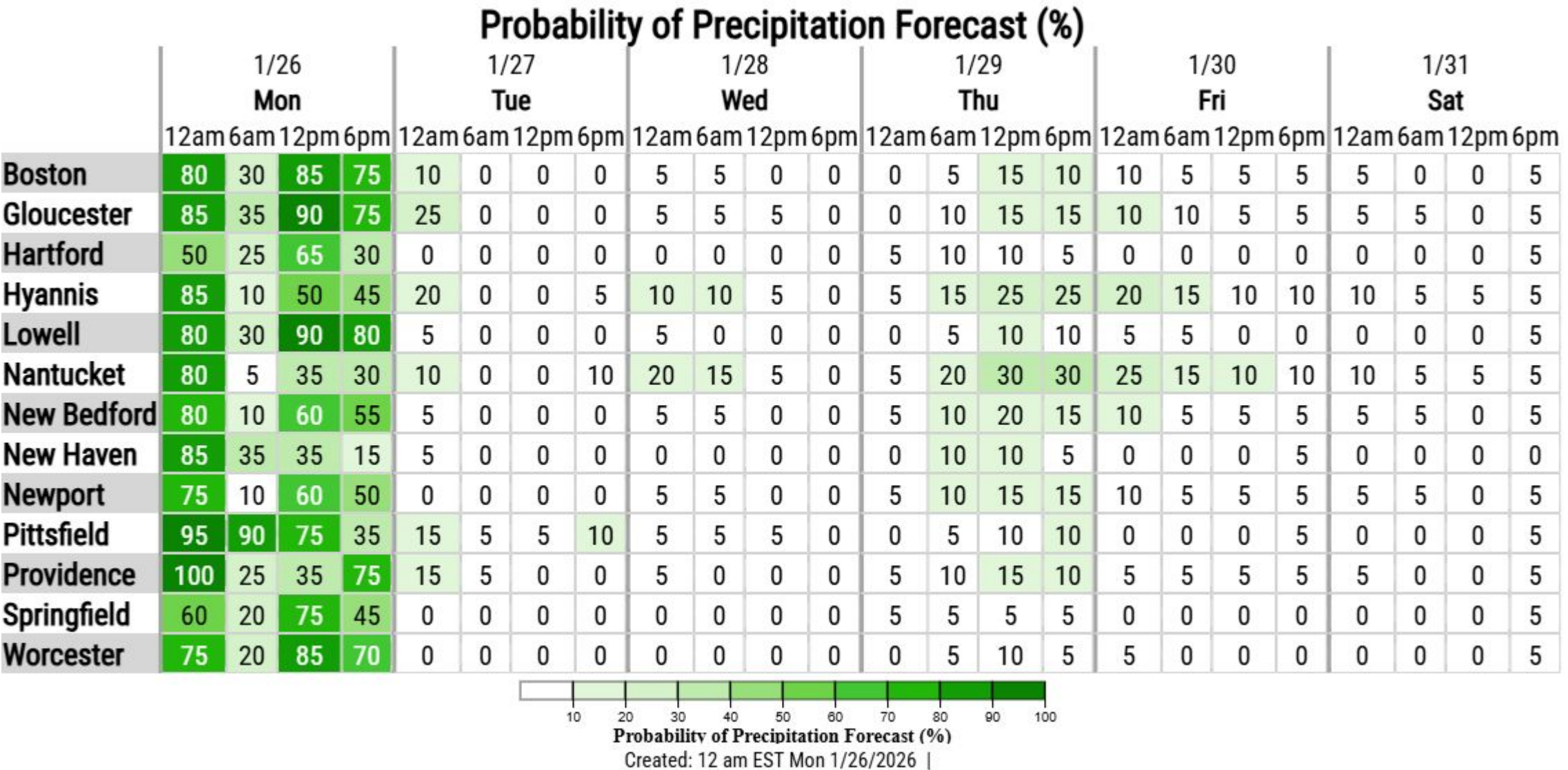
National Oceanic and
Atmospheric Administration
U.S. Department of Commerce

National Weather Service
Boston / Norton, MA



Precipitation Chances

Low chances for precipitation late-week, otherwise mainly dry this week after the storm.





Contact and Next Briefing Information

January 26, 2026
2:09 AM

For Southern New England



Next Email Briefing

→ If needed, Monday afternoon.



Contact Information

Web

→ weather.gov/box

Phone

→ (508) 622-3280

Email

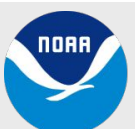
→ box.operations@noaa.gov

Facebook

→ www.facebook.com/NWSBoston

X

→ [@NWSBoston](https://twitter.com/NWSBoston)



National Oceanic and
Atmospheric Administration
U.S. Department of Commerce

**National Weather Service
Boston / Norton, MA**