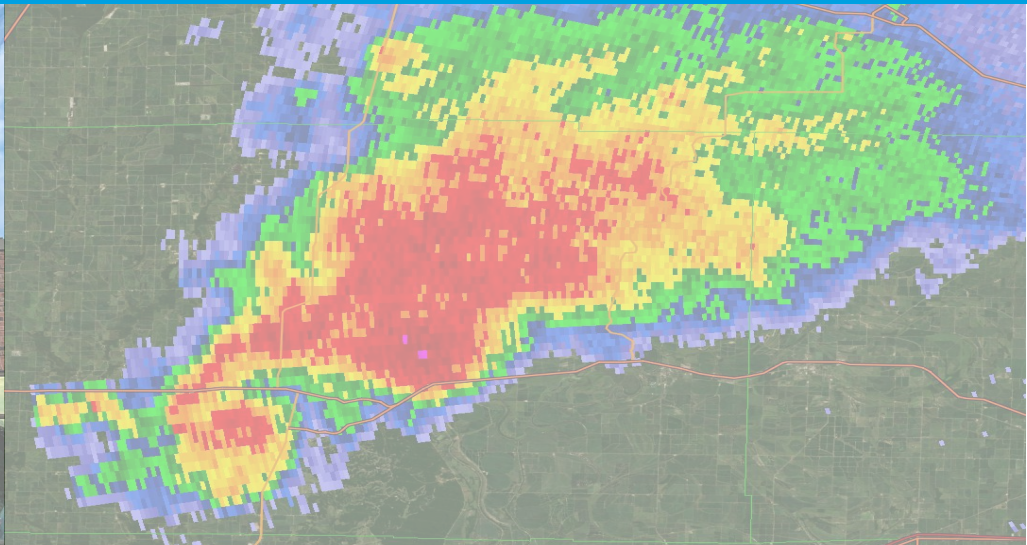


# National Weather Service Boston, MA

## Emergency Management Briefing







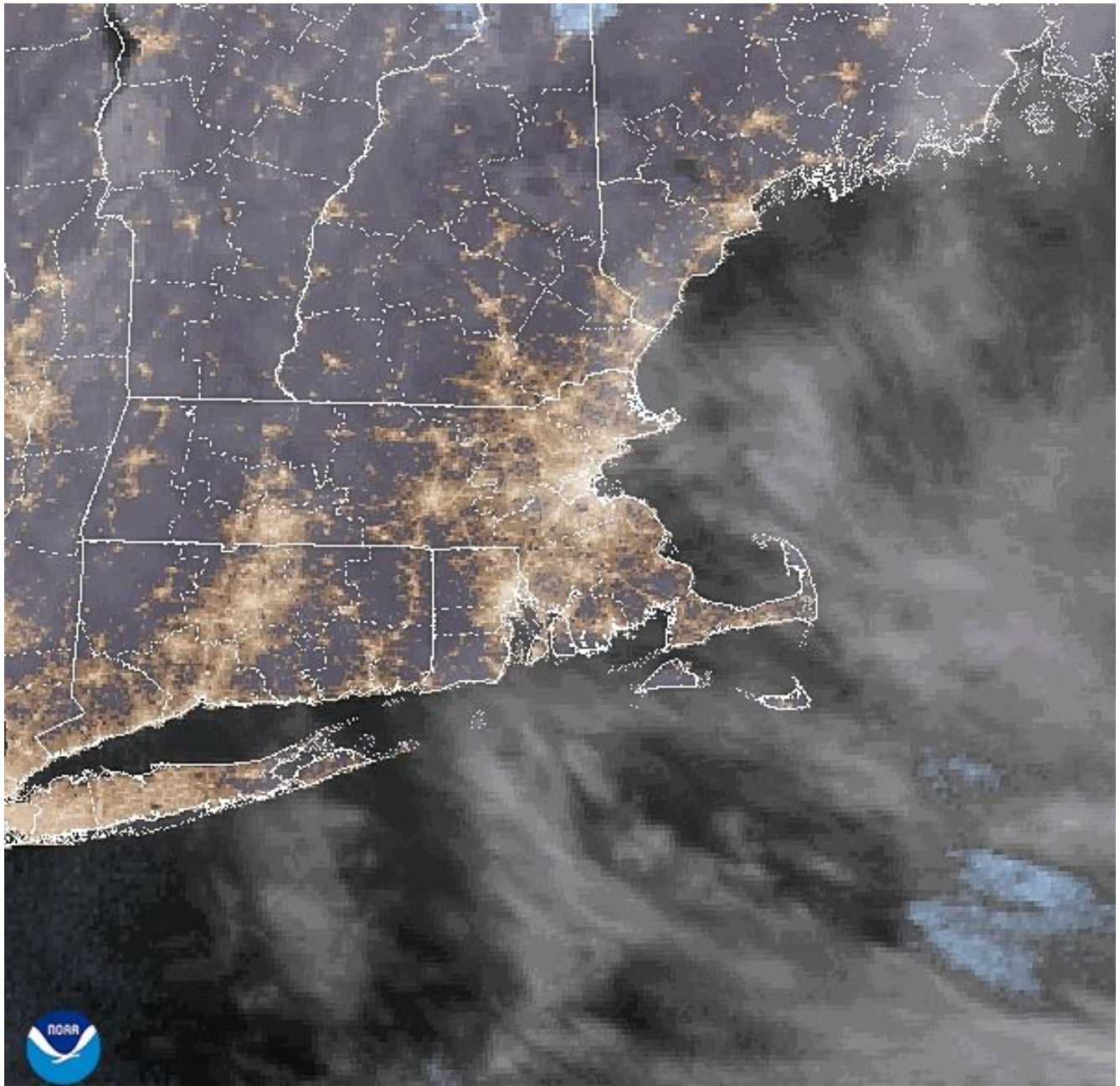
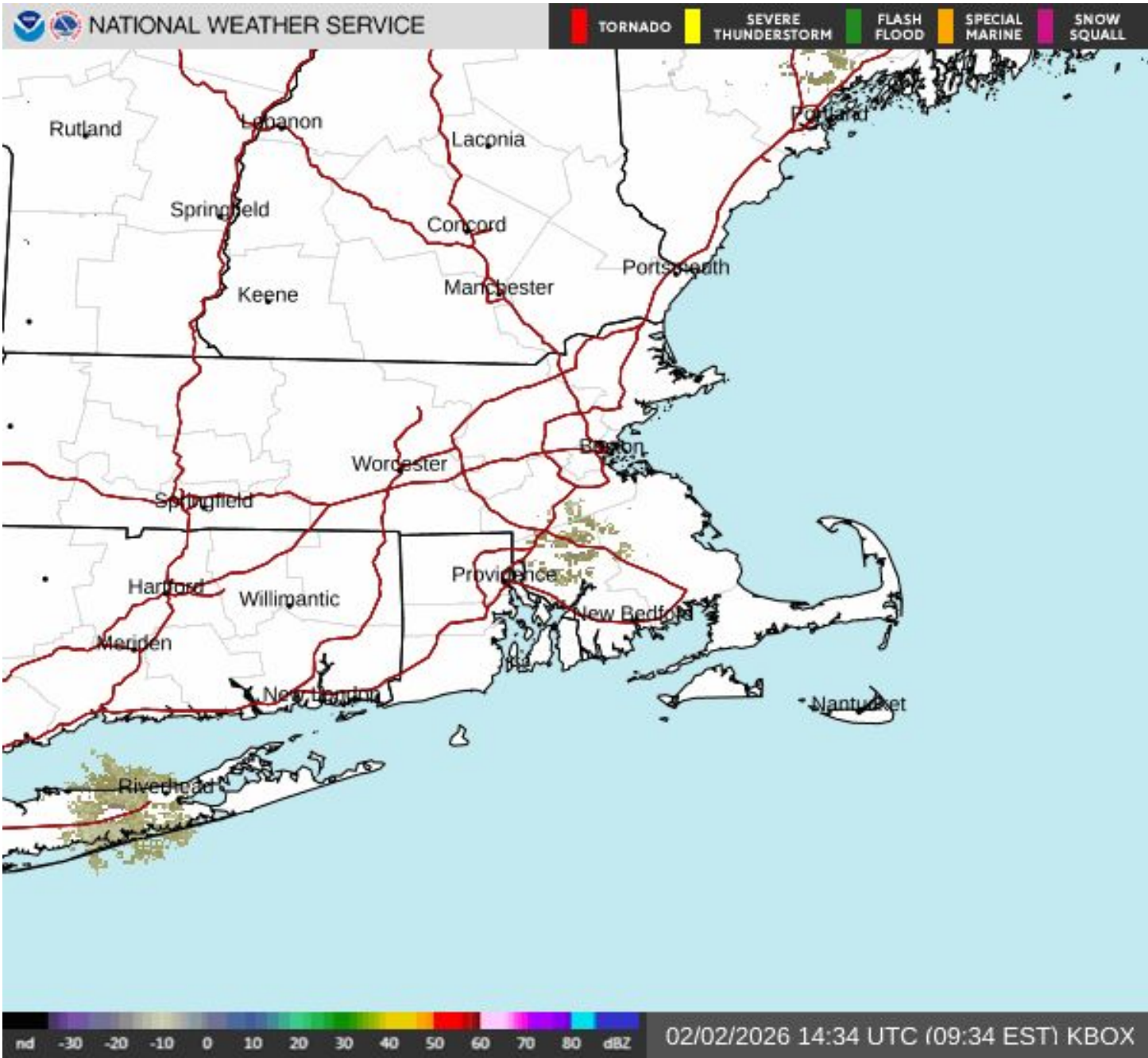
## Key Messages:

- **Dry and “warmer” this week**
  - Highs in the upper 20s and mid 30s
- **Gusty winds and deep arctic air arrives this weekend**
  - Dangerous wind chills likely
  - Heavy freezing spray and Gale force winds likely
- **Minor snow accumulations (up to a few inches) possible from a weak storm Friday-Friday night**



# Current Radar/Satellite

February 2, 2026  
9:59 AM





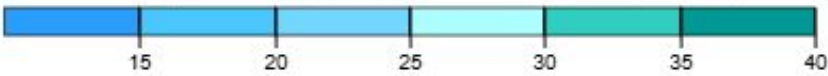


# Temperature Forecast

February 2, 2026  
9:59 AM

Maximum Temperature Forecast (°F)

	2/2 Mon	2/3 Tue	2/4 Wed	2/5 Thu	2/6 Fri	2/7 Sat	2/8 Sun	2/9 Mon
Block Island	29	32	31	28	31	28	19	24
Boston	29	31	32	28	29	24	17	23
Brockton	29	32	32	27	29	22	17	23
Gloucester	29	30	31	26	29	24	17	22
Greenfield	29	31	28	26	26	18	14	21
Hartford	29	32	30	27	28	20	15	21
Hyannis	28	30	32	27	31	25	19	25
Lowell	29	32	32	27	28	21	16	22
Nantucket	29	33	32	28	33	29	22	26
New Bedford	29	31	32	28	30	23	18	24
Newport	29	32	32	28	31	26	18	24
Providence	29	32	32	28	29	23	17	23
Provincetown	30	32	34	29	31	27	23	27
Springfield	29	31	30	27	28	19	15	21
Vineyard Haven	29	32	32	28	32	26	20	26
Worcester	28	31	29	25	27	19	14	21

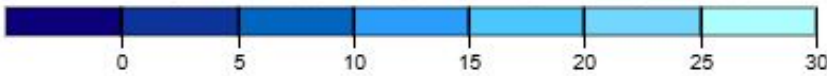


Maximum Temperature Forecast (°F)

Created: 7 am EST Mon 2/2/2026 | Values are maximums over the period beginning at the time shown.

Minimum Temperature Forecast (°F)

	2/2 Mon	2/3 Tue	2/4 Wed	2/5 Thu	2/6 Fri	2/7 Sat	2/8 Sun	2/9 Mon
Block Island	18	22	25	20	20	12	8	13
Boston	7	7	16	6	6	4	-1	5
Brockton	9	5	14	7	3	2	-2	4
Gloucester	10	10	17	10	8	5	1	7
Greenfield	2	2	8	2	1	0	-4	0
Hartford	3	3	11	3	3	3	-2	3
Hyannis	15	15	22	15	15	4	4	10
Lowell	4	4	11	7	2	2	-3	3
Nantucket	20	22	27	20	20	12	7	15
New Bedford	9	9	17	8	8	4	-1	5
Newport	14	15	21	12	11	7	3	9
Providence	7	7	16	9	4	-1	-1	4
Provincetown	22	22	26	19	20	12	8	15
Springfield	0	0	8	2	2	2	-4	0
Vineyard Haven	14	16	23	15	16	9	4	11
Worcester	5	5	11	3	3	0	-4	2



Minimum Temperature Forecast (°F)

Created: 7 am EST Mon 2/2/2026 | Values are minimums over the period beginning at the time shown.

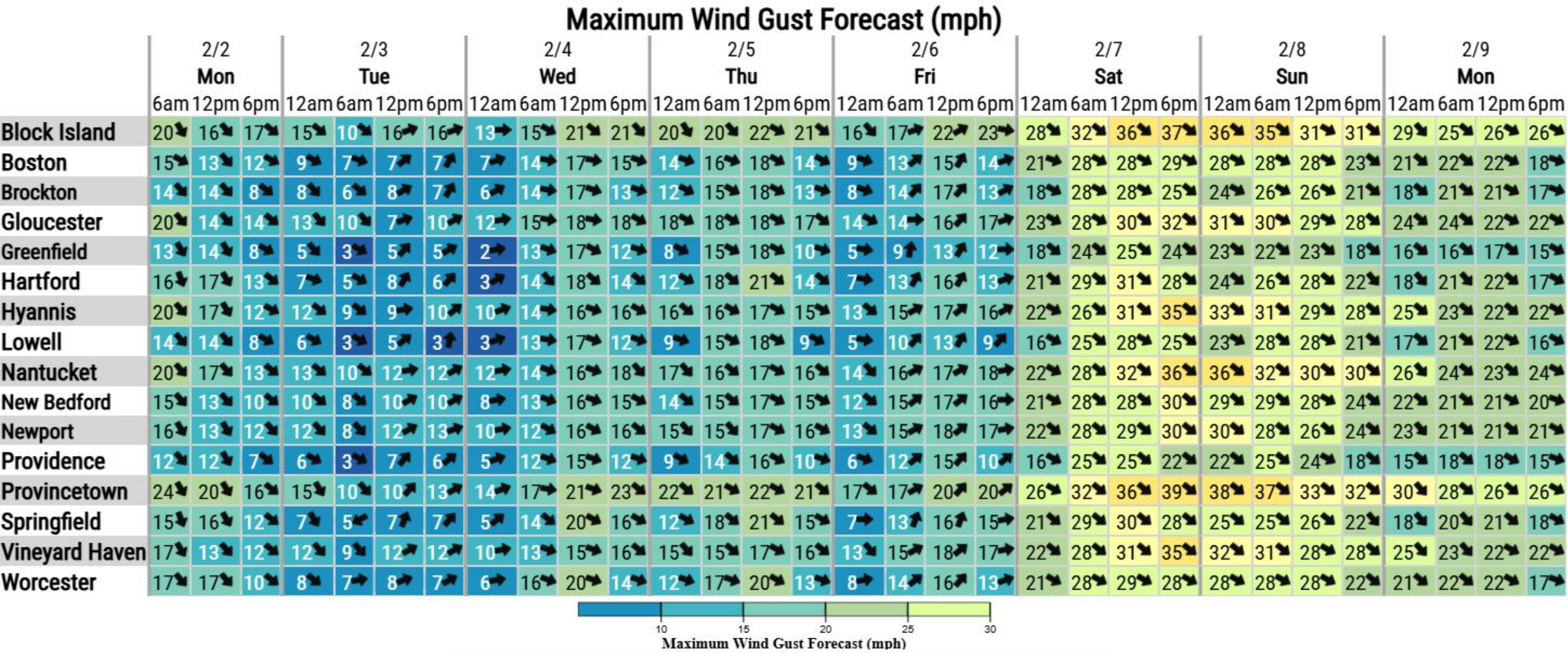






# Wind Gust Forecast

February 2, 2026  
9:59 AM



Created: 7 am EST Mon 2/2/2026 | Values are maximums over the period beginning at the time shown.



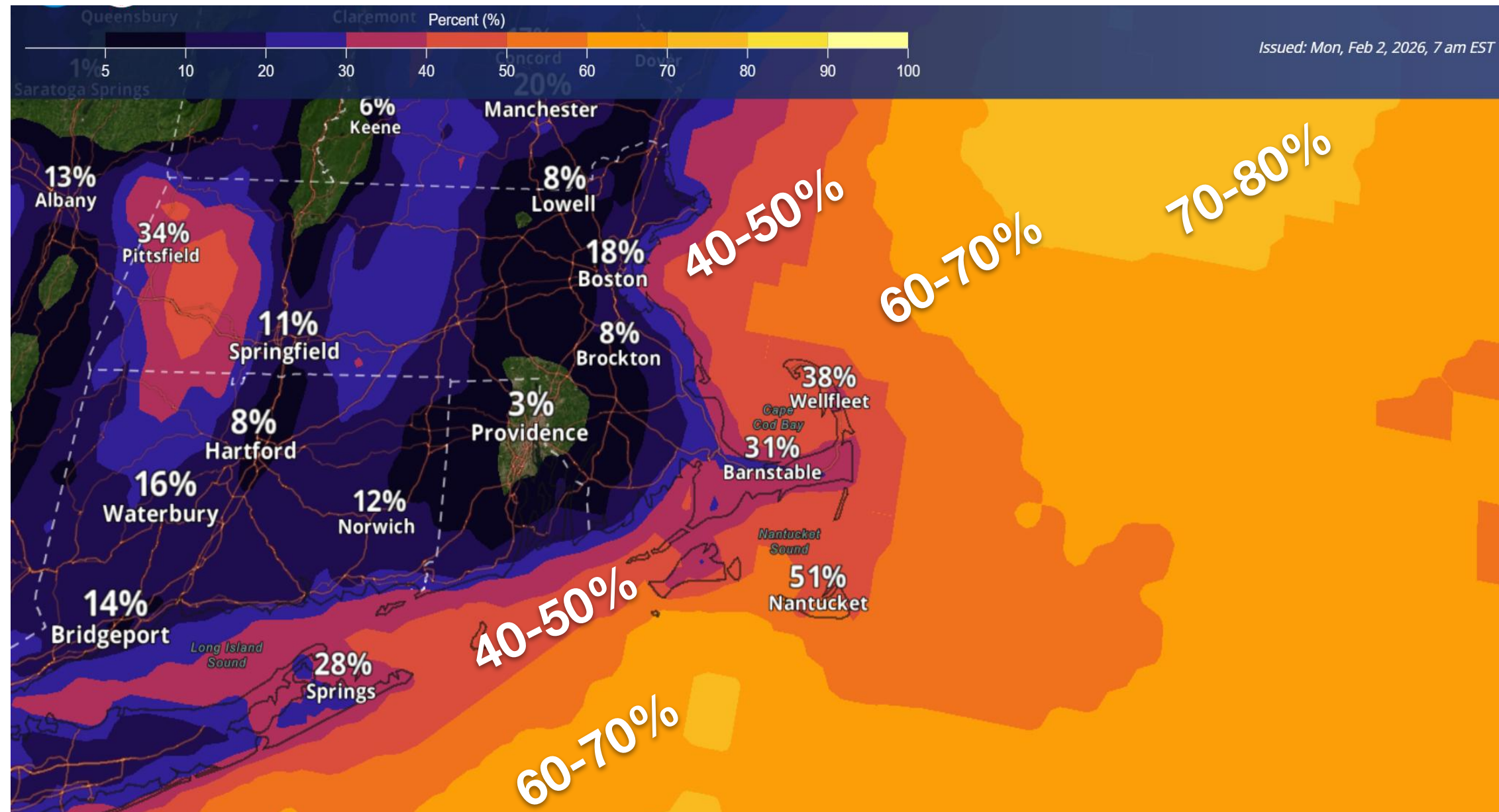


# Probability of Wind Gusts 40+mph This Weekend

February 2, 2026  
9:59 AM

**Strong winds and  
arctic air will lead to  
heavy freezing spray**

**Timing: this weekend**



National Oceanic and  
Atmospheric Administration  
U.S. Department of Commerce

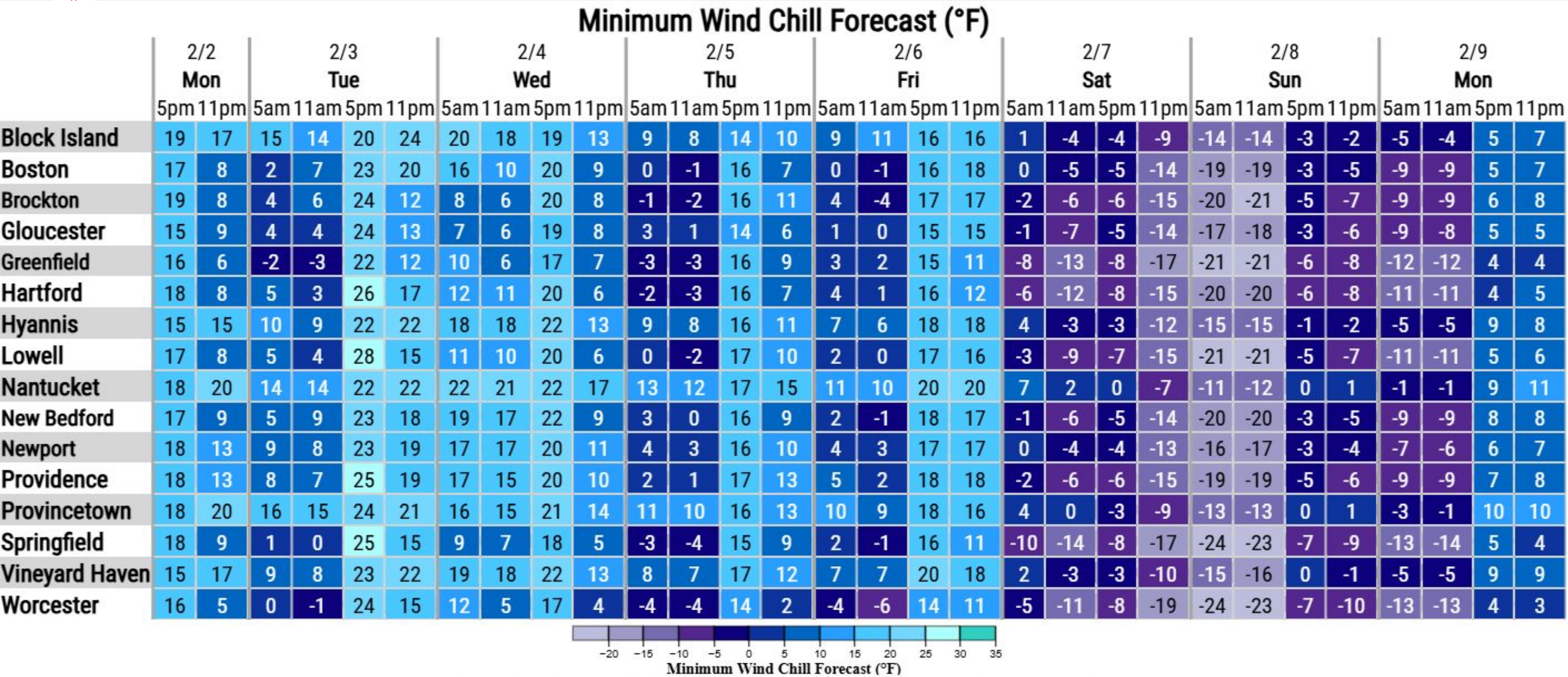
National Weather Service  
Boston / Norton, MA





# Wind Chill Forecast

February 2, 2026  
9:59 AM



Created: 2 pm UTC Mon 2/2/2026 | Values are minimums over the period beginning at the time shown.







# Weather and Precip. Probability Forecast

February 2, 2026  
9:59 AM

Weather Forecast																																					
	2/2 Mon			2/3 Tue				2/4 Wed				2/5 Thu				2/6 Fri				2/7 Sat				2/8 Sun													
	6am	12pm	6pm	12am	6am	12pm	6pm	12am	6am	12pm	6pm	12am	6am	12pm	6pm	12am	6am	12pm	6pm	12am	6am	12pm	6pm	12am	6am	12pm	6pm										
Block Island	0%	0%	0%	0%	0%	0%	5%	15%	10%	5%	0%	0%	0%	0%	5%	5%	15%		30%		45%		45%		35%		25%		25%		20%		20%	10%	5%		
Boston	0%	0%	0%	0%	0%	0%	0%	5%	5%	5%	5%	0%	0%	0%	5%	5%	10%		25%		45%		40%		30%		25%		25%		20%		20%	10%	5%		
Brockton	0%	0%	0%	0%	0%	0%	0%	5%	5%	5%	0%	0%	0%	0%	5%	5%	10%		25%		45%		45%		35%		25%		25%		25%	20%	10%	5%			
Gloucester	0%	0%	0%	0%	0%	0%	0%	5%	5%	5%	5%	0%	0%	0%	5%	5%	10%		25%		45%		45%		35%		25%		25%		25%	20%	10%	5%			
Greenfield	0%	0%	0%	0%	0%	0%	0%	5%	5%	5%	5%	0%	0%	0%	0%	5%		20%		35%		35%		30%		15%		15%		15%	10%	10%	5%	5%			
Hartford	0%	0%	0%	0%	0%	0%	5%	10%	10%	5%	0%	0%	0%	0%	0%	5%		20%		35%		35%		30%		15%		15%	15%	10%	10%	5%	5%				
Hyannis	0%	0%	0%	0%	0%	0%	0%	10%	10%	5%	0%	0%	0%	5%	5%	5%	10%		25%		50%		50%		45%		35%		40%		35%		30%		15%	10%	
Lowell	0%	0%	0%	0%	0%	0%	0%	5%	5%	5%	5%	0%	0%	0%	0%	5%	10%		25%		40%		40%		25%		20%		20%		20%	15%		5%	5%		
Nantucket	0%	0%	0%	0%	0%	0%	0%	10%	10%	10%	0%	0%	0%	5%	5%	5%	10%		25%		55%		55%		50%		40%		45%		45%		35%		20%	10%	
New Bedford	0%	0%	0%	0%	0%	0%	0%	10%	10%	5%	0%	0%	0%	0%	5%	5%	10%		25%		50%		45%		35%		25%		25%		25%		25%	20%	10%	5%	
Newport	0%	0%	0%	0%	0%	0%	0%	10%	10%	5%	0%	0%	0%	0%	5%	5%	10%		25%		45%		45%		30%		25%		25%		20%		20%	10%	5%		
Providence	0%	0%	0%	0%	0%	0%	0%	10%	5%	5%	0%	0%	0%	0%	5%	5%	10%		25%		45%		40%		30%		20%		20%		20%		20%	15%	10%	5%	
Provincetown	0%	0%	0%	0%	0%	0%	0%	5%	10%	5%	5%	0%	0%	5%	5%	5%	10%		25%		55%		55%		50%		40%		40%		40%		40%	30%		15%	10%
Springfield	0%	0%	0%	0%	0%	0%	0%	5%	5%	5%	0%	0%	0%	0%	0%	5%		20%		35%		35%		30%		15%		15%		15%	10%	10%	5%	5%			
Vineyard Haven	0%	0%	0%	0%	0%	0%	0%	10%	10%	5%	0%	0%	0%	0%	5%	5%	10%		25%		50%		50%		40%		35%		35%		30%		25%	15%	5%		
Worcester	0%	0%	0%	0%	0%	0%	0%	5%	5%	5%	0%	0%	0%	0%	0%	5%	15%		30%		40%		35%		20%		15%		15%		15%	10%	5%	5%			

Created: 7 am EST Mon 2/2/2026. Shows most impactful weather for the period beginning at the time shown. Weather symbols display where Probability of Precipitation ≥ 0%.

- Snow +

Created: 7 am EST Mon 2/2/2026 |





# 7 Day Precipitation Forecast

February 2, 2026

9:59 AM

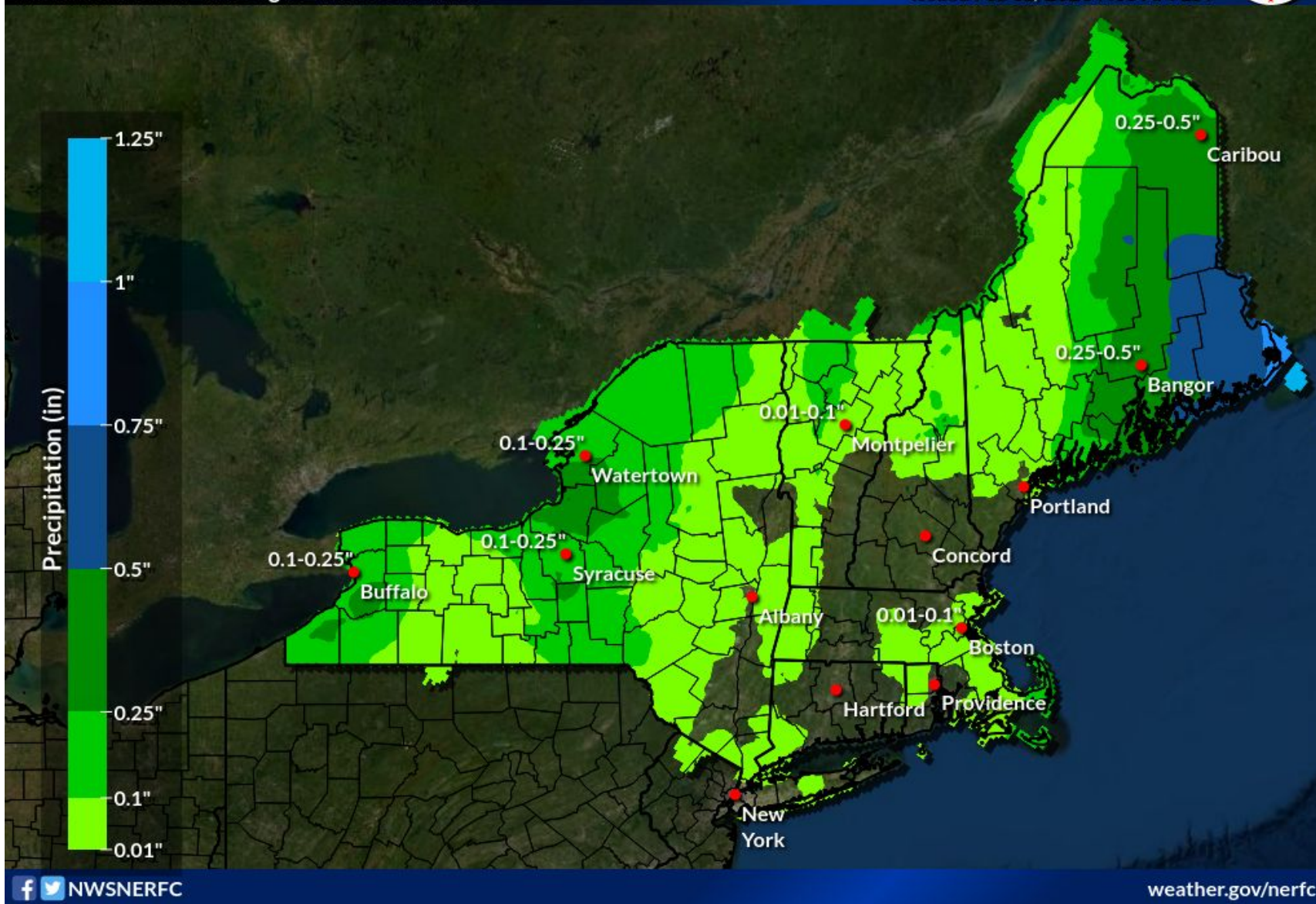
Any precipitation falls as snow.

## 7 Day WPC Precipitation Forecast

Valid Mon 7:00AM through Mon 7:00AM EST

River Forecast Center  
Northeast RFC

Issued Feb 02, 2026 7:05 AM EST



National Oceanic and  
Atmospheric Administration  
U.S. Department of Commerce

National Weather Service  
Boston / Norton, MA





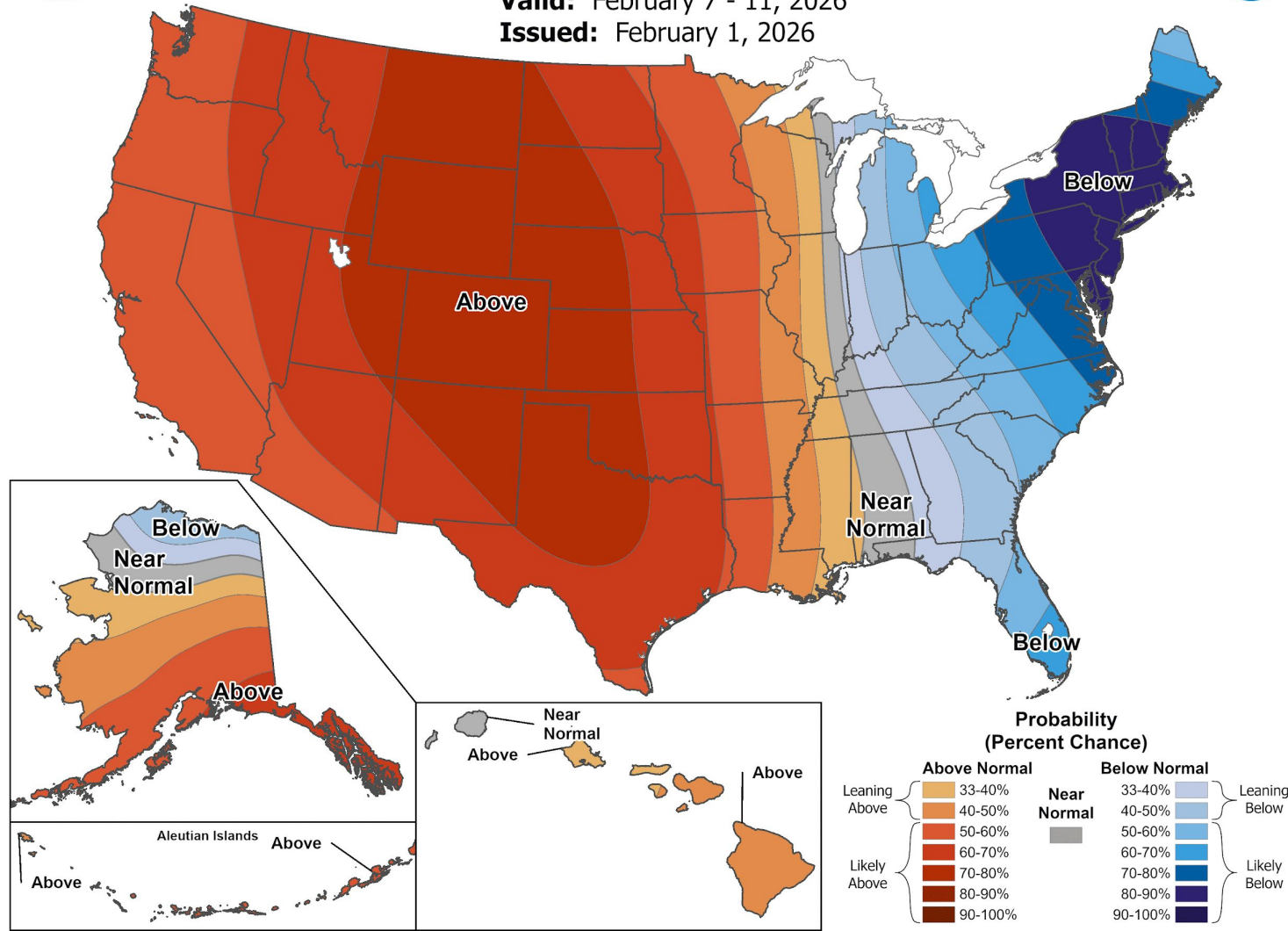
# 6-10 Day Outlook

February 2, 2026  
9:59 AM

Valid February 7-11, 2026

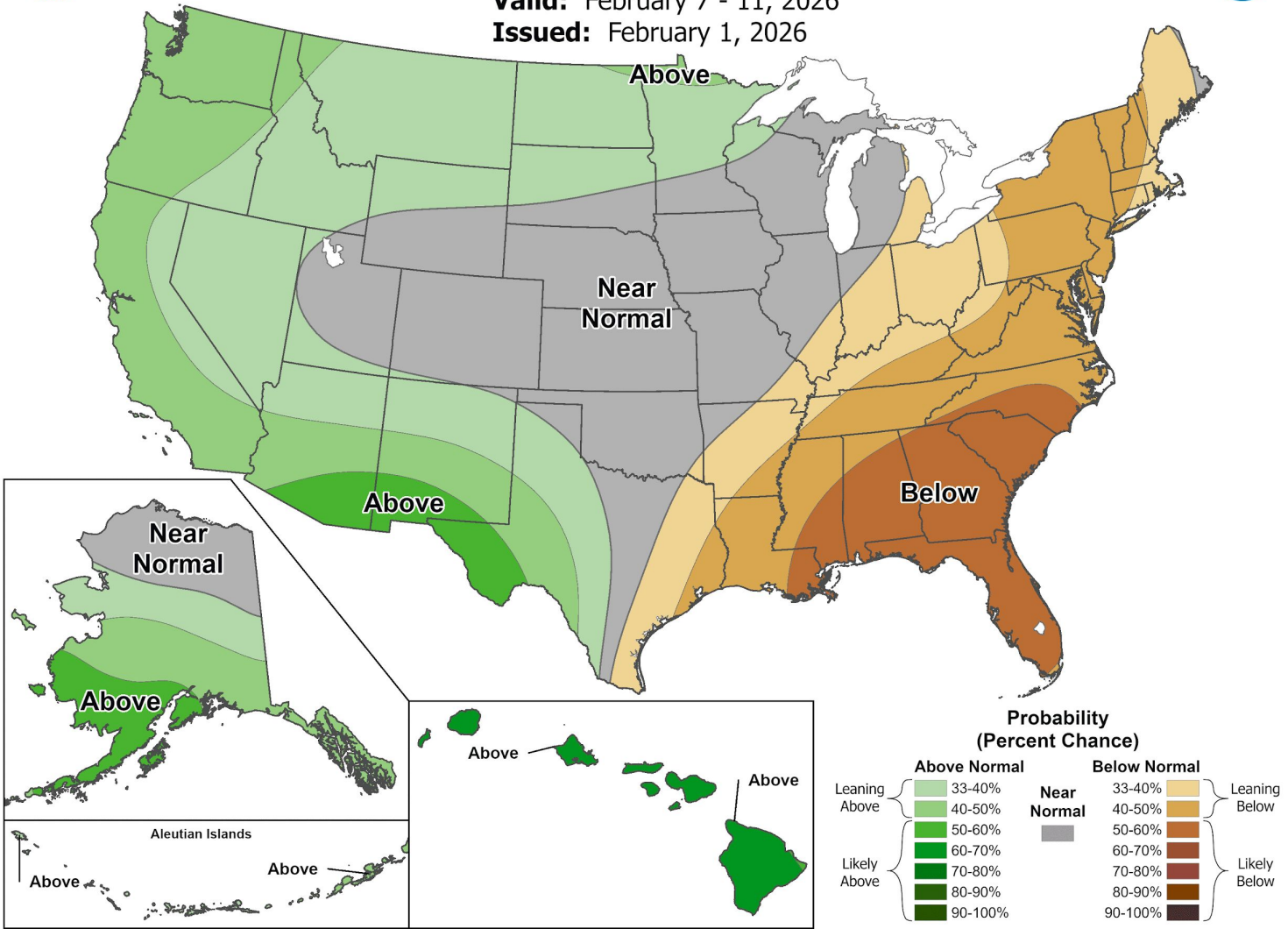
## 6-10 Day Temperature Outlook

Valid: February 7 - 11, 2026  
Issued: February 1, 2026



## 6-10 Day Precipitation Outlook

Valid: February 7 - 11, 2026  
Issued: February 1, 2026







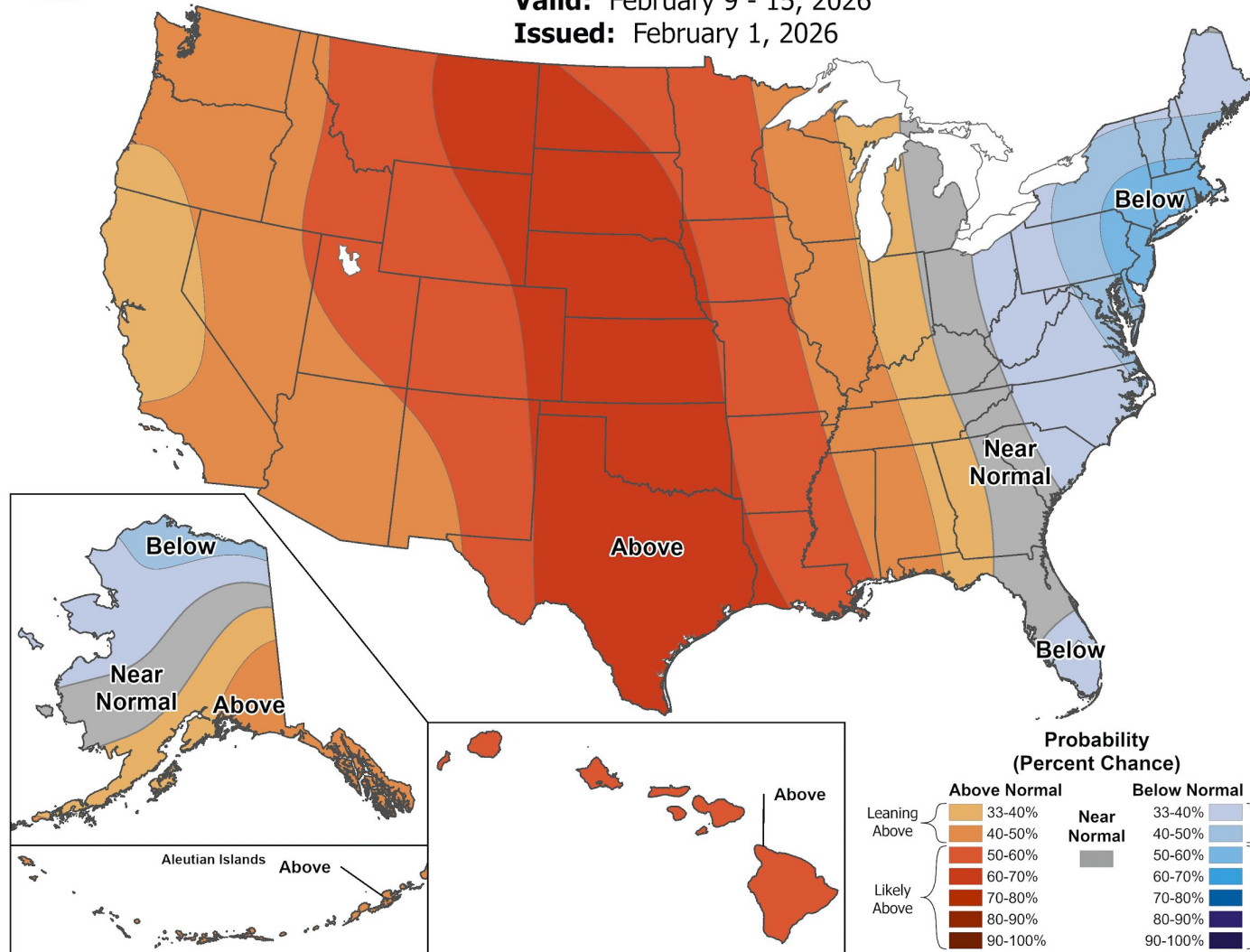
# 8-14 Day Outlook

February 2, 2026  
9:59 AM

Valid February 9-15, 2026

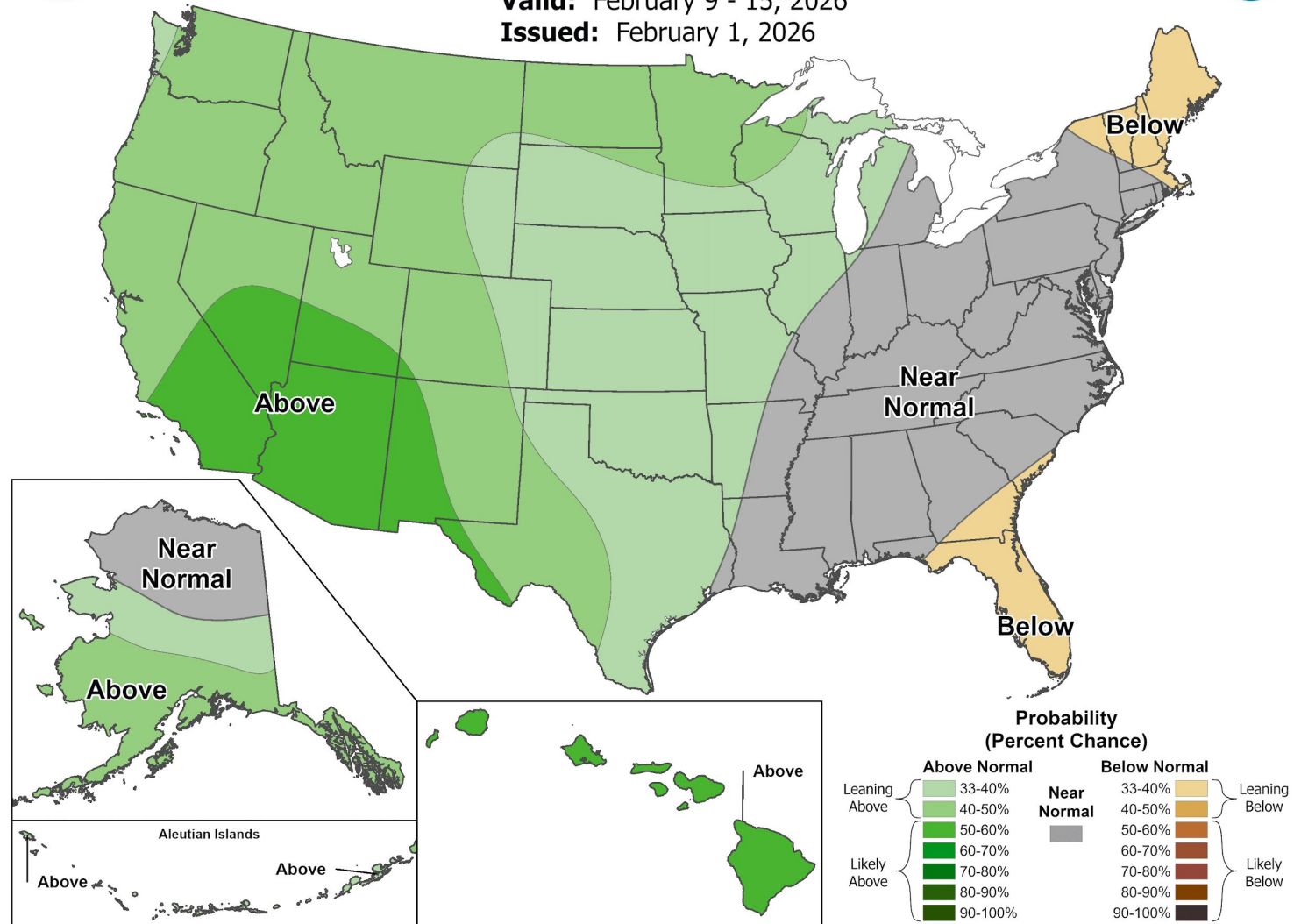
## 8-14 Day Temperature Outlook

Valid: February 9 - 15, 2026  
Issued: February 1, 2026



## 8-14 Day Precipitation Outlook

Valid: February 9 - 15, 2026  
Issued: February 1, 2026







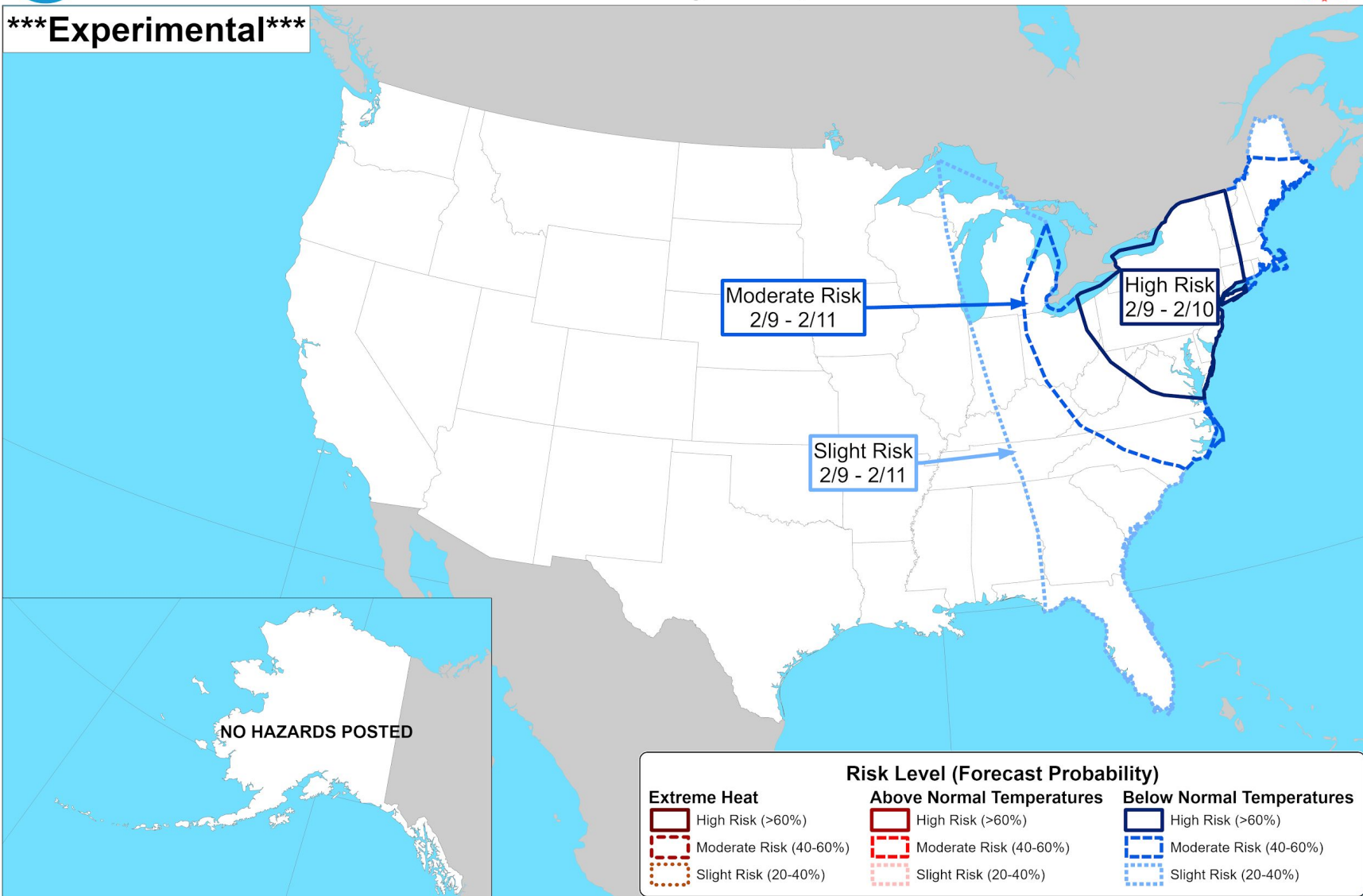
# Hazardous Cold Possible First Week of February

February 2, 2026  
9:59 AM

Valid February 9-15, 2026



## Risk of Hazardous Temperatures Valid: February 9 - 15, 2026



Climate Prediction Center  
Released: February 1, 2026 3:00 PM EST

Follow us:   
[www.cpc.ncep.noaa.gov](http://www.cpc.ncep.noaa.gov)



National Oceanic and  
Atmospheric Administration  
U.S. Department of Commerce

National Weather Service  
Boston / Norton, MA





## Key Messages:

- **Dry and “warmer” this week**
  - Highs in the upper 20s and mid 30s
- **Gusty winds and deep arctic air arrives this weekend**
  - Dangerous wind chills likely
  - Heavy freezing spray and Gale force winds likely
- **Minor snow accumulations (up to a few inches) possible from a weak storm Friday-Friday night**





# NWS Boston - Information Links

February 2, 2026  
9:59 AM

- [Graphical Hazardous Weather Outlook](#)
- [EM Briefing Page](#)
- [Coastal Flood Threat Display](#)
- [Tropical Weather](#)
- [Winter Weather](#)
- [Rivers / Tide Gauges \(National Water Prediction Service\)](#)



508-622-3280  
(unlisted 24/7)



National Oceanic and  
Atmospheric Administration  
U.S. Department of Commerce

**National Weather Service**  
**Boston / Norton, MA**